

RELIABILITY OF THIS GRAPHIC (as determined by standard practices)

PLOTTING ACCURACY	AREA	SCALE
Horizontal	1:100,000	1:100,000
Vertical	1:100,000	1:100,000

Horizontal Datum: World Geodetic System 84
Vertical Datum: Mean Sea Level
Transverse Mercator Projection

GLOSSARY

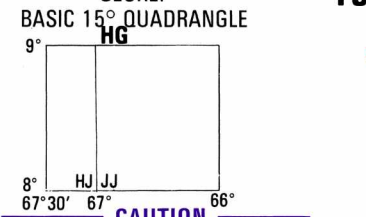
Agua	water
Calabozo	stream
Caño	stream
Carrión	stream
Estado	state
Estero	watercourse
Fundo	land
Hato	land
Laguna	lake
Medanos	dunes
Mesa	plateau
Montaña	mountain
Morichal	swamp
Paso	pass
Quebrada	creek
Quebrada	creek
Rio	river
Sabana	marsh
Terrero	land
Sujeto a inundación	inundation

LOCATION DIAGRAM

NC 19-11	NC 19-12	NC 20-9
NC 19-15	NC 19-16	NC 20-13
771	6-27	
NC 19-3	L-27	
828/827	NO 19-4	NO 20-1

CONVERSION OF ELEVATIONS

FEET	METERS	FEET	METERS
1000	305	10000	3048
900	274	9000	2743
800	244	8000	2438
700	213	7000	2133
600	183	6000	1828
500	152	5000	1523
400	122	4000	1218
300	91	3000	914
200	61	2000	610
150	46	1500	457
100	31	1000	305



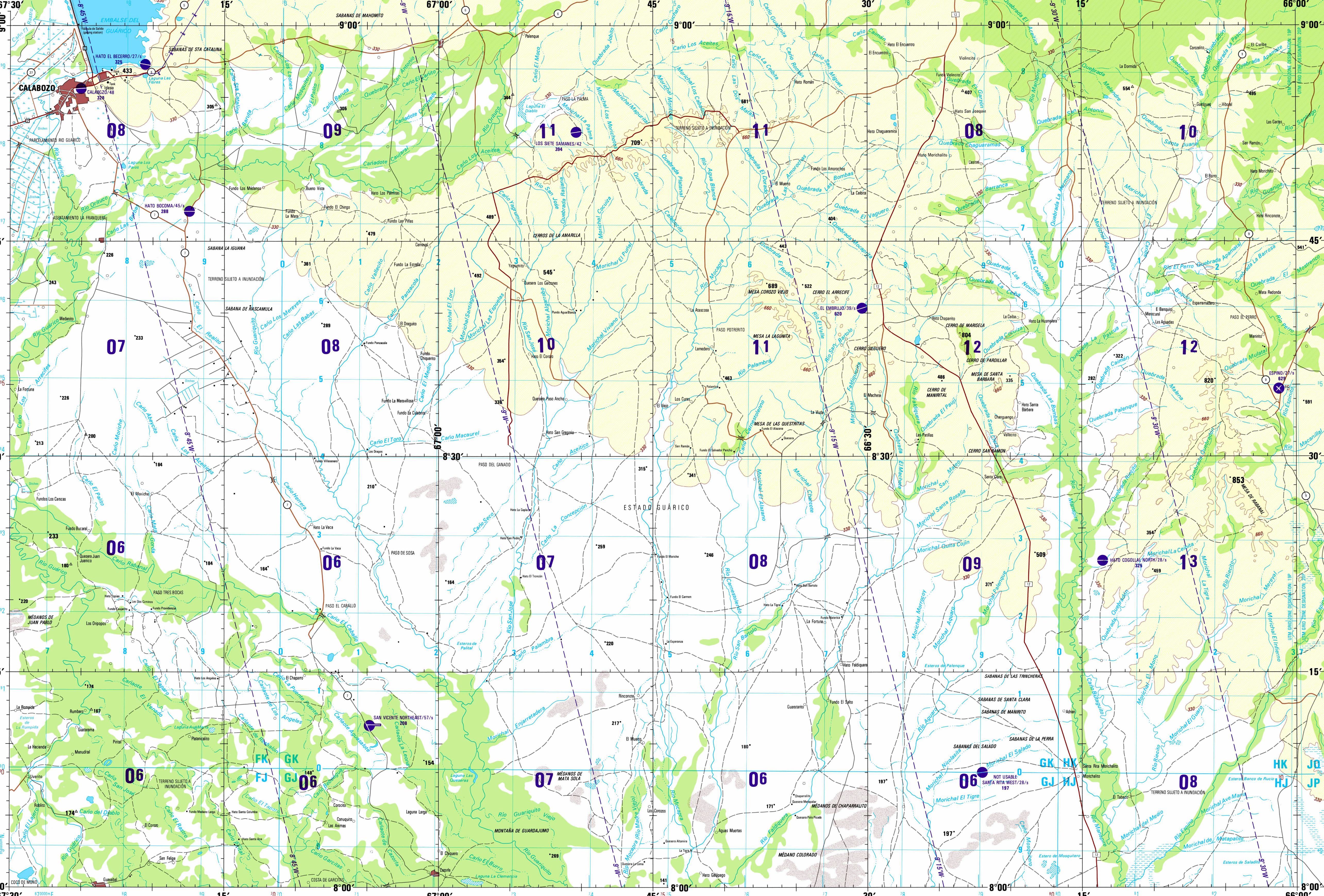
CAUTION
AIR INFORMATION CURRENT THROUGH 27 JANUARY 1992

CAUTION
LINES OF EQUAL MAGNETIC VARIATION FOR 1990

CAUTION
Vertical obstructions, including quasars, have been extracted from the most reliable sources available.

ATTENTION
THIS CHART CONTAINS MAXIMUM ELEVATION FIGURES (METERS)

SCALE 1:250,000 CALABOZO, VENEZUELA



Prepared and published by the DMA Aerospace Center, 3200 South Second Street, St. Louis, Missouri 63118-3399. Compiled February 1992.

DMA IS UPDATING THE MILITARY GRID SYSTEM USING ALL ADJACENT AND OVERLAPPING SHEETS AND CONVERTING THE NEW GRID VALUES ARE DERIVED IN BLUE AND THE OLD IN RED/BROWN

ROADS — CAMINOS

All weather, hard surface	Trasitable todo el año, superficie sólida	Two or more lanes wide	Una o más vías de ancho
One lane wide	Una vía de ancho	All weather, loose or light surface	Trasitable en tiempo bueno o ligero
Two or more lanes wide	Una o más vías de ancho	Fair or dry weather, loose surface	Trasitable en tiempo bueno o seco
Trail (hoop) or single track	Carril (hoop) o camino de herradura	Normal gauge (0.914m (3'))	0.914 metros — Vía ancha o normal
Narrow gauge	Vía angosta		

ROADS — CAMINOS

3 LANE 3 STRIP	3 LANE 3 STRIP
3 LANE 3 STRIP	3 LANE 3 STRIP
3 LANE 3 STRIP	3 LANE 3 STRIP

RAILROADS — FERROCARRILES

Single track	Multiple track
Line via	Line via

VEGETATION — VEGETACIÓN

Woods, Rice	Bosque, Arroz
Orchard-vineyard	Swamp
Huerto-viverde	Ciénaga

JOINT OPERATIONS GRAPHIC (AIR)

SCALE 1:250,000
EQUIDISTANCIA APROXIMADA DE LAS CURVAS DE NIVEL 330 PIES

CONTOUR INTERVAL APPROXIMATELY 330 FEET
EQUIDISTANCIA APROXIMADA DE LAS CURVAS DE NIVEL 330 PIES

COORDINATE CONVERSION FROM WGS-84 DATUM WGS-84 ELLIPSOID TO PSA DATUM INTERNATIONAL ELLIPSOID
GRID: AD41 201.92 m. E. AD4 363.34 m. N.
Geographic: Sábana 6° 1' Long. Ad4 17° 15' Lat.

USERS SHOULD REFER COMMENTS, ADDITIONS, AND COMMENTS TO THE NIMA OPERATIONAL HELP DESK: 1-800-855-8888; COMMERCIAL 314-260-4886; DOD 855-4886; OR WRITE TO DIRECTOR, NATIONAL MAGNETIC AND MAPPING AGENCY, ATTN: ES, MAIL STOP L-98, 4800 SANGAMORE ROAD, BETHESDA, MD 20815-5003.

AERODROMES (Military or Civil)
AERODROMES (Militares o civiles)

CONTROLLED AIRSPACE
ESPACIO AEREO CONTROLADO

RADIO FACILITIES
INSTALACIONES DE RADIO

RADIO AIDS TO NAVIGATION
RADIOAYUDAS A LA NAVEGACION

ATLANTIC ADIZ
ADIZ (ZONA DE IDENTIFICACION DE DEFENSA AEREA)

RADIO AIDS TO NAVIGATION
RADIOAYUDAS A LA NAVEGACION

VEGETATION
VEGETACION

VISUAL AIDS AND OBSTRUCTIONS
OBSTACULOS Y AYUDAS VISUALES

TERRAIN ELEVATIONS
ELEVACIONES DEL TERRENO

HIGHEST KNOWN ELEVATION
ELEVACION MAS ALTA CONOCIDA

NOTES — NOTAS
No obstructions 200 feet or more above ground level are known to exist in this area.

THE REPRESENTATION OF BOUNDARIES IS NOT NECESSARILY AUTHORITATIVE.
LA REPRESENTACION DE LIMITES NO DEBE CONSIDERARSE OFICIAL.