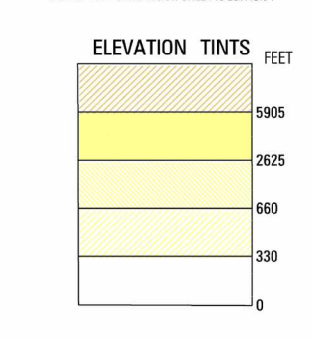


SERIES 1501 AIR SHEET NC 18-15 EDITION 2



RELIABILITY OF THIS GRAPHIC (as determined by standard practices) PLOTTING ACCURACY 90% ASSURANCE

Horizontal Datum: WGS 84 Vertical Datum: Mean Sea Level Transverse Mercator Projection

GLOSSARY table with Spanish and English terms for geographical features like 'Abandono', 'Academia', 'Aerodromo', etc.

LOCATION DIAGRAM table showing grid coordinates and sheet numbers.

CONVERSION OF ELEVATIONS table with columns for Feet and Meters.

GEOREF BASIC 15' QUADRANGLE HG table with grid coordinates.

CAUTION AIR INFORMATION CURRENT THROUGH 7 APRIL 1992

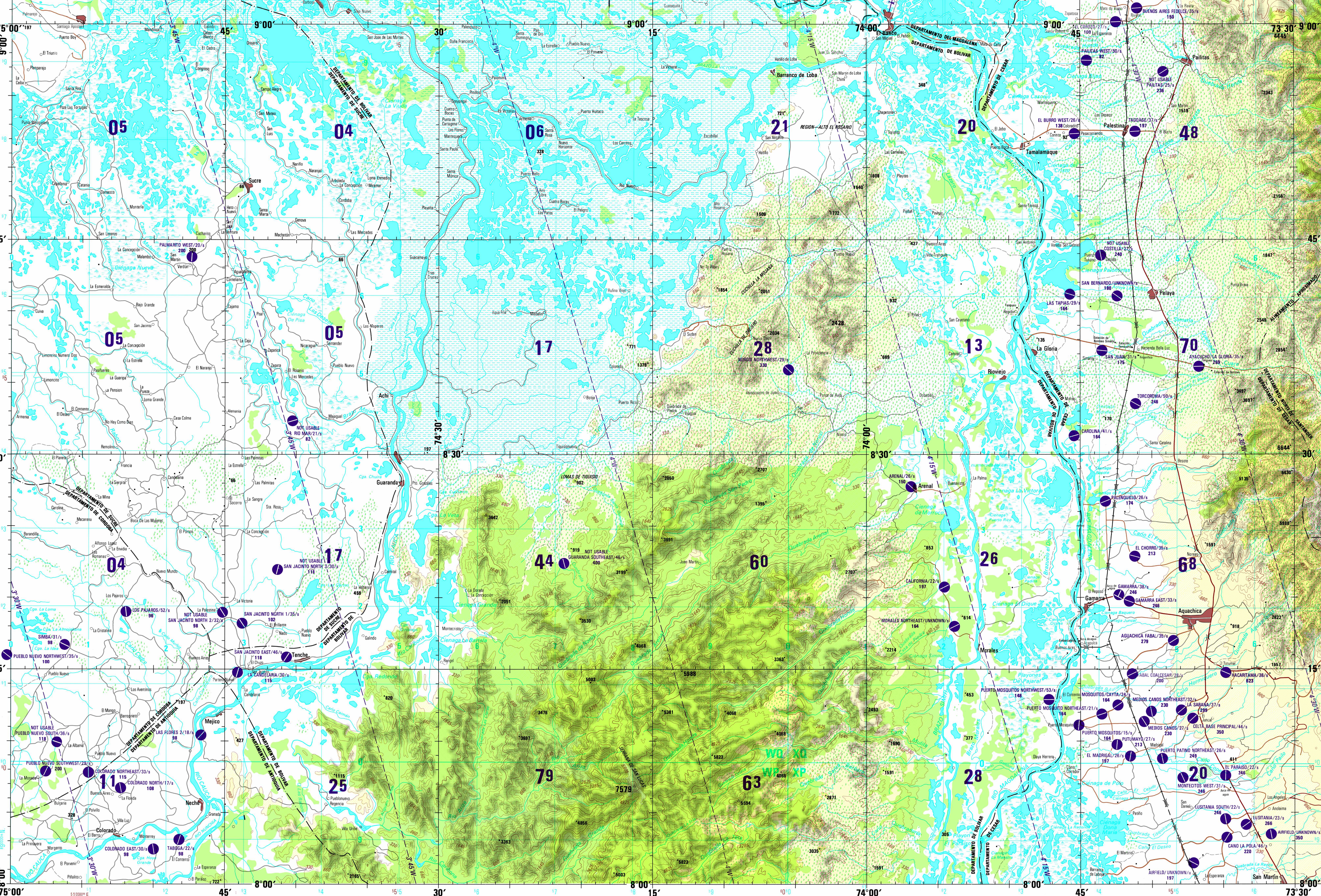
CAUTION Vertical obstructions, including powerlines, have been extracted from the most reliable sources available.

ATTENTION THIS CHART CONTAINS MAXIMUM ELEVATION FIGURES (MEF)

Prepared and published by the Defense Mapping Agency Aerospace Center, St. Louis, Missouri. Compiled April 1992.

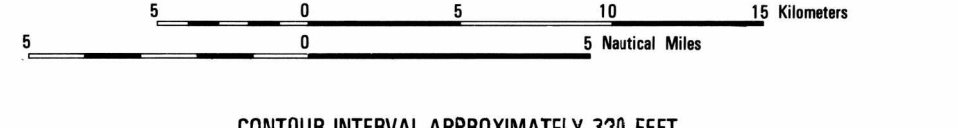
SCALE 1:250,000 AGUACHICA, COLOMBIA

SERIES 1501 AIR SHEET NC 18-15 EDITION 2



JOINT OPERATIONS GRAPHIC (AIR)

SCALE 1:250,000



CONTOUR INTERVAL APPROXIMATELY 330 FEET EQUIDISTANCIA APROXIMADA DE LAS CURVAS DE NIVEL 330 PIES

COORDINATE CONVERSION FROM WGS 84 DATUM TO BOGOTA DATUM INTERNATIONAL ELLIPSOID

USERS SHOULD REFER CORRECTIONS, ADDITIONS, AND COMMENTS TO THE NIMA OPERATIONAL HELP DESK

USERS SHOULD REFER CORRECTIONS, ADDITIONS, AND COMMENTS TO THE NIMA OPERATIONAL HELP DESK

AERODROMES (Military or Civil) AERODROMES (Militares o civiles) Runway pattern known EDNA/50/s 725

CONTROLLED AIRSPACE ESPACIO AEREO CONTROLADO ATLANTIC ADIZ ADIZ (ZONA DE IDENTIFICACION DE DEFENSA AEREA)

RADIO FACILITIES INSTALACIONES DE RADIO RADIO RANGE LF/MF RADIO RANGEO LF/MF MULTIPLE RADIO FACILITIES INSTALACIONES MULTIPLES

RADIO AIDS TO NAVIGATION RADIOAYUDAS A LA NAVEGACION VHF OMNI RANGE (VOR) RADIOAEREO OMNIDIRECCIONAL VOR WITH DME VOR Y DME INSTALACIONES CONJUNTAMENTE

ROADS - CAMINOS All weather, hard surface Pavimentado todo el año superficie solida Two or more lanes wide Dos o más vías de ancho

RAILROADS - FERROCARRILES Normal gauge 0.914m (3') 0.914 metros - Vía ancha o normal Narrow gauge Vía angosta

BOUNDARIES - LIMITES International International Frontera administrativa de primer orden

VEGETATION - VEGETACION Woods: Scattered trees Bosque: Árboles Esparcidos Orchard-vineyard: Swamp Huerta-villado: Ciénaga

OBSTACLES AND OBSTRUCTIONS OBSTACULOS Y AYUDAS VISUALES Obstruction Obstrucción 1000 1000 - Elevation of obstruction top, above sea level

TERRAIN ELEVATIONS ELEVACIONES DEL TERRENO Spot elevation, Normal, Critical Puntal elevación, Normal, Crítica 770 1910

HIGHEST KNOWN ELEVATION IS 7579 feet at the following coordinates: Geographic: 8°07'N, 74°17'W Grid: W9P780

NSN 7641014102862 NIMA Ref No 1501ANC1815