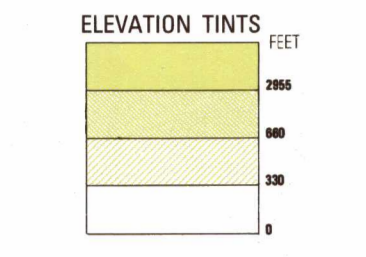
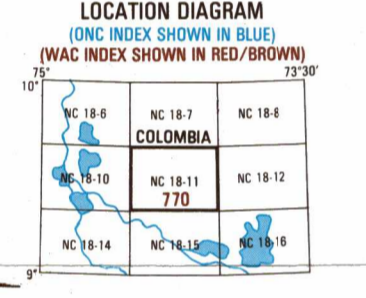


SERIES 1501 AIR SHEET NC 18-11 EDITION 2

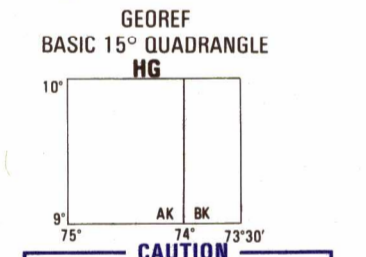


RELIABILITY OF THIS GRAPHIC (as determined by standard practices)
Plotting Accuracy 90% Assurance
Horizontal: within 425 ft.
Contours: within 165 ft.
Date of information: 1990
Graphic Feature: Date of information: 1990

Glossary table listing symbols for various features like stream, canal, road, and railway.



Conversion of Elevations table with columns for Feet and Meters.

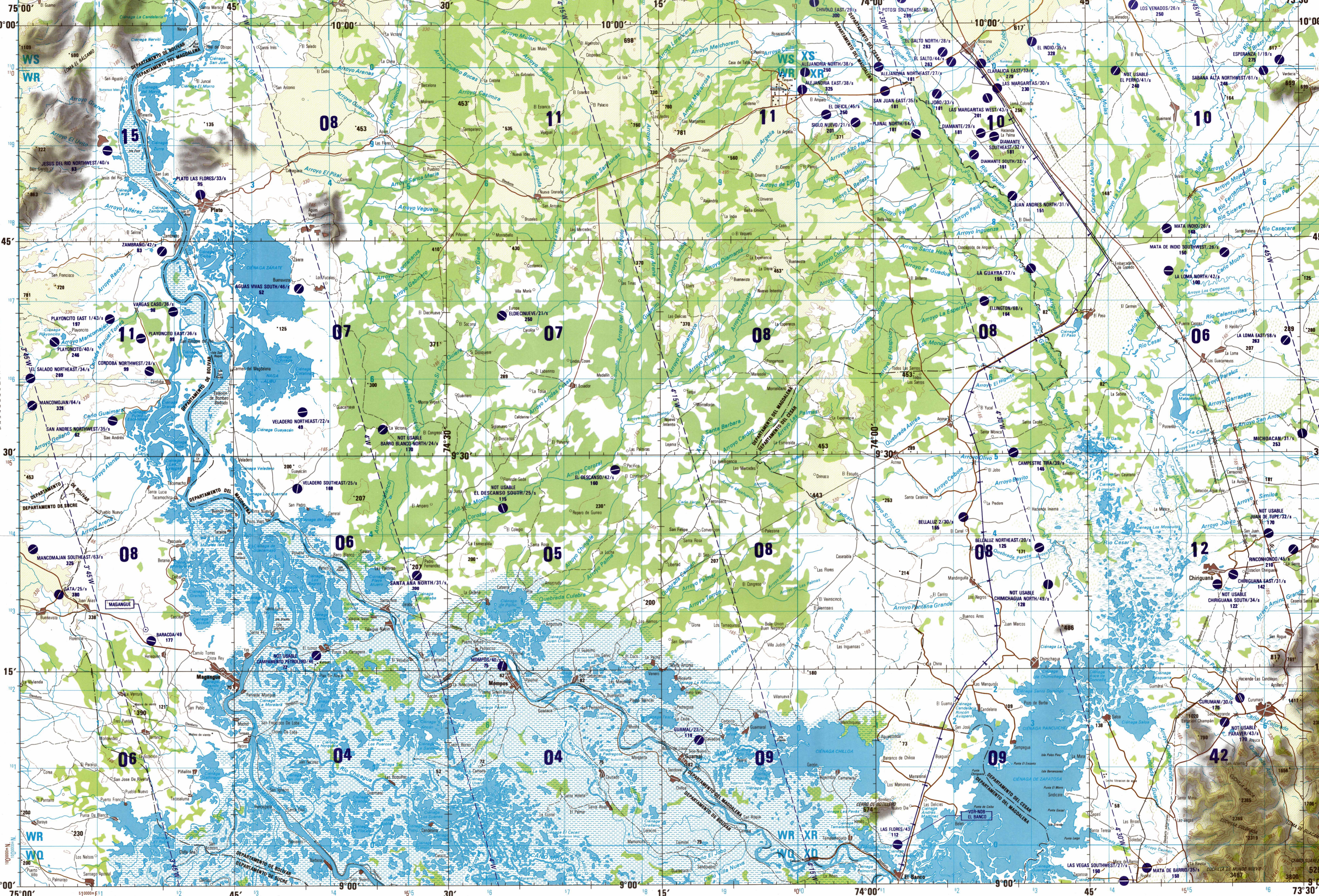


CAUTION: AIR INFORMATION CURRENT THROUGH 23 MAY 1992. Consult NOTAMS and Flight Information Publications for current NOTAMS and Flight Information.

CAUTION: Vertical obstructions, including powerlines, have been represented by the 'V' symbol. Obstructions are shown only if they are 200 feet or more above ground level.

ATTENTION: THIS CHART CONTAINS MAXIMUM ELEVATION FIGURES (MEF). The Maximum Elevation Figure shows in quadrangles the highest terrain elevation in feet above mean sea level. The MEF is based on information available at the time of publication.

Scale 1:250,000, MAGANGUE, COLOMBIA. Includes series information and a small inset map.



JOINT OPERATIONS GRAPHIC (AIR)

SCALE 1:250,000



CONTOUR INTERVAL APPROXIMATELY 330 FEET WITH SUPPLEMENTARY CONTOURS AT APPROXIMATELY 165 FEET. EQUIDISTANCIA APROXIMADA DE LAS CURVAS DE NIVEL 330 PIES CON CURVAS SUPLEMENTARIAS A INTERVALOS DE 165 PIES

COORDINATE CONVERSION FROM WGS-84 DATUM TO PROVISIONAL SOUTH AMERICAN DATUM INTERNATIONAL ELLIPSOID. Grid: Add 228m E, Add 388m N, Geographic: Subtract 7.4" Long, Add 11.8" Lat.

USERS SHOULD REFER TO THE MIA OPERATIONAL HELP DESK: 1-800-456-0889. COMMERCIAL: 314-263-4864. 24 HOURS: 610-464-4604. 24 HOURS: 610-464-4604. 24 HOURS: 610-464-4604.

Aerodromes (Military or Civil) section with symbols and descriptions for runway patterns, EDNA names, and runway patterns.

Controlled Airspace section with symbols for ADIZ, radio facilities, and radio aids to navigation.

Visual Aids and Obstructions section with symbols for obstruction, power transmission lines, and terrain elevations.

Notes section containing additional information, cautions, and contact details for the National Imagery and Mapping Agency.