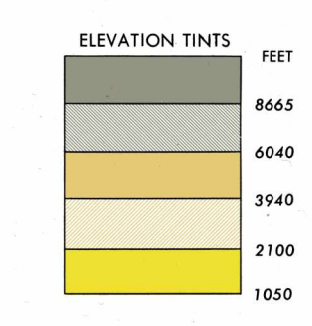
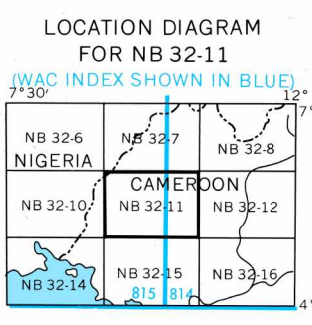


1:250,000 - EDITION 1
DSCHANG, CAMEROON
1501A NB 32-11
CAMEROON AND NIGERIA



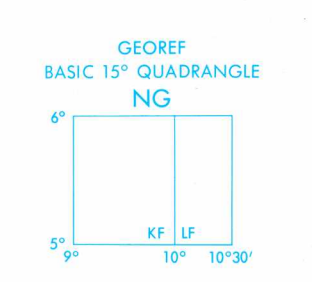
RELIABILITY OF THIS MAP

Area A	Area B	Area C
Accuracy as related to control of map	within 1:50,000	within 1:100,000
Horizontal distance - independent Automatic Control	Vertical distance - Mean Sea Level	Horizontal distance - independent Automatic Control
Vertical distance - Mean Sea Level	Horizontal distance - independent Automatic Control	Vertical distance - Mean Sea Level



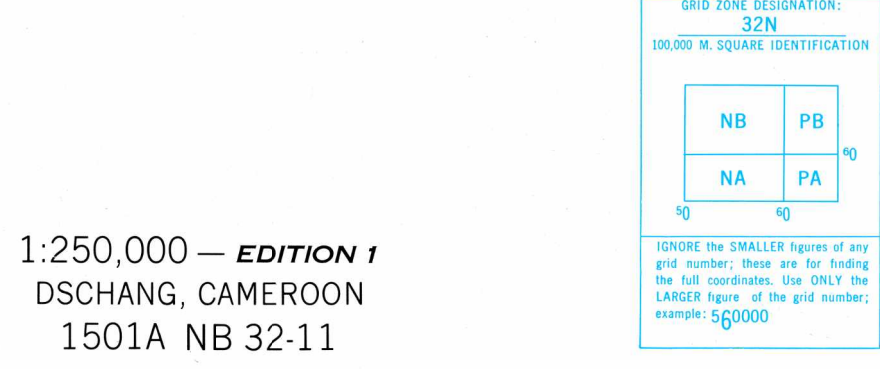
GLOSSARY

Chutes	waterfall
Col	mountain pass
Dent	peak
Dongol	hill, mountain
Hopital	hospital
Lac	lake
Marais	marshland, swamp
Massif	mountain block
Monts	mountains
Pic	mountain peak
Plaine	plain, flat country
Reserve forestiere	forest reserve
Riviere	river

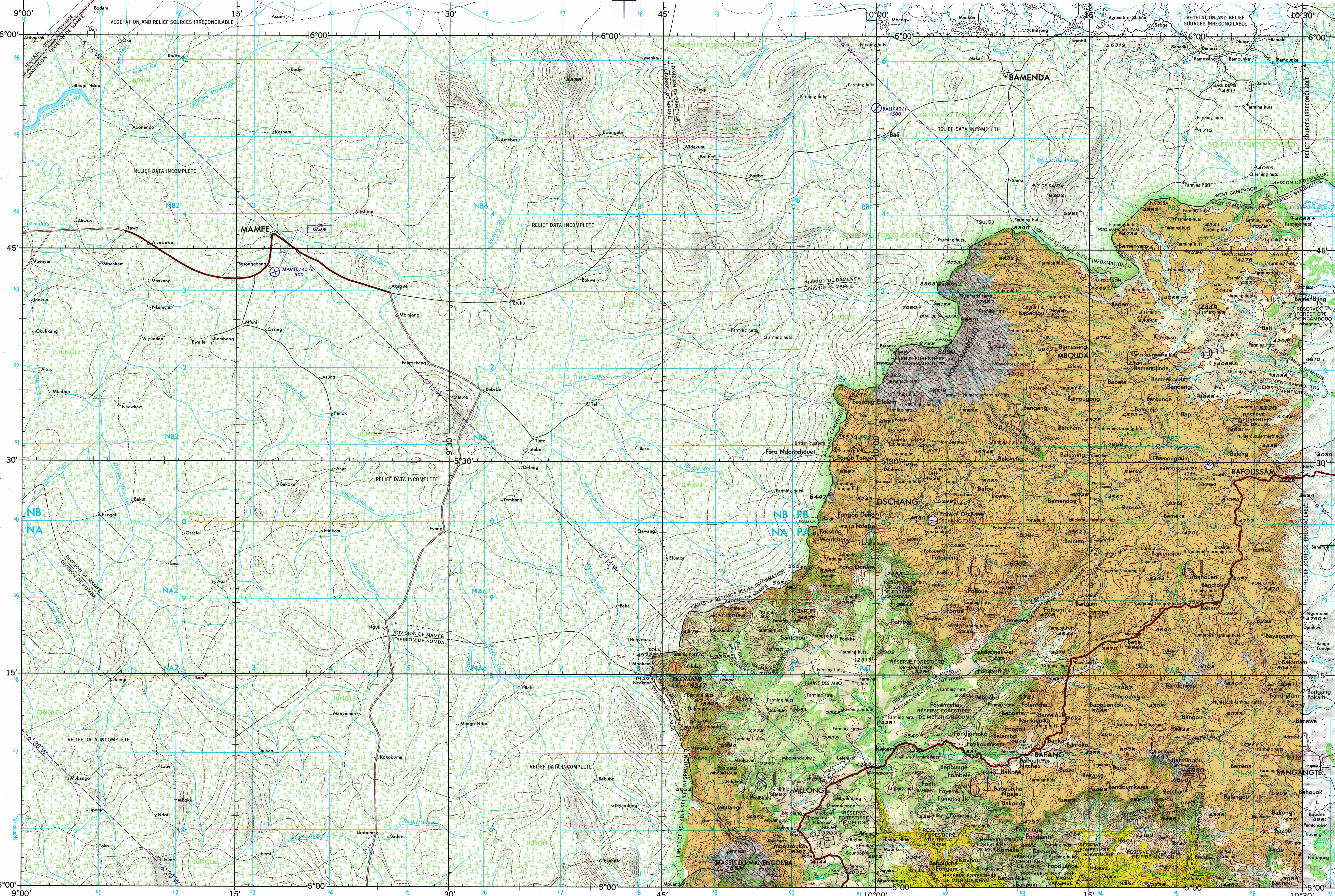


CAUTION
AIR INFORMATION CURRENT THROUGH 14 APRIL 1967
Consult NOTAMS and USAF/USN Flight Information Publications for the latest air information from the Chart Updating Manual for other chart revision information.

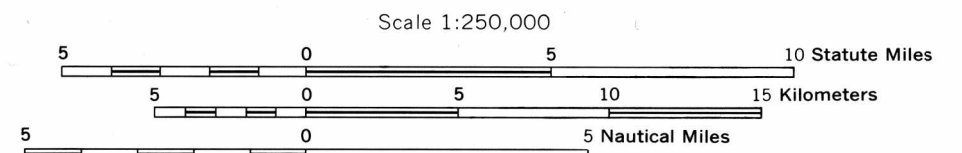
Prepared under the direction of the Defense Intelligence Agency and published by Army Map Service, Corps of Engineers, U.S. Army, Washington, D.C. Compiled in 1966 from best available source materials.



1:250,000 - EDITION 1
DSCHANG, CAMEROON
1501A NB 32-11



JOINT OPERATIONS GRAPHIC (AIR)



CONTOUR INTERVAL APPROXIMATELY 265 FEET (80 METERS) WITH SUPPLEMENTARY CONTOURS AT APPROXIMATELY 135 FOOT (40 METER) INTERVALS; RELIEF PARTIALLY SHOWN BY FORM LINES

TRANSVERSE MERCATOR PROJECTION

GRID ZONE DESIGNATION: 32N

TO GIVE A STANDARD REFERENCE ON THIS SHEET TO NEAREST 100 METERS

SAMPLE POINT: NOUND

Grid Zone Designation	Sample Point
NB 32N 150000	150000
PB 32N 150000	150000
NA 32N 150000	150000
PA 32N 150000	150000

LEGEND

ROADS	All weather	Hard surface, two or more lanes wide	Loose or light surface, two or more lanes wide	Hard surface, one lane wide	Loose or light surface, one lane wide	Fair or dry weather, loose surface	Cart track, Footpath, trail	
RAILROADS	Normal gauge 1 m (3'3 3/8")	Narrow gauge	Interterritorial	Primary administrative	Reservation	Woods-brushwood	Scattered trees, low growth	Orchard, plantation, vineyard

AERODROMES (Military or Civil)

EDNA-50's/735

Field limits with runway pattern	EDNA-Name	50-Length of longest runway to nearest hundreds of feet	5-Soft or unpaved surface	725-Elevation
Field limits, with runway pattern unknown	Field limits unknown, with runway pattern	SEAPLANE BASE	SEAPLANE (EMERGENCY)	HELIPORT
RADIO FACILITIES	RADIO RANGE LF/MF	MULTIPLE RADIO FACILITIES	CONTROLLED AIRSPACE	ATLANTIC ADIZ

VISUAL AIDS AND OBSTRUCTIONS

Obstruction	1108 (259)
Group obstruction	
Radio facility obstruction	
Power transmission line	
Ocean station vessel (Normal position)	
Visual ground sign	
Aero light Marine light	
TERRAIN ELEVATIONS	HIGHEST ELEVATION IS UNKNOWN

HIGHEST TERRAIN ELEVATIONS FOR EACH 15 MINUTE QUADRANGLE are represented in THOUSANDS and HUNDREDS of feet. They are omitted where relief information is inadequate. A minus sign (-) following the figure indicates that the figure is based on an estimated elevation.

EXAMPLES: 51 81-

NOTES: No obstructions 200 feet or more above the ground level are known to exist within this area.

THE REPRESENTATION OF INTERNATIONAL BOUNDARIES IS NOT NECESSARILY AUTHORITY.

WQ 7-67 PRINTED BY ARMY MAP SERVICE, CORPS OF ENGINEERS