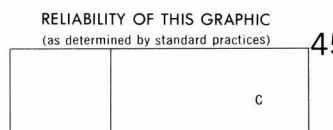
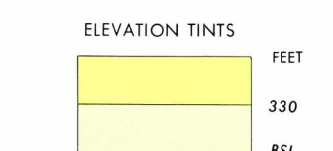


SERIES 1501 AIR SHEET NB 32-10 EDITION 2



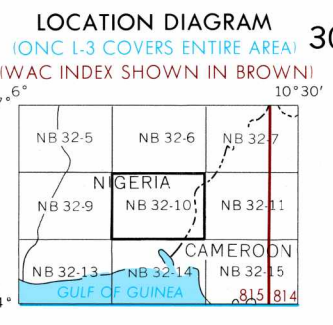
Accuracy, as related to control of graphic:

Horizontal positions	within 1:100,000	within 1:100,000	within 1:100,000
Contours	82 ft. (25 m)	164 ft. (50 m)	328 ft. (100 m)

Latest date of graphic information:

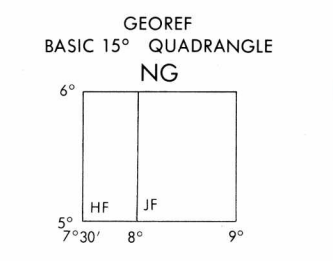
Sheet classification	256-63 1952-63	1953-63	1954-63
Vertical datum	1954-63 1955-56	1957-58	1959-60
All other features	1954-63 1955-56	1957-58	1959-60

Horizontal Datum: Local Datum
Vertical Datum: Mean Sea Level
Transverse Mercator Projection



CONVERSION OF ELEVATIONS

FEET	METERS	FEET	METERS
1000	305	10000	3048
900	274	9000	2743
800	244	8000	2438
700	213	7000	2133
600	183	6000	1829
500	152	5000	1524
400	122	4000	1219
300	91	3000	914
200	61	2000	610
100	31	1000	305

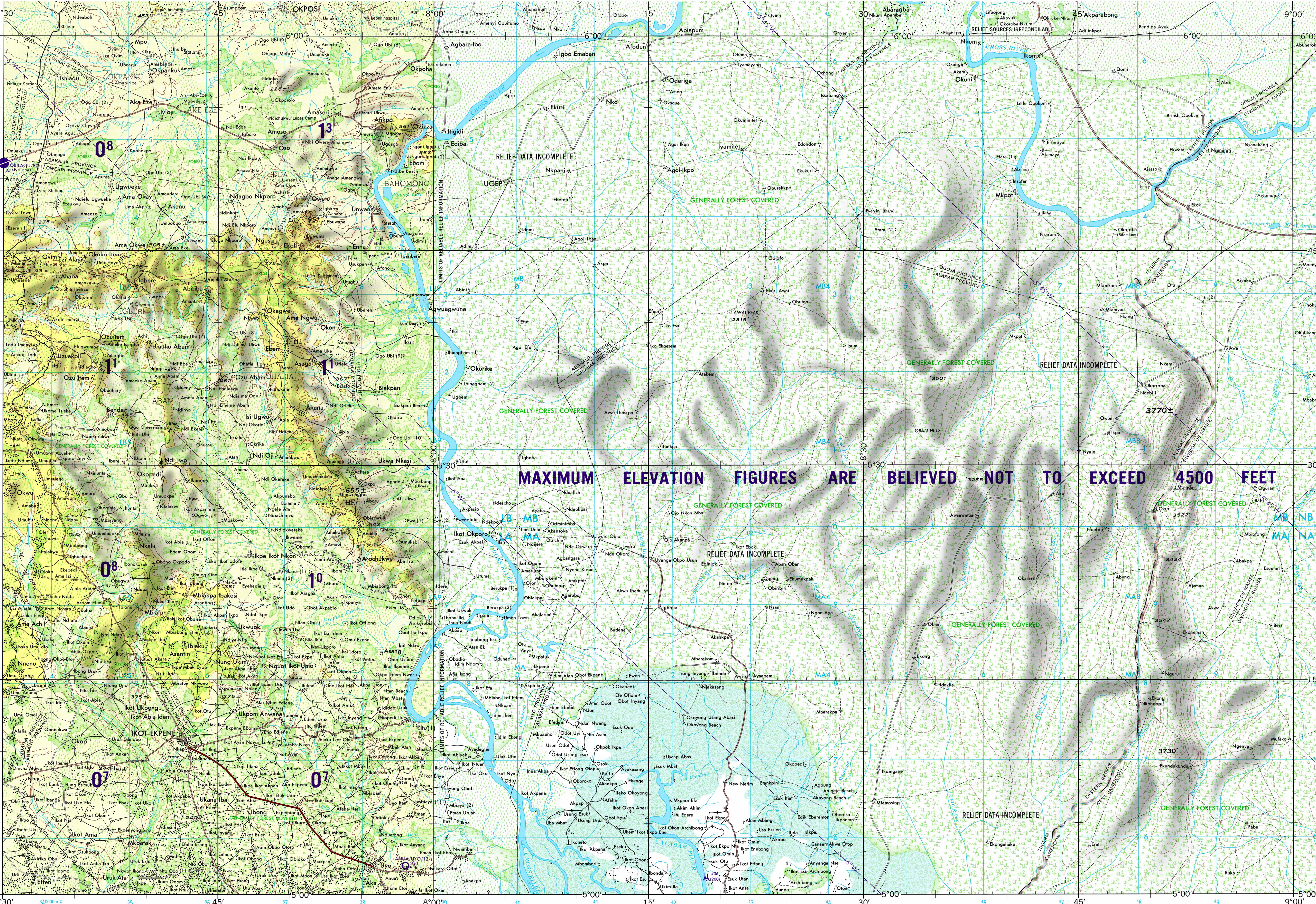


CAUTION
AIR INFORMATION CURRENT THROUGH 30 SEPTEMBER 1975
Consult NOTAMS and Aeronautical Information Publications for the latest air information, the DOD Aeronautical Chart Lighting Manual or AICD, or Aeronautical Chart Amendment document, for other chart revision information.

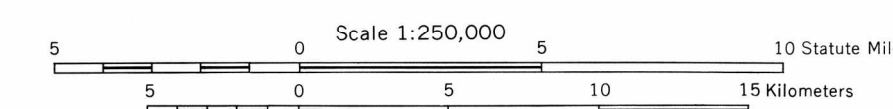
INES OF EQUAL MAGNETIC VARIATION FOR 1975
(Annual rate of change 5' decrease)

SCALE 1:250,000
IKOT EKPE, NIGERA,
CAMEROON

SERIES 1501 AIR SHEET NB 32-10 EDITION 2



JOINT OPERATIONS GRAPHIC (AIR)



CONTOUR INTERVAL APPROXIMATELY 165 FEET WITH SUPPLEMENTARY CONTOURS AT 85 FEET; RELIEF PARTIALLY SHOWN BY FORM LINES.

ROADS

- All weather, hard surface
- Two or more lanes wide
- Less than two lanes wide
- All weather, loose or light surface
- Two or more lanes wide
- Less than two lanes wide
- Fair or dry weather, loose surface
- Cart track
- Footpath (trail)

RAILROADS

- Narrow gauge 1.067m. (3'6")
- Narrow gauge
- Station

BOUNDARIES

- International
- Major administrative
- Primary administrative
- Reservation

VEGETATION

- Woods/scrubland
- Scattered trees, low growth
- Orchards, plantations, vineyards
- Land subject to inundation

AERODROMES (Military or Civil)

- Field limits with runway pattern
- EDNA - Name
- 50 - Length of longest runway to nearest hundreds of feet
- 5 - Soft or unimproved surface
- U - Unknown surface
- 725 - Elevation
- Field limits with runway pattern unknown

HELIPORT

RADIO AIDS TO NAVIGATION

- VORTAC
- TACAN

VOR with DME

Other facilities

CONTROLLED AIRSPACE

ATLANTIC ADIZ

VISUAL AIDS AND OBSTRUCTIONS

- ADIZ
- Obstruction
- 1108 - Elevation of obstruction top, above sea level.
- (259) - Elevation of obstruction top, above ground level.
- Group obstruction
- Radio facility obstruction
- Power transmission line

TERRAIN ELEVATIONS

- HIGHEST KNOWN elevation is 3770± feet at 5°33'N 8°19'E
- Spot elevation: Normal Critical
- Horizontal control point
- ± following elevation value indicates accuracy is not within 85 feet

ATTENTION
THIS CHART CONTAINS MAXIMUM ELEVATION FIGURES (MEF)
The Maximum Elevation Figures shown in quadrangles bounded by ticked lines of latitude and longitude are represented in THOUSANDS and HUNDREDS of feet above mean sea level. The MEF is based on information available concerning the highest known feature in each quadrangle, including terrain and obstructions (trees, towers, antennas, etc.). In areas of extensive unreliable relief, the MEF is shown by a note spread across the area.
Example: 12,500 feet..... **125**

NOTES
Only obstructions 200 feet or more above ground level are shown. The information on obstructions is not necessarily complete. THIS GRAPHIC IS NOT AN AUTHORITY ON INTERNATIONAL BOUNDARIES. THE ALIGNMENT OF ALL BOUNDARIES IS APPROXIMATE.

GRID ZONE DESIGNATION: 32N

TO GIVE A STANDARD REFERENCE ON THIS SHEET TO NEAREST 100 METERS

LB	MB	MA
LA	MA	

IGNORE THE SMALLER FIGURES of any grid number; these are for finding the full coordinates. Use ONLY the LARGER figure of the grid number; example: 50,000

SAMPLE REFERENCE: MA3090

Grid Zone Designation: 32NMA1999

BLUE NUMBERED LINES INDICATE THE 10,000 METER UNIVERSAL TRANSVERSE MERCATOR GRID ZONE 32, CLARKE 1880 SPHEROID.

USERS SHOULD REFER CORRECTIONS, ADDITIONS, AND COMMENTS TO THE NIMA CUSTOMER HELP DESK: 1-800-455-0888, COMMERCIAL: 304-285-5822, 24H-48H-6022, OR WRITE TO DIRECTOR, NATIONAL MAPS AND SHIPPING AGENCY, ATTN: CDD, MAIL STOP P-37, 4600 BANGS ROAD, BETHESDA, MD 20816-0033

NSN 764101410171
NIMA REF. NO. 1501ANB3210