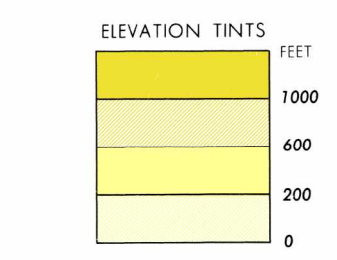


SERIES 1501 AIR SHEET NB 32-5 EDITION 2



RELIABILITY OF THIS SHEET (as determined by standard practices)

PLOTTING ACCURACY 50% ASSURANCE

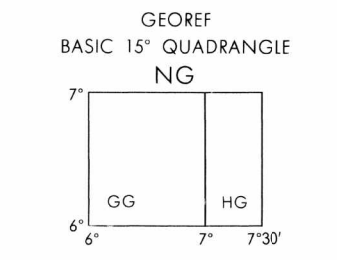
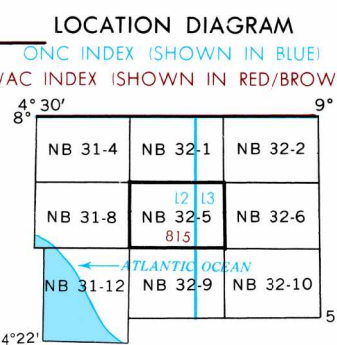
Horizontal: within 410 ft Contour: within 80 ft

MAP FEATURE, DATE OF INFORMATION

Man-made features	1967
Hydrography	1961
Vegetation	1961
Contours	1962
Road classification	1969
Air information	1973

Major motorable roads in Nigeria are classified from reconnaissance. All other roads are classified from source maps. Map not field checked.

Horizontal Datum: Nigeria  
Vertical Datum: Mean Sea Level  
Transverse Mercator Projection

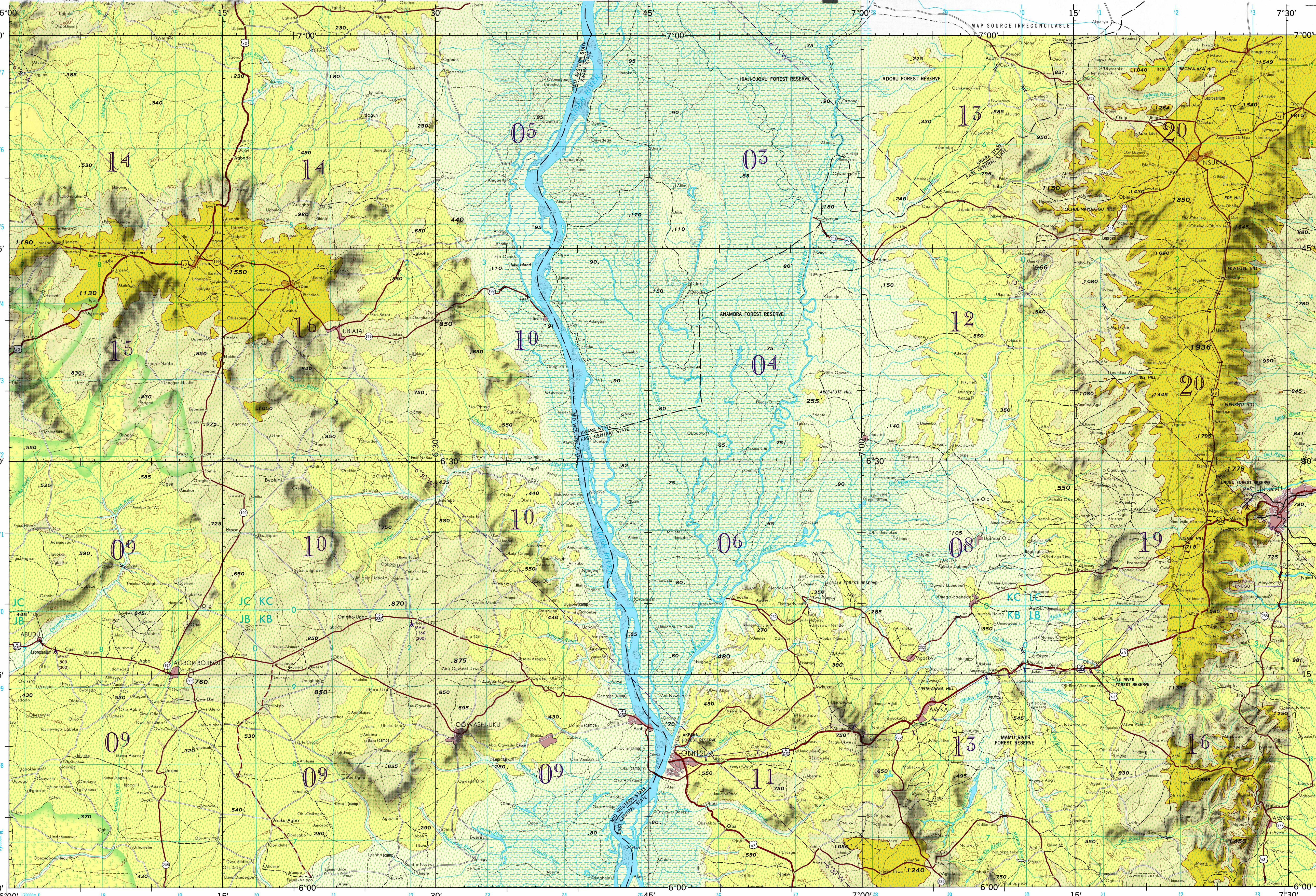


CAUTION

AIR INFORMATION CURRENT THROUGH 18 APRIL 1973

Consult Notices to Airmen (NOTAMS) and Flight Information Publications (FIPs) for the latest air information; the Chart Updating Manual (CHUM) for other chart revision information.

INES OF EQUAL MAGNETIC VARIATION FOR 1970 (Annual rate of change 5' decrease)



Prepared and published by the Defense Mapping Agency Topographic Center, Washington, D. C. Compiled 1972.

ELEVATIONS IN FEET

# JOINT OPERATIONS GRAPHIC (AIR)

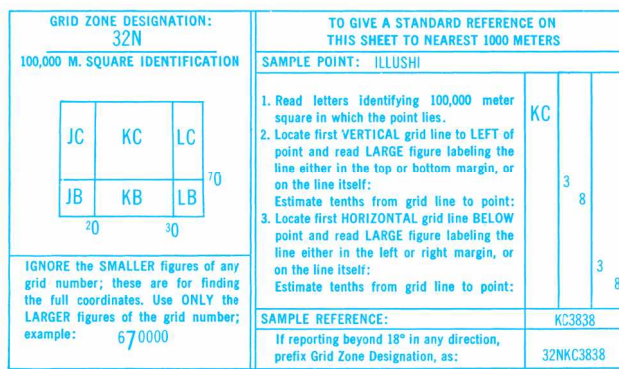
ELEVATIONS IN FEET

Printed by the Defense Mapping Agency Topographic Center 1-73

DISTRIBUTION RESTRICTED: SEE DOD MAP OR CHART CATALOG FOR GUIDANCE ON RELEASE OUTSIDE THE U. S. GOVERNMENT.

SCALE 1:250,000 ONITSHA NIGERIA

SERIES 1501 AIR SHEET NB 32-5 EDITION 2



POPULATED PLACES

First importance: IBADAN

Second importance: ABEOKUTA

Third importance: ERUWA

Fourth importance: Gbodogbo

Fifth importance: Asipa-Oniyangi

BOUNDARIES

International: ————

Primary administrative: ————

Reservation: ————

HYDROGRAPHY

Rock: Sunken; Awash: ————

Wreck: Sunken; Exposed: ————

Limit of danger: Reef: ————

Foreshore flat: Salt evaporator: ————

Depth curves: ————

ROADS

All weather, hard surface: ————

Two or more lanes wide/federal: ————

One lane wide: ————

All weather, loose surface: ————

Two or more lanes wide/State: ————

One lane wide: ————

Fair or dry weather, loose surface: ————

Track - trail: ————

RAILROADS

Normal gauge 3'6" (11.06m): ————

Single multiple track: ————

OTHER FEATURES

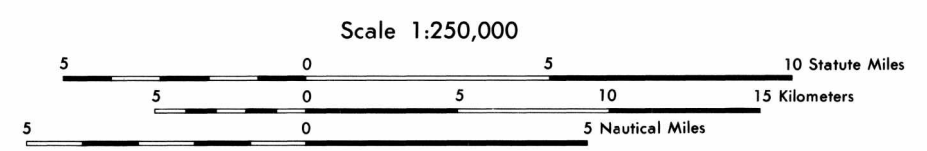
Landmark feature or object: ————

Spot elevation: Normal; Critical: 504 1900

VEGETATION

Jungle; Scattered trees: ————

Sand; Land subject to inundation: ————



CONTOUR INTERVAL 200 FEET WITH SUPPLEMENTARY CONTOURS AT 100 FEET INTERVALS

BLUE NUMBERED LINES INDICATE THE 10,000 FOOT UNIVERSAL TRANSVERSE MERCATOR GRID, ZONE 32 CLARKE 1880 SPHEROID

USERS ARE URGED TO REFER CORRECTIONS AND COMMENTS FOR INCREASING THE USEFULNESS OF THIS GRAPHIC TO: (US Users) Director, Defense Mapping Agency Aerospace Center, ATTN: PPO, 28 8 Arsenal St., St. Louis, Mo. 63118 (UK Users) Directorate of Military Survey, Ministry of Defense, London

AERODROMES (Military or Civil)

EDNA/50/1: 725

Field limits with runway pattern: ————

EDNA—Name

50—Length of longest runway to nearest hundreds of feet

—Soft or unpaved surface

U—Unknown surface

725—Elevation

Field limits, with runway pattern unknown: ————

Field limits unknown, with runway pattern: ————

Field limits and runway pattern unknown: ————

SEAPLANE BASE

SEAPLANE (EMERGENCY): ————

HELIPORT

RADIO FACILITIES

RADIO RANGE LF/MF: ————

RNG HURN

VISUAL AIDS AND OBSTRUCTIONS

Obstruction: 338 (79)

338—Elevation of obstruction top, above sea level

(79)—Elevation of obstruction top, above ground level

Group obstruction: ————

Radio facility obstruction: ————

Power transmission line: ————

TERRAIN ELEVATIONS

HIGHEST KNOWN elevation is 1936 feet at 6°38'N, 7°24'E

NOTES

Only obstructions 200 feet or more above ground level are shown. The location of obstructions is not necessarily complete.

On this map a line is generally considered as being 8 feet (2.5 meters) in width.

ALIGNMENT OF ALL BOUNDARIES IS APPROXIMATE

MAXIMUM TERRAIN ELEVATIONS

Maximum Terrain elevation figures, centered in the area bounded by the ticked lines of LATITUDE and LONGITUDE are represented in THOUSANDS and HUNDREDS of feet, BUT DO NOT INCLUDE ELEVATIONS OF VERTICAL OBSTRUCTION.

EXAMPLES:

5100 feet

51

SERIES 1501 AIR SHEET NB 32-5 EDITION 2