

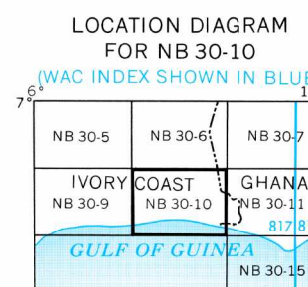
1:250,000 — EDITION 2
ABIDJAN, IVORY COAST
1501A NB 30-10
IVORY COAST AND GHANA



RELIABILITY OF THIS SHEET

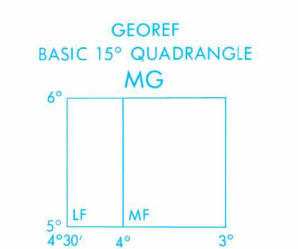
Accuracy as stated	95%	90%	85%	80%
Horizontal accuracy	1:10,000	1:20,000	1:30,000	1:40,000
Vertical accuracy	1:10,000	1:20,000	1:30,000	1:40,000

Vertical Datum: Mean Sea Level



GLOSSARY

- Bac.....ferry
- Baie.....bay
- Canal.....channel
- Chutes.....falls
- Forêt classée.....forest reserve
- Gare.....railroad station
- Île.....island
- Lac.....lake
- Lagune.....lagoon
- Mont.....mount, mountain
- Parc.....park
- Rapide.....rapids
- Reserve.....reserve
- Reserve forestière.....forest reserve
- Rocher.....rock



CAUTION
AIR INFORMATION CURRENT THROUGH
NOTAMS and USAF/USN Flight Information Publications for the latest information from the Chart Updating Manual for other chart revision information.

LINE OF EQUAL MAGNETIC VARIATION
OR 1975
(Annual rate of change 5' decrease)

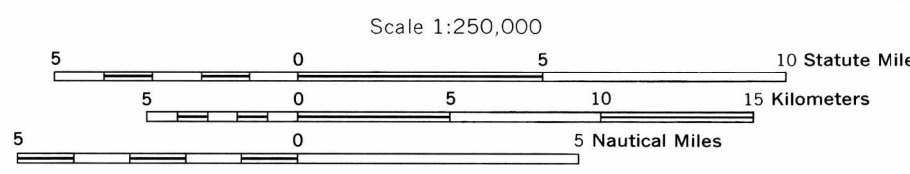


Prepared under the direction of the Defense Intelligence Agency and published by Army Map Services, Corps of Engineers, U.S. Army, Washington, D.C. Compiled in 1966 from best available source materials.



LEGEND

ROADS	All weather	1 LANE
	Hard surface, two or more lanes wide	2 LANES
	Loose or light surface, two or more lanes wide	2 LANES
	Hard surface, one lane wide	1 LANE
	Fair or dry weather, loose surface	1 LANE
	Cart tracks, footpaths, trails	Single track
		Multiple track
RAILROADS	Normal gauge 1 m (3'3 3/4")	Single track
	Narrow gauge	Single track
	Reservation	Single track
BOUNDARIES	International	Double line
	Primary administrative	Single line
	Reserve	Single line
WOODS/BRUSHWOOD	Scattered trees, low growth	Light green
	Orchard, plantation, vineyard	Dark green
	Rice	Light green



CONTOUR INTERVAL APPROXIMATELY 135 FEET WITH SUPPLEMENTARY CONTOURS AT 65 FOOT INTERVALS

TRANSVERSE MERCATOR PROJECTION

BLUE NUMBERED LINES INDICATE THE 10,000-METER UNIVERSAL TRANSVERSE MERCATOR GRID, ZONE 30 CLARK 1880 SPHEROID

USERS SHOULD REFER TO THE ADDITIONAL NOTES AND COMMENTS TO THE MAP'S CUSTOMER HELP INDEX, 1-800-456-0889. COMMERCIAL 1-34-286-1228 (286-486-1228 ON WIRE) TO ATTN: CDD MAIL STOP 7-37 NATIONAL MAGWAY AND MAPPING AGENCY 4600 SANDHURST ROAD BETHESDA MD 20816-2003

JOINT OPERATIONS GRAPHIC (AIR)

ELEVATIONS IN FEET DEPTHS IN FATHOMS

AERODROMES (Military or Civil)

EDNA/50/1 725

EDNA—Name

50—Length of longest runway to nearest hundreds of feet

5—Soft or unimproved surface

725—Elevation

Field limits, with runway pattern unknown

Field limits unknown, with runway pattern

Field limits and runway pattern unknown

HELIPORT

RADIO FACILITIES

RADIO RANGE VLF/MF

MULTIPLE RADIO FACILITIES

CONTROLLED AIRSPACE

ATLANTIC ADIZ

ADIZ

VISUAL AIDS AND OBSTRUCTIONS

1108 (259)

OBSTRUCTION

1108—Elevation of obstruction top, above sea level.

(259)—Elevation of obstruction top, above ground level.

Group obstruction

Radio facility obstruction

Power transmission line

Ocean station vessel (Normal position)

Visual ground sign

Aero light, Marine light

TERRAIN ELEVATIONS

HIGHEST elevation is 1079 feet located at 5°45'N, 3°01'W

± following elevation value indicates accuracy is not within 67 feet

ATTENTION

THIS CHART CONTAINS MAXIMUM ELEVATION FIGURES (MEF)

The Maximum Elevation Figures shown in quadrangles bounded by ticked lines of latitude and longitude are represented in THOUSANDS and HUNDREDS of feet above mean sea level. The MEF is based on information available concerning the highest known features in each quadrangle, including terrain and obstructions (trees, towers, antennas, etc.). In areas of extreme elevation relief, the MEF is shown by a note spaced across the area.

EXAMPLE: 12,500 feet

125

NOTES

Only obstructions 200 feet or more above ground level are shown.

THIS GRAPHIC IS NOT AN AUTHORITY ON INTERNATIONAL BOUNDARIES.

NSN 7641014101455

NIMA REF. NO. 1501ANB3010

ED. NO. 002

1:250,000 — EDITION 2
ABIDJAN, IVORY COAST
1501A NB 30-10