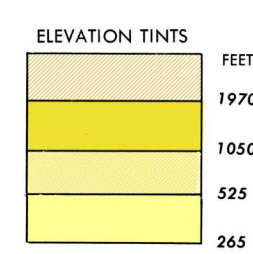


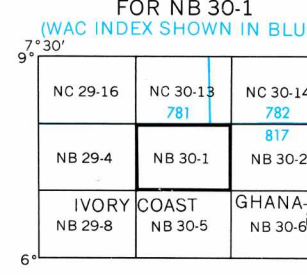
1:250,000 - EDITION 2
BOUAKÉ, IVORY COAST
1501A NB 30-1



RELIABILITY OF THIS SHEET

Table with 2 columns: AREA A and AREA B. Rows include Accuracy, Horizontal position, Vertical position, and Level rate of map information. Includes a note: 'Map was field checked...'

LOCATION DIAGRAM FOR NB 30-1



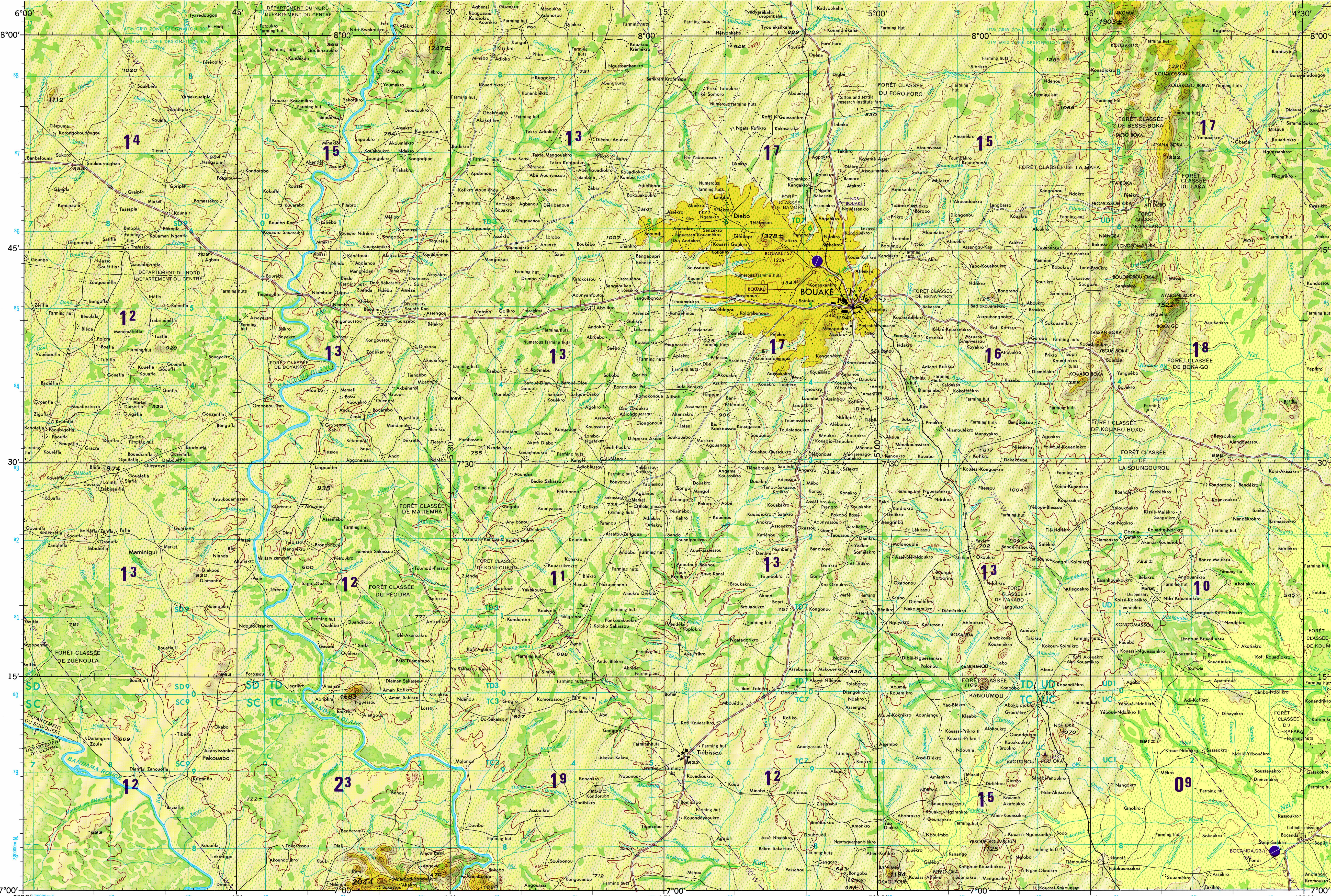
GLOSSARY

Forêt classée.....forest reserve
Marigot.....branch channel
Réserve.....reserve



CAUTION
AIR INFORMATION CURRENT THROUGH
1-5 SEPTEMBER 1978
Consult NOTAMS and USAF/USN flight information publications for the latest air information from the Chart Updating Manual for other relevant information.

INES OF EQUAL MAGNETIC VARIATION FOR 1975
(Annual rate of change 5' decrease)



Prepared under the direction of the Defense Intelligence Agency and published by Army Map Service, Corps of Engineers, U.S. Army, Washington, D.C. Compiled in 1966 from best available source materials.



ELEVATIONS IN FEET

JOINT OPERATIONS GRAPHIC (AIR)

Scale 1:250,000
0 5 10 15 Statute Miles
0 5 10 Kilometers
0 5 Nautical Miles

CONTOUR INTERVAL APPROXIMATELY 135 FEET WITH SUPPLEMENTARY CONTOURS AT 65 FOOT INTERVALS

USERS SHOULD REFER CORRECTIONS, ADDITIONS, AND COMMENTS TO THE NIMA OPERATIONAL HELP DESK: 1-800-405-0888, COMMERCIAL 314-263-4864, DSN 682-8846; OR WRITE TO DIRECTOR, NATIONAL MAPS AND MAPING AGENCY, ATTN: 15, MAIL STOP L-88, 4800 SANGAMORE ROAD, BETHESDA, MD 20818-3003.

TRANSVERSE MERCATOR PROJECTION

BLUE NUMBERED LINES INDICATE THE 10,000 METER UNIVERSAL TRANSVERSE MERCATOR GRID, ZONE 30, CLARK 1980 SPHEROID

ELEVATIONS IN FEET

- AERODROMES (Military or Civil) EDNA/50/4 725
- Field limits with runway pattern
- EDNA-Name
- 50-Length of longest runway to nearest hundreds of feet
- 5-Soft or unimproved surface
- 725-Elevation
- Field limits, with runway pattern unknown
- Field limits, unknown, with runway pattern
- Field limits and runway patterns unknown
- SEAPLANE BASE
- SEAPLANE (EMERGENCY)
- HELIPORT
- RADIO FACILITIES
- RADIO RANGE 1/1/1/1
- MULTIPLE RADIO FACILITIES

CONTROLLED AIRSPACE

- ATLANTIC ADIZ
- ADIZ
- VISUAL AIDS AND OBSTRUCTIONS 1108 (259)
- OBSTRUCTION 1108-Elevation of obstruction top, above sea level. (259)-Elevation of obstruction top, above ground level.
- Group obstruction
- Radio facility obstruction
- Power transmission line
- Ocean station vessel (Normal position)
- Visual ground sign
- Aero light Marine light
- TERRAIN ELEVATIONS
HIGHEST ELEVATION is 2044 feet located at 7°00'N, 5°26'W
± following elevation value indicates accuracy is not within 67 feet.

ATTENTION
THIS CHART CONTAINS
MAXIMUM ELEVATION FIGURES (MEF)

The Maximum Elevation Figures shown in quadrangles bounded by ticked lines of latitude and longitude are represented in THOUSANDS and HUNDREDS of feet above mean sea level. THE MEF IS BASED ON INFORMATION AVAILABLE CONCERNING THE HIGHEST KNOWN FEATURES in each quadrangle, including terrain and obstructions (lines, towers, antennas, etc.) in areas of extensive unrelieved relief, the MEF is shown by a wavy spaced across the area.

EXAMPLE: 12,500 feet 125

NOTES
Only obstructions 200 feet or more above ground level are shown. THIS GRAPHIC IS NOT AN AUTHORITY ON INTERNATIONAL BOUNDARIES.

NSN 7641014101395
NIMA Ref No 1501ANB3001
ED NO 002

1:250,000 - EDITION 2
BOUAKÉ, IVORY COAST
1501A NB 30-1