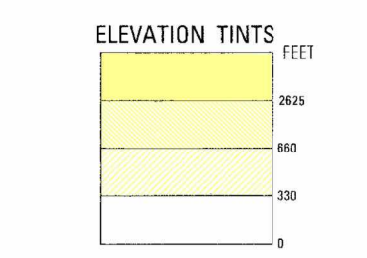


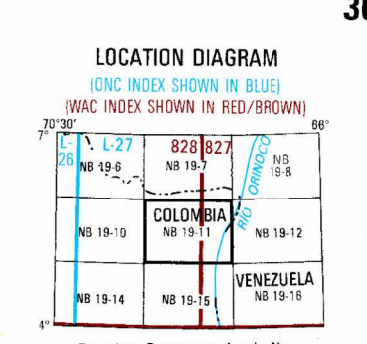
SERIES 1501 AIR SHEET NB 19-11 EDITION 1



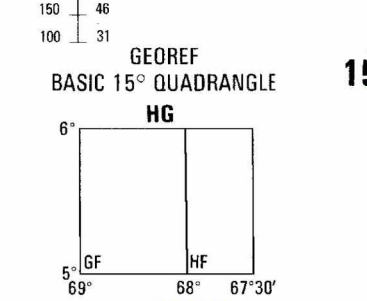
RELIABILITY OF THIS GRAPHIC table with columns for Horizontal, Vertical, and Date of Information, and rows for Accuracy and Assumptions.

Horizontal Datum: WGS 84 Date Horizontal: WGS 84 Vertical Datum: Mean Sea Level Date Vertical: NAD 83 Transverse Mercator Projection Proyección Transversa de Mercator

GLOSSARY table with columns for GLOSARIO and GLOSSARY, listing various geographical features and their symbols.



CONVERSION OF ELEVATIONS table with columns for FEET and METERS, showing conversion factors for various elevation ranges.



CAUTION AIR INFORMATION CURRENT THROUGH 31 OCTOBER 1993. Consult NOTAMS and flight information publications for the latest information on obstructions.

CAUTION LINES OF EQUAL MAGNETIC VARIATION FOR 1990. Annual rate of change 1" increase. LÍNEAS DE IGUAL VARIACIÓN MAGNÉTICA PARA 1990. Cambio anual 1" aumento.

CAUTION Visual obstructions, including powerlines, have been extracted from the most reliable sources available and are shown in this chart as a warning that they are located in the area.

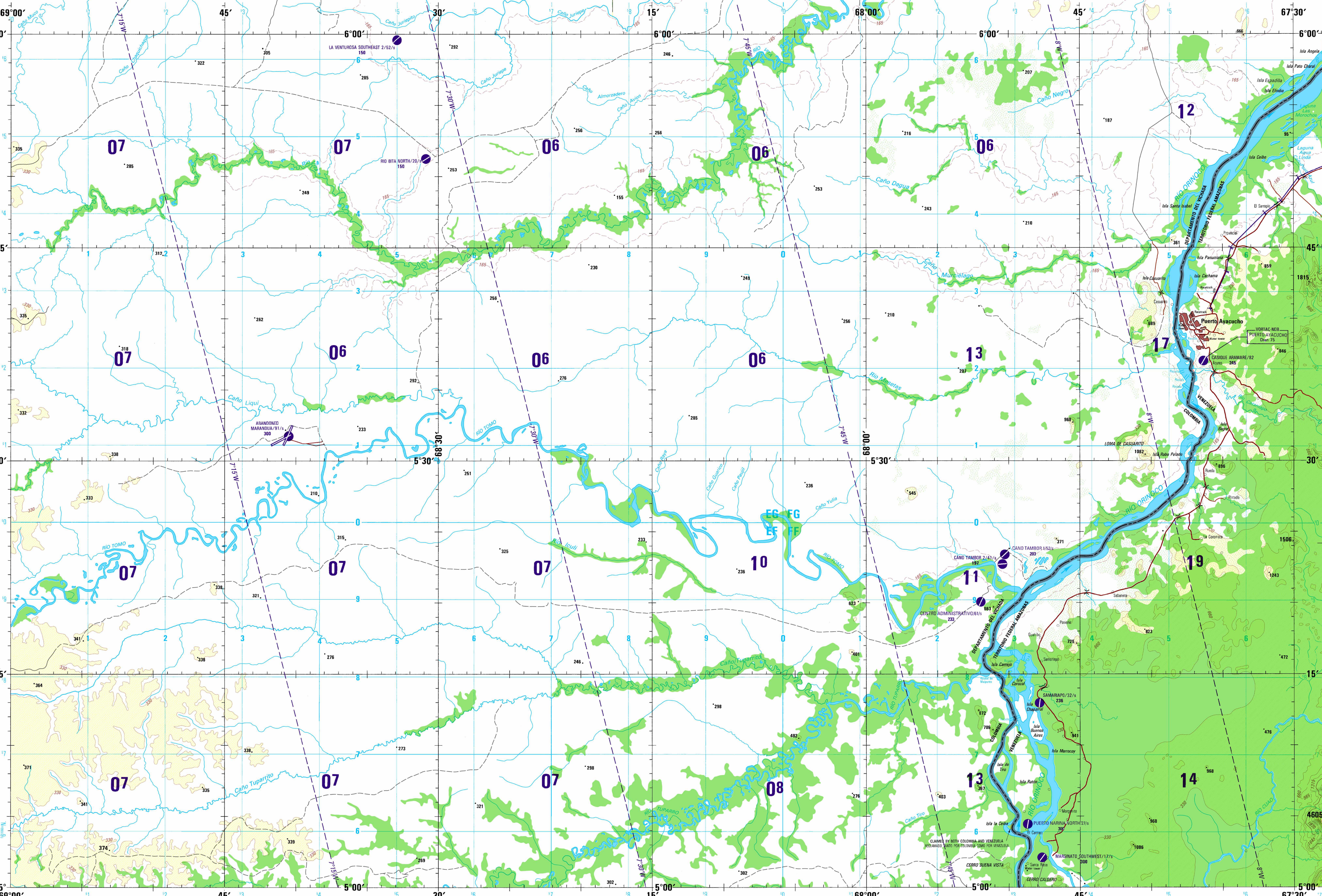
ATTENTION THIS CHART CONTAINS MAXIMUM ELEVATION FIGURES (MEF). The Maximum Elevation Figure chart in quadrangles bounded by red lines of latitude and longitude are shown in this chart as a warning that they are located in the area.

LIMITED DISTRIBUTION Distribution authorized to DoD, IAW 10 U.S.C. 4052(a)(2) and 48 CFR 101-11.6. Distribution authorized to other agencies by agreement with the Department of Defense.

DISTRIBUCIÓN LIMITADA Distribución autorizada al Departamento de Defensa, IAW 10 U.S.C. 4052(a)(2) y 48 CFR 101-11.6. Distribución autorizada a otras agencias de acuerdo con el Departamento de Defensa.

SCALE 1:250,000 PUERTO AYACUCHO, VENEZUELA; COLOMBIA SERIES 1501 AIR SHEET NB 19-11 EDITION 1

19N



Prepared and published by the Defense Mapping Agency Aerospace Center, St. Louis, Missouri. Compiled April 1993. MAP INFORMATION AS OF 1990. INFORMACION CARTOGRAFICA EN FECHA DE 1990



JOINT OPERATIONS GRAPHIC (AIR)

SCALE 1:250,000 0 5 10 15 Statute Miles 0 5 10 15 Nautical Miles

CONTOUR INTERVAL APPROXIMATELY 330 FEET WITH SUPPLEMENTARY CONTOURS AT APPROXIMATELY 165 FOOT INTERVALS. ECUIDISTANCIA APROXIMADA DE LAS CURVAS DE NIVEL 330 PIES CON CURVAS SUPLEMENTARIAS A INTERVALOS DE 165 PIES

COORDINATE CONVERSION FROM WGS 84 DATUM TO BOGOTA DATUM. COORDINATE CONVERSION FROM WGS 84 DATUM TO PSA 56 DATUM. CONVERSION DE COORDENADAS DEL SISTEMA GEODESICO MUNDIAL AL SISTEMA DE DATUM BOGOTA. CONVERSION DE COORDENADAS DEL SISTEMA GEODESICO MUNDIAL AL SISTEMA DE DATUM PSA 56.

USERS SHOULD REFER TO THE NATIONAL MAPS AND CHARTS SERVICE FOR THE LATEST INFORMATION ON THIS PRODUCT. EL GOBIERNO DE LOS ESTADOS UNIDOS DE AMERICA DEL NOROCCIDENTE DEBE SER CONSULTADO PARA OBTENER LA INFORMACION MAS ACTUALIZADA SOBRE ESTE PRODUCTO.

AERODROMES (Military or Civil) EDA-Name (IATA-Numero del aeropuerto) EDA-Subtype (Militar o civil) Runway pattern known (Configuracion de pista conocida) EDA-Name (IATA-Numero del aeropuerto) EDA-Subtype (Militar o civil) Runway pattern known (Configuracion de pista conocida)

CONTROLLED AIRSPACE ESPACIO AEREO CONTROLADO ADIZ (ZONA DE IDENTIFICACION DE DEFENSA AEREA) ATLANTIC ADIZ (ZONA DE IDENTIFICACION DE DEFENSA AEREA)

VISUAL AIDS AND OBSTRUCTIONS OSTACULOS Y AYUDAS VISUALES Obstruction (Obstaculo) Elevation of obstruction top, above sea level (Elevacion de la cumbre, sobre el nivel medio del mar) Group (Grupo) Elevation of obstruction top, above ground level (Elevacion de la cumbre, sobre el nivel del terreno)

NOTES - NOTAS No obstructions 200 feet or more above ground level are known to exist in this area. En esta zona no se conocen obstruccion de 200 pies (o) mas de altura sobre el nivel del terreno. Powerlines are shown except within populated place limits. Other obstructions are shown if they are 200 feet or more above ground level. Se muestran lineas de alta tension con la excepcion de dentro de los areas en areas que representan lugares poblados. Se muestran otras obstruccion de 200 o mas pies sobre el nivel terreno. No Aeronaves.

REPRINTED BY NMA 50-10

