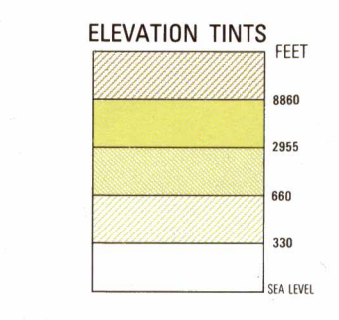


SERIES 1501 AIR SHEET NB 18-02 EDITION 1



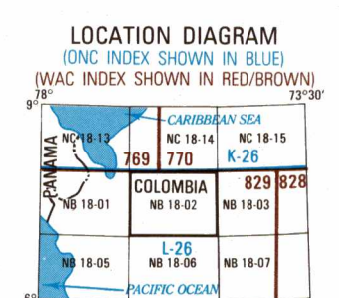
LIMITED DISTRIBUTION
Distribution authorized to DoD, IAW 10 U.S.C. 4130 & 4131. Release authorized to DoD, IAW 10 U.S.C. 4132 & 4133. All other requests for reproduction, in whole or in part, are prohibited.

RELIABILITY OF THIS GRAPHIC
(as determined by standard practices)

PLOTTING ACCURACY AREA I AREA II AREA III AREA IV	
Horizontal	± 1/16" (1:250,000) ± 1/32" (1:500,000) ± 1/64" (1:1,000,000) ± 1/128" (1:2,000,000)
Vertical	± 1/32" (1:500,000) ± 1/64" (1:1,000,000) ± 1/128" (1:2,000,000) ± 1/256" (1:4,000,000)
GRAPHIC FEATURES AREA I AREA II AREA III AREA IV	
Mapwork Features	1972 1971-72
Vegetation	1972 1971-72
Contours	1972 1971-72
All other features	1972 1971-72 1965

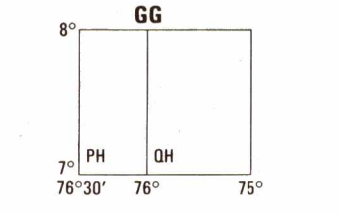
Horizontal Datum: World Geodetic System
Vertical Datum: Mean Sea Level
Transverse Mercator Projection

GLOSSARY
Alto mountain
Cordillera mountain range
Quebrada stream
Rio stream
Serranía mountain ridge



CONVERSION OF ELEVATIONS

FEET	METERS	FEET	METERS
1000	305	10000	3048
900	274	9000	2743
800	244	8000	2438
700	213	7000	2134
600	183	6000	1829
500	152	5000	1524
400	122	4000	1219
300	91	3000	914
200	61	2000	610
150	46	1500	457
100	31	1000	305

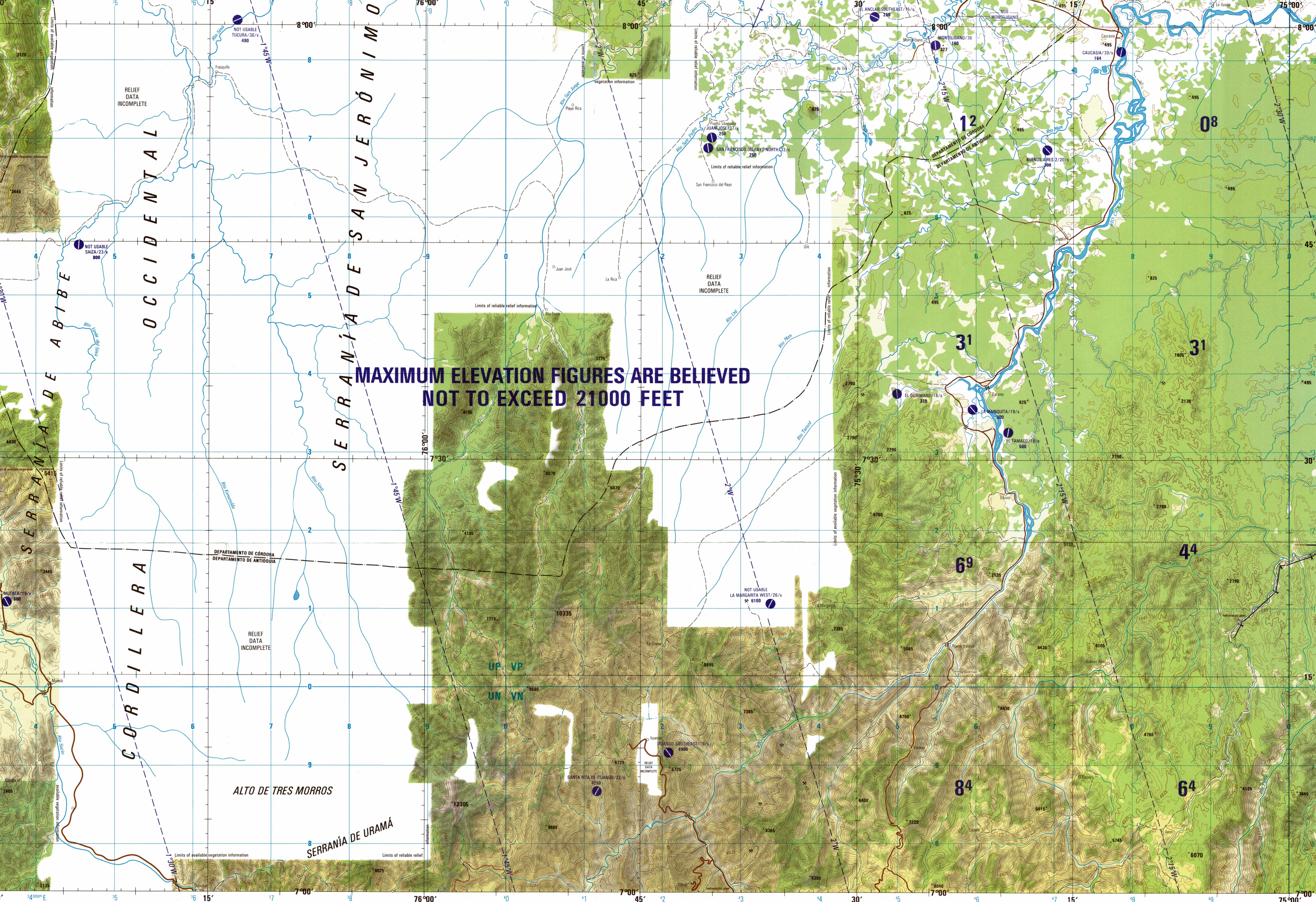


CAUTION
AIR INFORMATION CURRENT THROUGH 3 JULY 1990
Copyright and other information for the latest air information, the OMA Aeronautical Chart (Obstacle Manual of the OMA), Aeronautical Chart Supplemental Document, for other chart revision information.

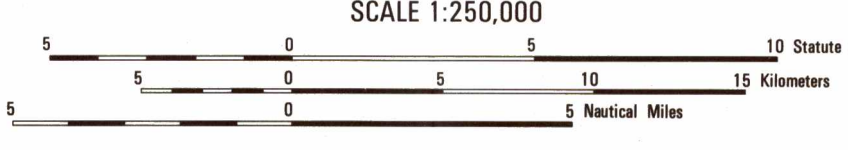
CAUTION
Vertical obstructions, including powerlines, have been extracted from the most reliable sources available. However, there is no assurance that all are shown, or that their locations or heights are exact.

ATTENTION
THIS CHART CONTAINS MAXIMUM ELEVATION FIGURES (MEF)
The Maximum Elevation Figure shows in meters and feet the highest terrain elevation in the quadrangle. It is based on the highest terrain elevation shown on the quadrangle, including terrain and obstructions (towers, towers, antennas, etc.). In cases of extreme uncertainty, the MEF is a value based on the area.

SCALE: 1:250,000
MONTELIBANO, COLOMBIA
SERIES 1501 AIR SHEET NB 18-02 EDITION 1



JOINT OPERATIONS GRAPHIC (AIR)



CONTOUR INTERVAL APPROXIMATELY 330 FEET WITH SUPPLEMENTARY CONTOURS AT 165 FOOT INTERVALS
EQUIDISTANCIA APROXIMADA DE LAS CURVAS DE NIVEL 330 PIES CON CURVAS SUPLEMENTARIAS A INTERVALOS DE 165 PIES

COORDINATE CONVERSION WGS TO INTERNATIONAL ELLIPSOID
GRID: -3.3m. E., 8.2m. N.
GEOGRAPHIC: -1° Long., 3° Lat.
CONVERSION DE COORDENADAS WGS A INTERNACIONAL
Seno de Bomas Paralelas: -3.3m. E., 8.2m. N.
Geografica: -1° Long., 3° Lat.

ROADS — CAMINOS
All weather, hard surface
Transitable todo el año afirmado sólido.
Two or more lanes wide
Una o más vías de ancho
One lane wide
Una vía de ancho
Fair or dry weather, loose surface
Transitable en tiempo bueno y seco, afirmado suelto.
Cart track Camino de herradura
Trail (footpath) Sendero

RAILROADS — FERROCARRILES
Normal gauge 0.914m (3')
0.914 metros — Vía ancha o normal
Narrow gauge
Vía angosta

BOUNDARIES — LÍMITES
International International
Primary administrative Límite de división administrativa principal
Vegetation — VEGETACIÓN
Woods: Mangrove Bosque; Mangla
Orchard-vineyard; Swamp Huerta villosa; Ciénaga

DEPT. OF THE ARMY
18N

AERODROMES (Military or Civil)
AERODROMES (Militares o civiles)
Runway pattern known
Circuito de aterrizaje
EDNA/50/s
725

CONTROLLED AIRSPACE
ESPACIO AEREO CONTROLADO
ADIZ (ZONA DE IDENTIFICACIÓN DE DEFENSA AEREA)
ATLANTIC ADIZ

RADIO FACILITIES
INSTALACIONES DE RADIO
RADIO RANGE LF/MF
RADIOFARO LF/MF
MULTIPLE RADIO FACILITIES
INSTALACIONES MÚLTIPLES

RADIO AIDS TO NAVIGATION
RADIOAYUDAS A LA NAVEGACION
VHF OMNI RANGE (VOR)
RADIOFARO OMNIDIRECCIONAL
VHF (VOR)
VORTAC
TACAN
VOR with DME
VOR y DME INSTALADOS CONJUNTAMENTE
Other facilities
Otras instalaciones

DEPTHS IN FEET
PROFUNDIDADES EXPRESADAS EN PIES

VISUAL AIDS AND OBSTRUCTIONS
OBSTACULOS Y AYUDAS VISUALES
Obstruction Obstáculo
1000 — Elevation of obstruction top, above sea level.
Elevación de la cuspide, sobre el nivel del terreno
Group Obstruction Grupo de obstáculos
Radio facility obstruction Obstáculo construido por una instalación de radio
Visual transmission line Línea de alta tensión
Power transmission line Señal terrestre visual
Aero light Marine light
Luz aeronáutica; Luz marítima

TERRAIN ELEVATIONS
ELEVACIONES DEL TERRENO
Spot elevation, Normal, Critical
Elevación spot, Normal, Crítica
HIGHEST ELEVATION IS UNKNOWN
Elevación MÁXIMA DESCONOCIDA

NOTES — NOTAS
± following elevation value indicates accuracy is not within 100 feet.
Cuando ± sigue al valor de cota, esto indica que la precisión es de metros de 100 pies.
On this graphic a lane is generally considered as being 2.5 to 3.6 meters (8 to 12 feet) in width.
En esta gráfica se considera que el ancho de una pista de carretera es de 2.5 a 3.6 metros (8 a 12 pies).
Powerlines are shown except within populated place tints. Other obstructions are shown if they are 200 feet or more above ground level.
See caution note.
Distorsiones representadas las líneas de alta tensión excepto dentro del sombreado de poblaciones. Señales construidas sobre los obstáculos que tengan una altura igual o superior a los 200 pies sobre el nivel del terreno. Véase nota de precaución.
THE REPRESENTATION OF BOUNDARIES IS NOT NECESSARILY AUTHORITY.
LOS LÍMITES FRONTERIZOS REPRESENTADOS EN ESTA CARTA PUEDEN SER INEXACTOS.

NSN 764104005745
NMA REF. NO. 1501ANB1802