

SERIES 1501 AIR SHEET NA 20-08 EDITION 1

ELEVATION TINTS

FEET	FEET
2955	2955
1870	1870
985	985
495	495
165	165

RELIABILITY OF THIS GRAPHIC (as determined by standard practices)

CLASS	RELIABILITY
I	Very High
II	High
III	Medium
IV	Low

PLOTTING ACCURACY (AREA I, AREA II, AREA III, AREA IV) 90% ASSURANCE

Horizontal	Vertical
1:5000	1:5000
1:3000	1:3000
1:2000	1:2000
1:1000	1:1000

DATE OF INFORMATION: 1984

GRAPHIC FEATURE: 1984

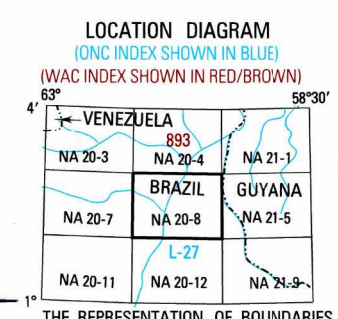
All other features: 1981, 1984, 1984, 1984

Graphic not field checked.

Horizontal Datum: World Geodetic System  
Vertical Datum: Mean Sea Level  
Transverse Mercator Projection

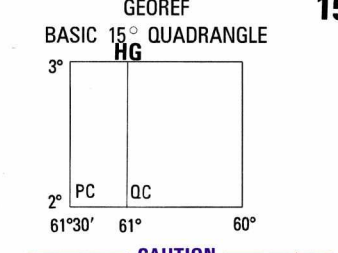
GLOSSÁRIO GLOSSARY

Fazenda: farm  
Igarapé: stream  
Ilha: island  
Rio: river  
Serra: mountain range, mountain, hill



CONVERSION OF ELEVATIONS

FEET	METERS	FEET	METERS
1000	305	10000	3048
900	274	9000	2743
800	244	8000	2438
700	213	7000	2134
600	183	6000	1829
500	152	5000	1524
400	122	4000	1219
300	91	3000	914
200	61	2000	609
150	46	1500	457
100	31	1000	305



CAUTION

AIR INFORMATION CURRENT THROUGH 5 NOVEMBER 1983

Consult NOTAMS and Flight Information Publications for the latest air information. The FAA Aeronautical Chart (Edition 1) Manual or Aeronautical Information Chart (Edition 1) Manual or other chart revision information.

LINES OF EQUAL MAGNETIC VARIATION FOR 1990

(Annual rate of change 2' increase)

LÍNEAS DE IGUAL VARIAÇÃO MAGNÉTICA PARA 1990

(Índice anual de variação: 2' aumento)

CAUTION

Vertical obstructions, including obstructions, have been omitted from this chart unless otherwise indicated. However, there is no assurance that all are shown, or that their locations or heights are exact.

ATTENTION

THIS CHART CONTAINS MAXIMUM ELEVATION FIGURES ONLY

The Maximum Elevation Figures shown in obstructions are shown in feet above ground level. They are shown above mean sea level. The MEF is based on the highest available information concerning the highest known feature in each quadrangle, including terrain and obstructions. (From: NGA, 1984)

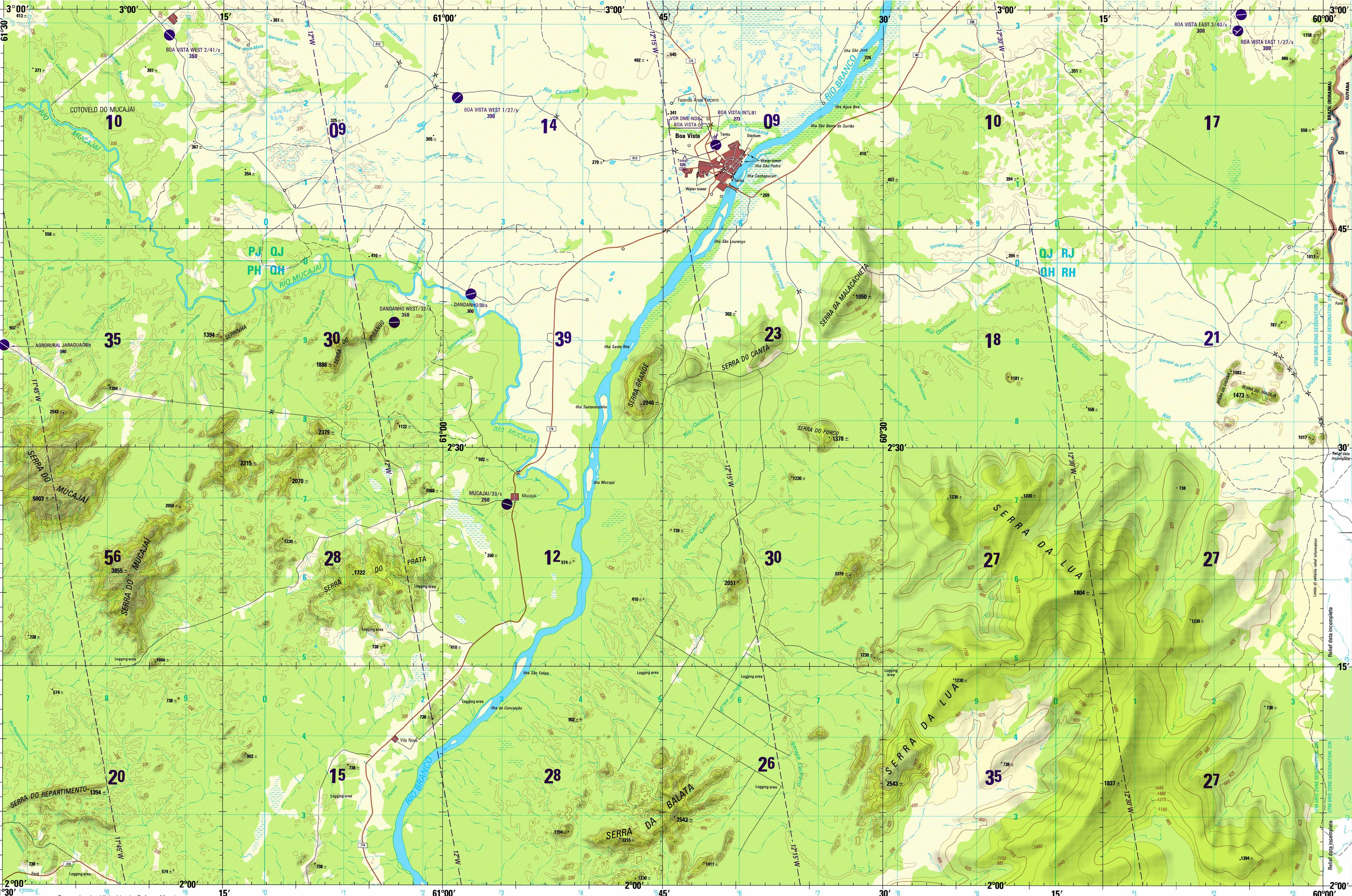
LIMITED DISTRIBUTION

Distribution authorized to DOD, IAW 16 USC § 1510 & 455. Release authorized to U.S. DoD contractors IAW 48 C.F.R. § 1512.245-7000. Refer other requests to Headquarters, NSA, ATTN: Release Officer, Stop P-25, Defense on 'T' Official Use Only. Removal of this cover is prohibited.

SCALE 1:250,000

BOA VISTA, BRAZIL

SERIES 1501 AIR SHEET NA 20-08 EDITION 1



Prepared and published by the Defense Mapping Agency Aerospace Center, St. Louis, Missouri. Compiled April 1983. MAP INFORMATION AS OF 1984. INFORMAÇÃO CARTOGRÁFICA COM DATA DE 1984.

THE DATUM AND ELLIPSOID FOR THIS AREA HAVE BEEN CHANGED. FOR ADJACENT AND OVERLAPPING SHEETS, THERE ARE NO SIGNIFICANT CHANGES IN GRID OR GEOGRAPHIC VALUES AT THIS SCALE. NESTA ÁREA, DADO O ELIPSOIDE TEM HAVIDO ALTERAÇÕES. OS VALORES GEOGRÁFICOS E ADJACENTES, NÃO TEM ALTERAÇÕES SIGNIFICANTES NO QUADRICULADO OU NOS VALORES GEOGRÁFICOS NESTA ESCALA.

UNIT	DESCRIPTION	EXAMPLE
1	Point, large number labeling the vertical axis, the horizontal axis, or the center of a circle.	Example: 1000
2	Point, large number labeling the horizontal axis, the vertical axis, or the center of a circle.	Example: 1000
3	Point, large number labeling the horizontal axis, the vertical axis, or the center of a circle.	Example: 1000

GRID ZONE DESIGNATION: 20N

ROADS — RODOVIAS

All-weather, hard surface  
Transversal todo ano, revestimento sólido

Two or more lanes wide  
Dois ou mais vias de largura

One lane wide  
Uma via de largura

All-weather, loose or light surface  
Transversal todo ano, revestimento sólido ou ligero

Two or more lanes wide  
Dois ou mais vias de largura

One lane wide  
Uma via de largura

Fair or dry weather, loose surface  
Transversal todo ano, revestimento sólido

Cart track  
Caminho para carruagens

Trail (Footpath)  
Trilha

RAILROADS — ESTRADAS DE FERRO

Normal gauge  
Bitola larga ou normal

Narrow gauge  
Bitola estreita

BOUNDARIES — LIMITES

International  
Fronteiras internacionais

First-order administrative division  
Divisão administrativa de primeira classe

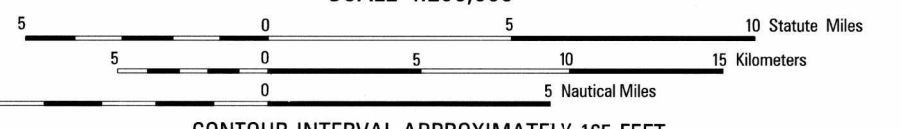
VEGETATION — VEGETAÇÃO

Woods: Mangrove, Forest, Mangrove  
Floresta: Mangrove, Floresta, Mangrove

Orchard-vineyard; Stamp; Pomar-vinhedo, Banhado

JOINT OPERATIONS GRAPHIC (AIR)

SCALE 1:250,000



CONTOUR INTERVAL APPROXIMATELY 165 FEET  
EQUIDISTANCIA APROXIMADA DAS CURVAS DE NÍVEL 165 PÉS

COORDINATE CONVERSION FROM WGS 84 DATUM TO DATUM WGS 84 ELLIPSOID TO SAD DATUM INTERNATIONAL ELLIPSOID  
CONVERSÃO DAS COORDENADAS DE DADO WGS 84 ELLIPSOIDE WGS 84 DADO SAD DATUM INTERNACIONAL ELLIPSOIDE

BLUE NUMBERED LINES INDICATE THE 10,000 METER UNIVERSAL TRANSVERSE MERCATOR GRID, ZONE 20, WORLD GEODETIC SYSTEM ELLIPSOID  
LÍNEAS NUMERADAS AZUIS INDICAM O QUADRICULADO DE 10.000 METROS, TRANSVERSA UNIVERSAL DE MERCATOR, ZONA 20, ELIPSOIDE DO SISTEMA GEODÉSICO MUNDIAL

USERS SHOULD REFER CORRECTIONS, ADDITIONS, AND COMMENTS TO THE NSA OPERATIONAL HELP DESK: 1-800-451-0886 COMMERCIAL 314-226-4846; OR WRITE TO DIRECTOR, NATIONAL GEOGRAPHIC INTELLIGENCE AGENCY, ATTN: ES, MAIL STOP L-88, 4000 SANGAMORE ROAD, BETHESDA, MD 20816-5003.

© COPYRIGHT 1984 BY THE UNITED STATES GOVERNMENT. NO COPYRIGHT CLAIMS UNDER TITLE 17 U.S.C.  
© GOVERNO DOS ESTADOS UNIDOS 1984. NÃO REIVINDICAMOS DIREITOS AUTORAIS DE ACÓRDO COM O TÍTULO 17 U.S.C. (DODIG DOS ESTADOS UNIDOS)

AERODROMES (Military or Civil)  
AERÓDROMOS (Militares ou Cíveis)

Runway pattern known  
Configuração da pista conhecida

Runway pattern unknown  
Configuração da pista desconhecida

HELIPORT HELIPAD  
HELIPORTO HELIPAD AT HOSPITAL  
HELIPORTO HELIPAD EM HOSPITAL

HELIPORT HELIPAD AT HOSPITAL  
HELIPORTO HELIPAD EM HOSPITAL

CONTROLLED AIRSPACE  
ESPACIO AÉREO CONTROLADO

RADIO FACILITIES  
INSTALAÇÕES DE RÁDIO

RADIO RANGE LF / MF  
RADIOFAZEL LF / MF

MULTIPLE RADIO FACILITIES  
INSTALAÇÕES MÚLTIPLES DE RÁDIO

RADIO AIDS TO NAVIGATION  
RADIOAJUDAS À NAVEGAÇÃO

VHF OMNI RANGE (VOR) / VORTAC  
RADIOFAZEL OMNIDIRECIONAL (VH (VOR))

HELIPORT HELIPAD AT HOSPITAL  
HELIPORTO HELIPAD EM HOSPITAL

VISUAL AIDS AND OBSTRUCTIONS  
OBSTRUÇÕES E AJUDAS VISUAIS

OBSTRUCTION OBSTACULOS  
ELEVATION OF OBSTRUCTION TOP, ABOVE SEA LEVEL  
1033 (1033)

ELEVATION OF OBSTRUCTION TOP, ABOVE GROUND LEVEL  
(350) - Elevation of obstruction top, above ground level

GROUP OBSTRUCTION GRUPO DE OBSTRUÇÕES  
RADIO FACILITY OBSTRUCTION (Radiofázel)

POWER TRANSMISSION LINE (Linha de alta tensão)

AERO LIGHT MARINE LIGHT  
Luz aérea / Luz marítima

TERRAIN ELEVATIONS ELEVACIONES DO TERRENO  
Spot elevation: Normal Critical  
Cota: Normal / Crítica

HIGHEST ELEVATION IS UNKNOWN  
MÁXIMA É DESCONHECIDA

