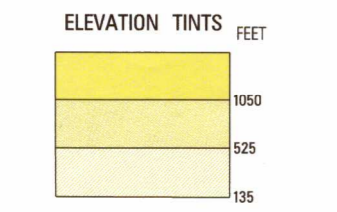
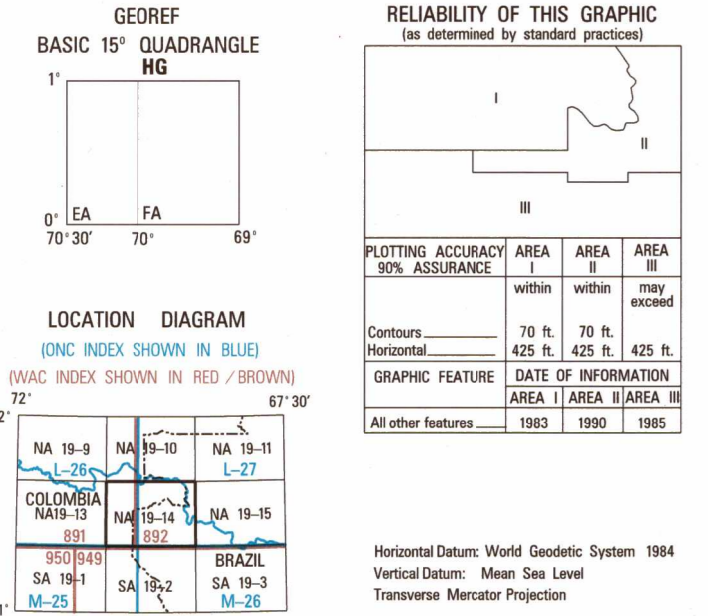


SERIES 1501 AIR SHEET NA 19-14 EDITION 1



CONVERSION OF ELEVATIONS table with columns for FEET and METERS, showing conversion factors for various elevation ranges.

AERODROMES (Military or Civil) AERODROMOS (Militares ou Cíviles)

Runway pattern known. Configuration de pista conhecida. Runway pattern unknown. Configuration de pista desconhecida.

RADIO FACILITIES. INSTALACIONES DE RADIO. VOR VORTAC. TACAN VOR/DME. TACAN VOR/DME.

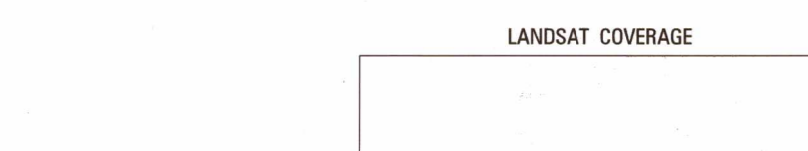
RADIO RANGE LF/MF. RADIOFAZES LF/MF. RADIOFAZES HF/MF. MULTIPLE RADIO FACILITIES. INSTALACIONES MÚLTIPLES DE RADIO.

CONTROLLED AIRSPACE. ESPACIO AEREO CONTROLADO. ADOZ. ADOZ.

VISUAL AIDS AND OBSTRUCTIONS. OBSTACULOS Y AYUDAS VISUALES. Obstruction. Obstrucción. Obstrução.

Visual ground sign. Señal terrestre visual. Air light. Luz aérea. Light flare. Luz señalizadora. Light flare. Luz señalizadora.

Prepared and published by the Defense Mapping Agency Aeronautical Center, St. Louis, Missouri. Completed JULY 1994.



LANDSAT THEMATIC MAPPER (TM) table with columns for ACQUISITION DATE, SCENE ID, PATH / ROW, and DIRECTION OF SOLAR ILLUMINATION.

PHOTOGRAPHIC LEGEND. URBAN AREAS. GRASSLAND AND AGRICULTURAL AREAS. FORESTED AREAS. FLOATING AQUATIC VEGETATION. MOUNTAINS ABOVE TREE LINE. CLEAR WATER. SCATTERED CLOUDS.

CAUTION AIR INFORMATION CURRENT THROUGHOUT. Vertical obstructions, including communication towers, have been indicated from the most reliable source available. Caution: Not all telephone and electric service lines are shown, or that their locations or heights are exact.

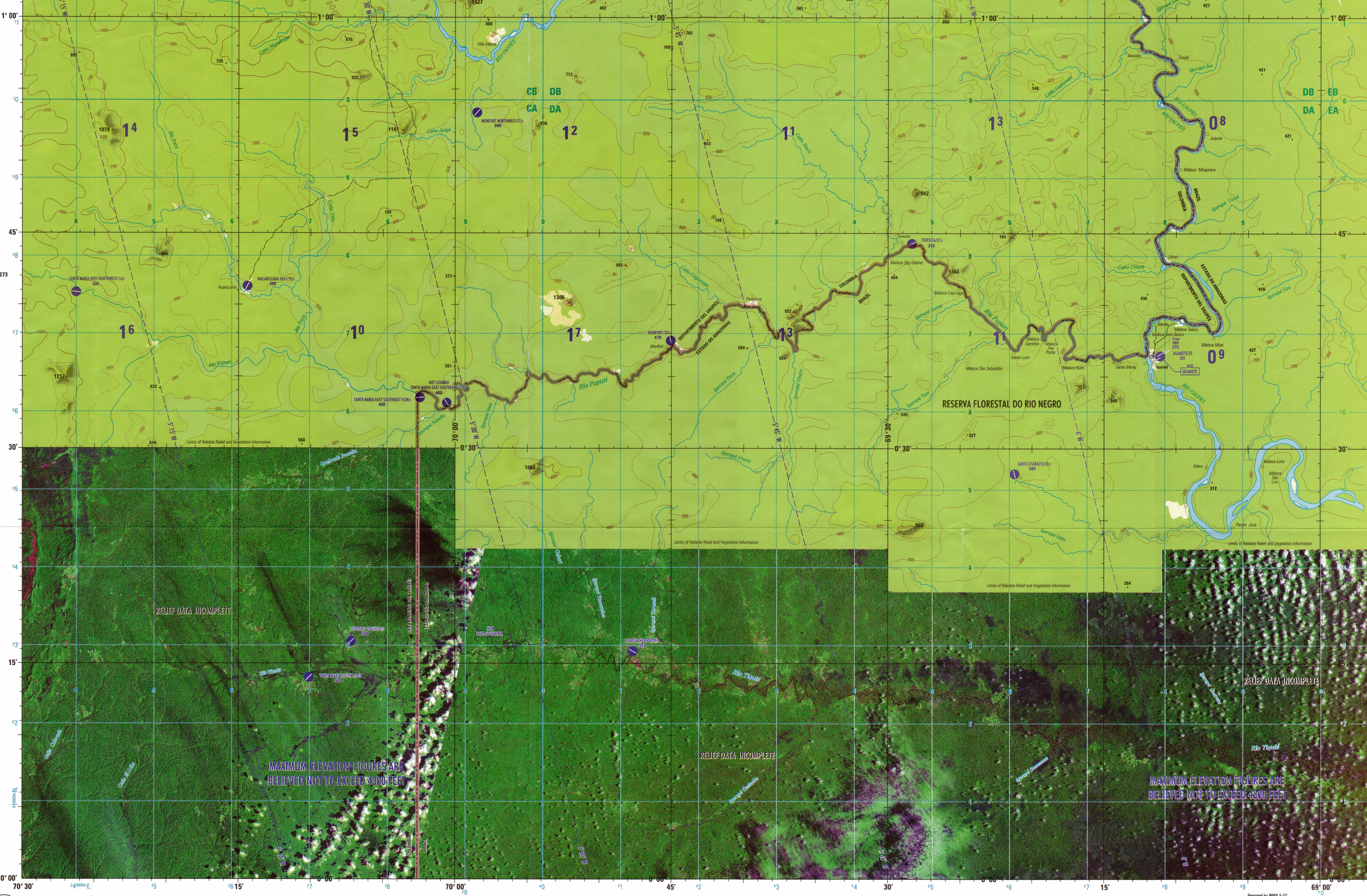
Vertical obstructions, including communication towers, have been indicated from the most reliable source available. Caution: Not all telephone and electric service lines are shown, or that their locations or heights are exact.

Vertical obstructions, including communication towers, have been indicated from the most reliable source available. Caution: Not all telephone and electric service lines are shown, or that their locations or heights are exact.

Vertical obstructions, including communication towers, have been indicated from the most reliable source available. Caution: Not all telephone and electric service lines are shown, or that their locations or heights are exact.

Vertical obstructions, including communication towers, have been indicated from the most reliable source available. Caution: Not all telephone and electric service lines are shown, or that their locations or heights are exact.

Vertical obstructions, including communication towers, have been indicated from the most reliable source available. Caution: Not all telephone and electric service lines are shown, or that their locations or heights are exact.



MAP INFORMATION AS OF 1990. ELEVATIONS IN FEET. ELEVACIONES EN PIES. ELEVACOES EM PÉS. JOINT OPERATIONS GRAPHIC (AIR). SCALE 1:250,000. ELEVATIONS IN FEET. ELEVACIONES EN PIES. ELEVACOES EM PÉS.

LIMITED DISTRIBUTION. Distribution authorized to the Department of Defense, U.S. DOD contractors and to U.S. Government Agencies supporting DOD functions by authority of the Director, Defense Mapping Agency, 30 May 1990. Other requests shall be referred to Headquarters, DMAP, ATTN: SGP. Do not use for "For Official Use Only".

DISTRIBUICAO LIMITADA. Distribuição autorizada para o Departamento de Defesa (DOD), para contratantes das Empresas Unidas e da DOD, e para agências do governo dos Estados Unidos que são assistidas no DOD pela autoridade do Diretor, Defense Mapping Agency, 30 maio 1990. Outros pedidos devem ser enviados ao Headquarters, DMAP, ATTN: SGP. Destina-se somente para uso oficial.

DESIGNACION DE 100 METROS. 1. Use the letters that identify the 100-meter contours to identify the 100-meter contours. 2. Use the letters that identify the 100-meter contours to identify the 100-meter contours. 3. Use the letters that identify the 100-meter contours to identify the 100-meter contours.

ROADS. CAMINOS. ESTRADAS DE RODAGEM. All weather, hard surface. Transitable todo año, superficie dura. Transitable todo año, revestimiento sólido o liguero. Two lanes wide. Dos o más vías de ancho. Una vía de ancho. Una vía de largura.

RAILROADS. FERROCARRILES. ESTRADAS DE FERRO. Cart track. Camino de herradura. Caminho para carretas. Trail (footpath). Sendero. Trilho. Single. Double. Via simple. Dos Vías. Via simple. Via dupla ou múltipla. On this graphic a lane is generally considered as being 8 feet (2.5 meters) in width. Neste gráfico considera-se que uma via tem de 8 pés (2,5 metros) de largura. Road classification should be referred to with caution. Road classification should be referred to with caution. REFERIR-SE COM CUIDADO À CLASSIFICAÇÃO DE CAMINHOS. VÉR A CLASSIFICAÇÃO DAS ESTRADAS DE RODAGEM COM PRECAUÇÃO. THE REPRESENTATION OF BOUNDARIES IS NOT NECESSARILY AUTHORITATIVE. A REPRESENTAÇÃO DE LIMITES NÃO É NECESSARIAMENTE ORÇAL. Caution: Not all telephone and electric service lines are shown. Precaución: No se muestran todas las líneas telefónicas o todas las líneas de servicio eléctrico. Precaução: Não mostram-se todas as linhas telefônicas ou elétricas.