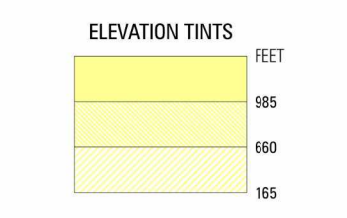


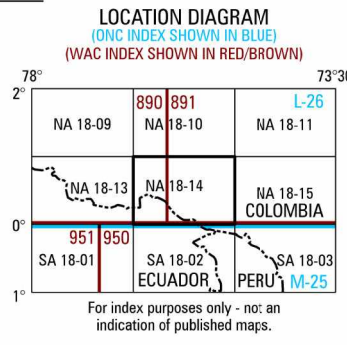
SERIES 1501 AIR SHEET NA 18-14 EDITION 3



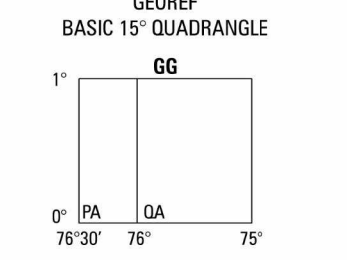
RELIABILITY OF THIS GRAPHIC (as determined by standard practices)

Table with 3 columns: Year (1991, 1990, 1983, 1984), Plotting Accuracy, and Assurance. Includes horizontal and vertical datum information.

GLOSSARY table listing geographical terms like 'Aproximado, Apro.' and 'Chimenea' with their corresponding symbols and descriptions.



CONVERSION OF ELEVATIONS table with columns for FEET and METERS, providing conversion factors for various elevation ranges.



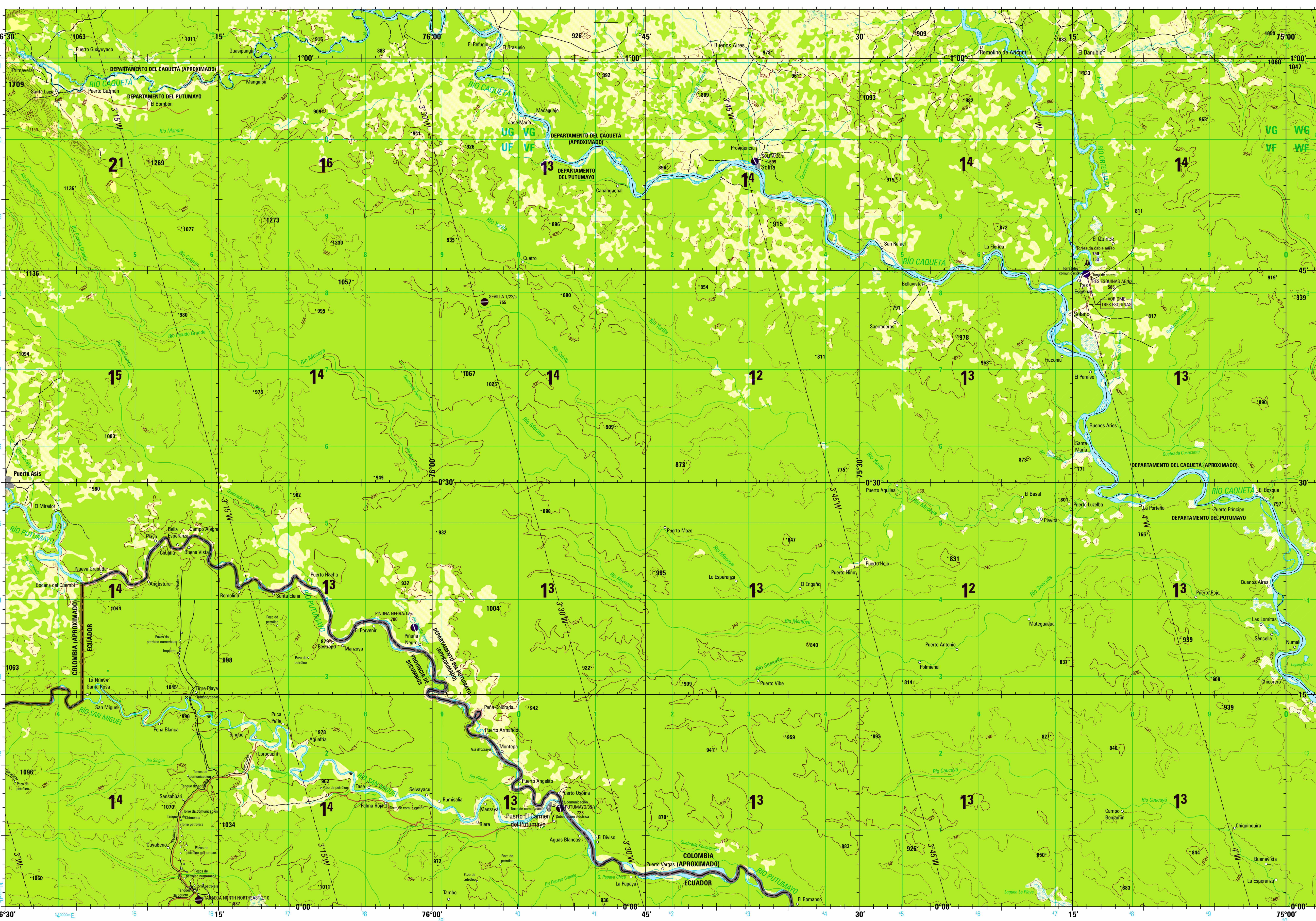
CAUTION AIR INFORMATION CURRENT THROUGH FEB 2005. Includes text about NOTAMS and flight information publications.

LINES OF EQUAL MAGNETIC VARIATION FOR 2005. (Annual rate of change 7' increase). Includes Spanish translation.

CAUTION Vertical dimensions, including spot heights, have been extracted from the most reliable sources available.

ATTENTION THIS CHART CONTAINS MAXIMUM ELEVATION FIGURES (MEF). Includes a scale of 1:250,000 and the title 'PUERTO EL CARMEN DEL PUTUMAYO, ECUADOR; COLOMBIA'.

SERIES 1501 AIR SHEET NA 18-14 EDITION 3



Prepared and published by the National Geospatial-Intelligence Agency. Prepared y publicado por la National Geospatial-Intelligence Agency.

Table with 2 columns: SAMPLE 1,000 METER GRID SQUARE and REFERENCIA DE 1,000 METROS CUADRO. Includes instructions for grid usage.

Table with 2 columns: ROADS — CAMINOS and RAILROADS — FERROCARRILES. Describes symbols for different road and rail types.

Table with 2 columns: BOUNDARIES — LÍMITES and VEGETATION — VEGETACIÓN. Describes symbols for international boundaries and different types of vegetation.

Table with 2 columns: AERODROMES (Military or Civil) and VISUAL AIDS AND OBSTRUCTIONS. Describes symbols for airports, heliports, and various visual aids.

Table with 2 columns: RADIO FACILITIES and TERRAIN ELEVATIONS — ELEVACIONES DEL TERRENO. Describes symbols for radio stations and terrain features.

JOINT OPERATIONS GRAPHIC (AIR)

SCALE 1:250,000 ESCALA 1:250,000

CONTOUR INTERVAL APPROXIMATELY 165 FEET EQUIDISTANCIA APROXIMADA DE LAS CURVAS DE NIVEL 165 PIES. SUPPLEMENTARY CONTOUR INTERVAL APPROXIMATELY 85 FEET EQUIDISTANCIA APROXIMADA DE LAS CURVAS DE NIVEL SUPLEMENTARIAS 85 PIES.

BLUE NUMBERED LINES INDICATE THE 1,000 METER UNIVERSAL TRANSVERSE MERCATOR GRID ZONE. Includes information about the coordinate system and grid lines.

© COPYRIGHT 2007 BY THE UNITED STATES GOVERNMENT. NO COPYRIGHT CLAIMED UNDER TITLE 17, U.S.C.

ELEVATIONS IN FEET ELEVACIONES EN PIES

Table with 2 columns: ELEVATIONS IN FEET and ELEVACIONES EN PIES. Lists various elevation symbols and their corresponding values.

ELEVATIONS IN FEET ELEVACIONES EN PIES

Table with 2 columns: ELEVATIONS IN FEET and ELEVACIONES EN PIES. Lists various elevation symbols and their corresponding values.

NOTES — NOTAS

Powerlines are shown except within populated places. Other obstructions are shown if they are 150 feet or more above ground level. See caution note.

