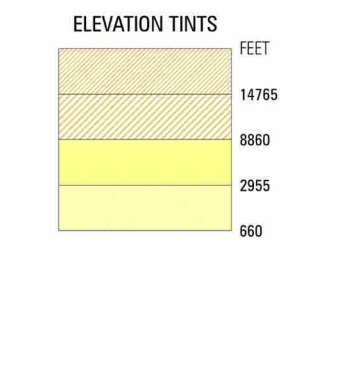


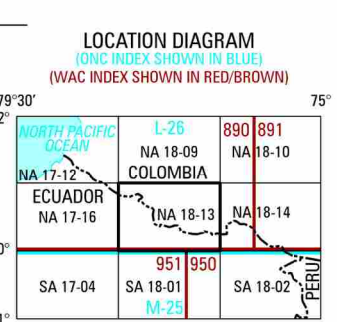
SERIES 1501 AIR SHEET NA 18-13 EDITION 2



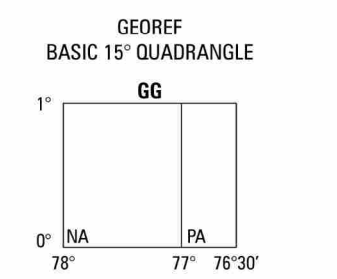
RELIABILITY OF THIS GRAPHIC (as determined by standard practices) table with columns for year and reliability percentage.

Horizontal Datum: World Geodetic System 1984 Vertical Datum: Mean Sea Level Transverse Mercator Projection

GLOSSARY table listing various geographical features and their symbols.



CONVERSION OF ELEVATIONS table with columns for feet and meters.



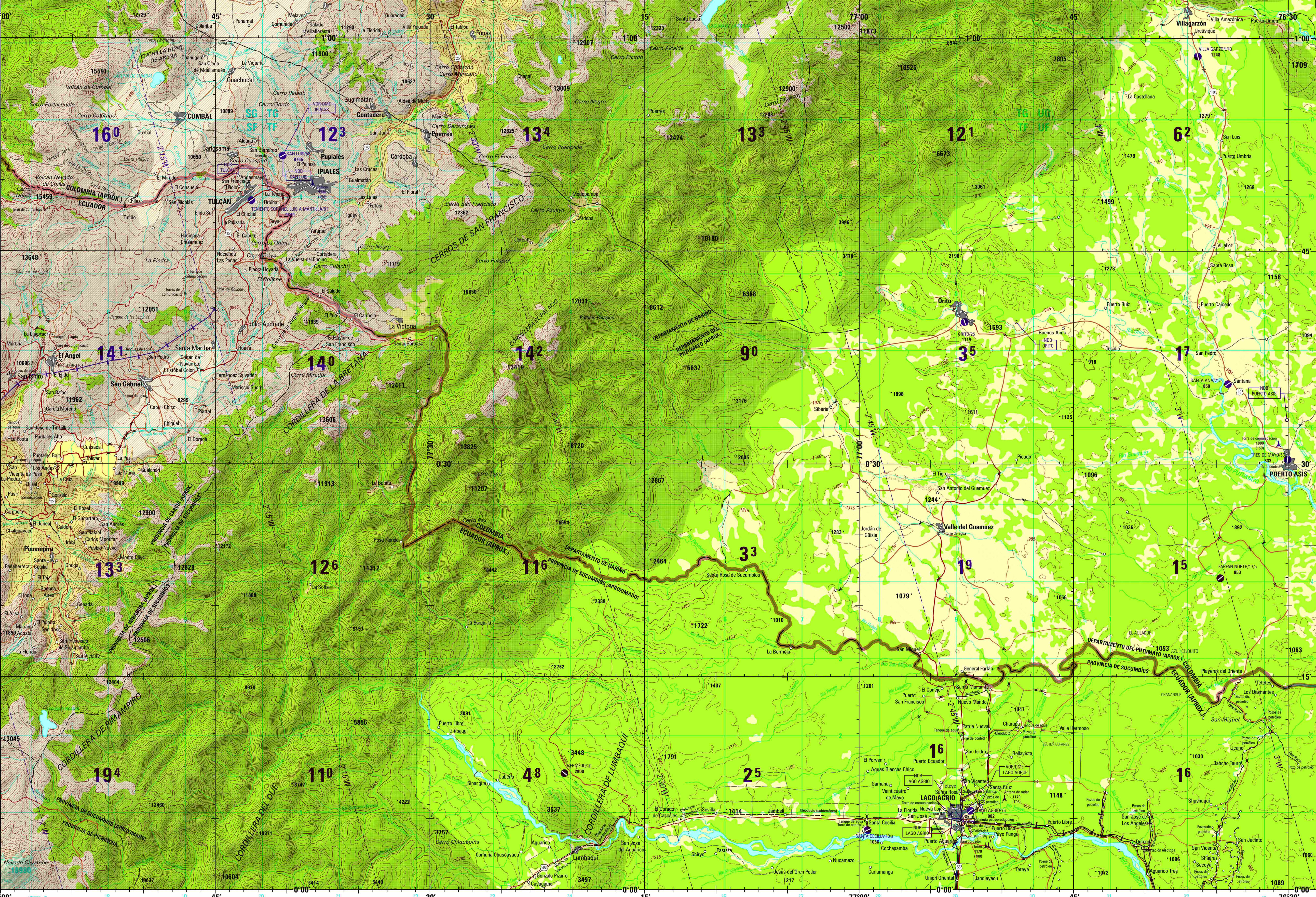
CAUTION AIR INFORMATION CURRENT THROUGH FEBRUARY 2007. Consult NOTAMS and Flight Information Publications for the latest information.

CAUTION Vertical obstructions, including powerlines, have been omitted from this map.

ATTENTION THIS CHART CONTAINS MAXIMUM ELEVATION FIGURES (MEF). The Maximum Elevation Figure shows the spot height in feet of the highest terrain feature.

SCALE 1:250,000 TULCAN, ECUADOR, COLOMBIA

SERIES 1501 AIR SHEET NA 18-13 EDITION 2



JOINT OPERATIONS GRAPHIC (AIR)

SCALE 1:250,000 ESCALA 1:250,000

CONTOUR INTERVAL APPROXIMATELY 330 FEET EQUIDISTANCIA APROXIMADA DE LAS CURVAS DE NIVEL 330 PIES

SUPPLEMENTARY CONTOUR INTERVALS AT APPROXIMATELY 85 AND 165 FEET EQUIDISTANCIA APROXIMADA DE LAS CURVAS DE NIVEL SUPLEMENTARIAS 85 Y 165 PIES

USERS SHOULD REFER TO CORRECTIONS, ADDITIONS, AND COMMENTS TO THE NSA ENTERPRISE SERVICE DESK...

Prepared and published by the National Geospatial-Intelligence Agency. Includes map information and reliability diagram.

ROADS - CAMINOS, RAILROADS - FERROCARRILES, BOUNDARIES - LIMITES, VEGETATION - VEGETACION. Legend for road types, railroads, and vegetation.

LEGEND for symbols and colors used in the map, including terrain, roads, and vegetation.

AERODROMES (Military or Civil), HELIPORTS, CONTROLLED AIRSPACE. Legend for airports and flight restrictions.

VISUAL AIDS AND OBSTRUCTIONS, RADIO FACILITIES, TERRAIN ELEVATIONS. Legend for navigation aids and terrain features.

NOTES - NOTAS. Additional information and cautions for users of the graphic.

NSN 764101 4098765 NGA Form No. 1501ANAT813