

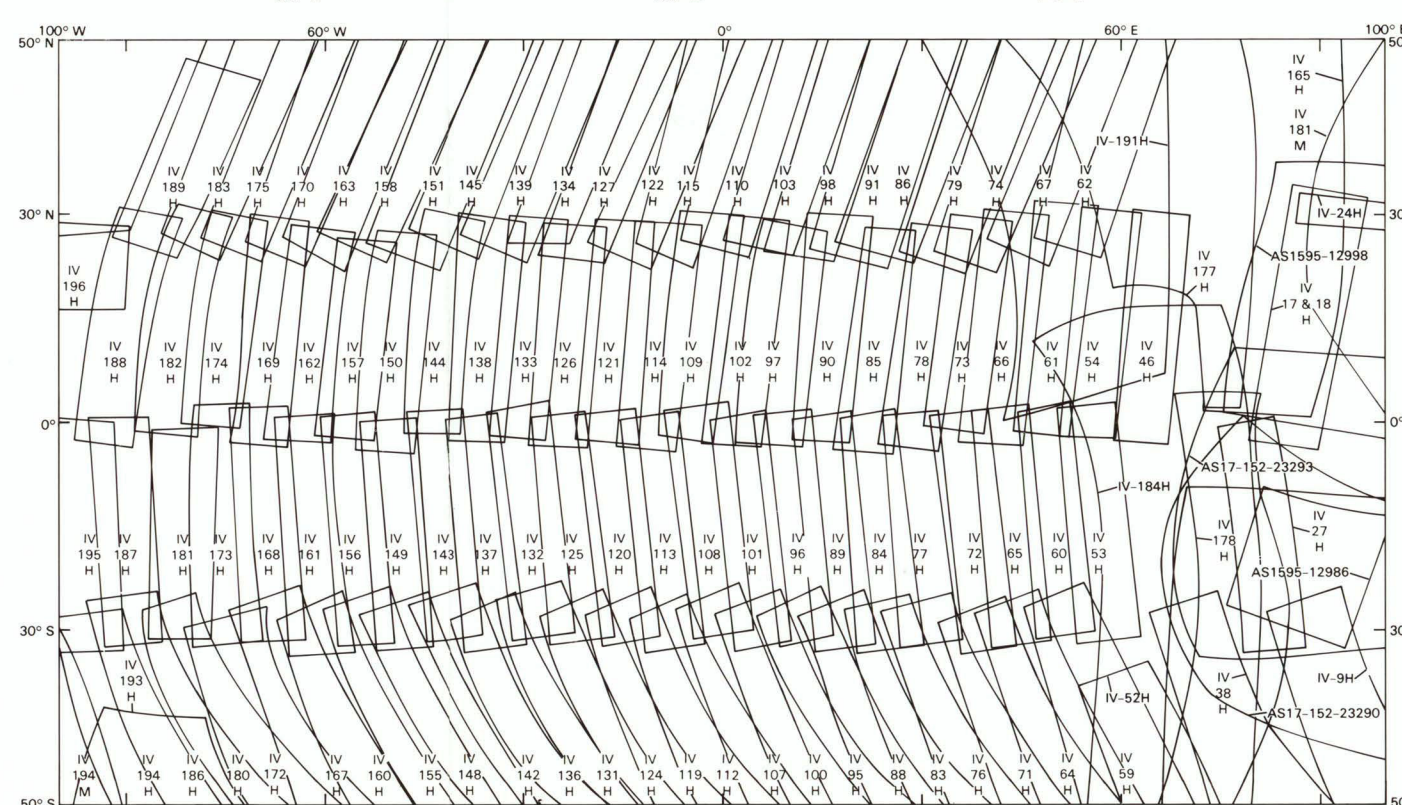
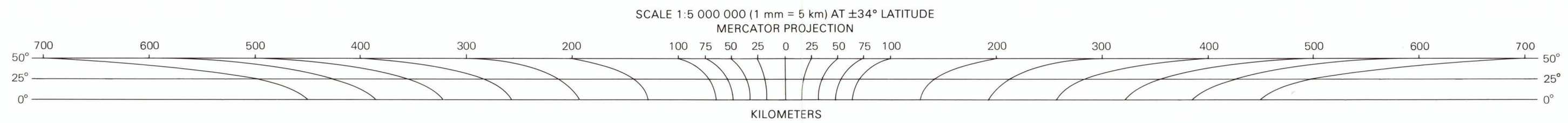
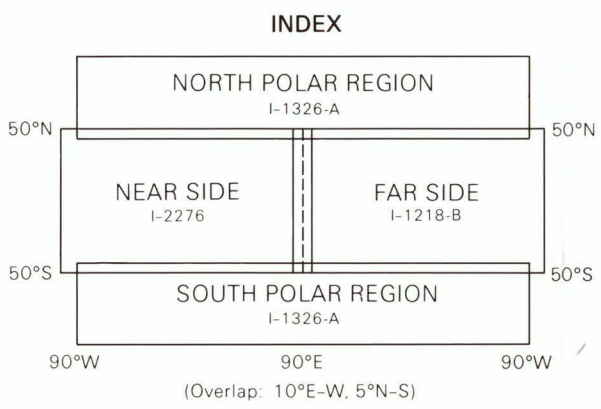
NOTES ON BASE
The lunar surface features shown on this map were based primarily on pictures taken by Lunar Orbiter spacecraft. Data from Apollo orbital flights and the rectified lunar atlas (Whitaker and others, 1963) were also used. Interpretation and airbrush portrayal of the shaded relief are by Eric L. Blinn and Patricia M. Bridges.

PROJECTION
The Mercator and Polar Stereographic projections are used for this map series. The scale of the series is 1:5,000,000 at the equator and 1:5,000,000 at lat ±34° and at the poles. The projections have a common scale of 1:4,268,032 at lat ±45°.

CONTROL
Horizontal positions are tied to the Lunar Positional Reference of 1974 (Schinnerman, 1978). The evaluated accuracy of the system ranges from 1 to 16 km at 90% probability.

NOMENCLATURE
L 5M 0/0 R: Abbreviation for Moon, 1:5,000,000 series; center of sheet, lat 0°; long 0°; shaded relief map (R).

REFERENCES
Schinnerman, L.A., ed., 1975, Lunar cartographic dossier: U.S. Defense Mapping Agency Aerospace Center, St. Louis, Missouri, v. 1, sections 3.1, 10 and 3.4.63.
Whitaker, E.A., Kuiper, G.P., Hartmann, W.K., and Spradley, L.H., 1963, Rectified lunar atlas: Tucson, University of Arizona Press, 122 p.



Prepared on behalf of the Planetary Geology Program, Solar System Exploration Division,
Office of Space Sciences, National Aeronautics and Space Administration, under contract
W-15184.
Edited by David Menz, cartography by Bernita M. Bradley.
Manuscript approved for publication December 18, 1990.