

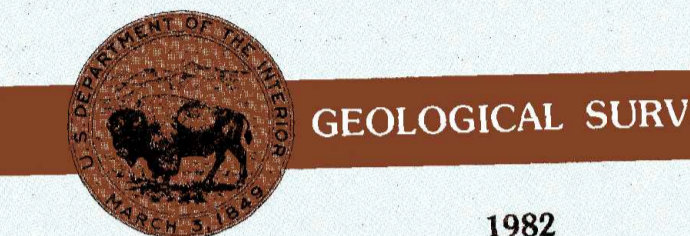
Watford City NORTH DAKOTA

1:100 000-scale metric
topographic map



30 X 60 MINUTE QUADRANGLE
SHOWING

- Contours and elevations in meters
- Highways, roads and other manmade structures
- Water features
- Woodland areas
- Geographic names



Produced by the United States Geological Survey compiled from USGS 1:250 000-scale topographic maps dated 1958-1978. Planimetry revised from aerial photographs taken 1980 and other source data. Revised information not field checked. Map edited 1982.

Projection and 10 000-meter grid, zone 13. Universal Transverse Mercator. 25 000-foot grid ticks based on North Dakota coordinate system, north and south zones. 1927 North American Datum. To place on the predicted North American Datum 1983 move the projection lines 2 meters north and 36 meters east. There may be private inholdings within the boundaries of the National or State reservations shown on this map.

CONTOUR INTERVAL 20 METERS
NATIONAL GEODETIC VERTICAL DATUM OF 1929
ELEVATIONS SHOWN TO THE NEAREST METER

THIS MAP COMPLIES WITH NATIONAL MAP ACCURACY STANDARDS

CONVERSION TABLE		DECLINATION DIAGRAM		ADJOINING MAPS				
Meters	Feet	Meters		1	2	3	4	5
1	3.2808	10°		1	2	3	4	5
2	6.5617	20°		6	7	8		
3	9.8425	30°						
4	13.1234	40°						
5	16.4042	50°						
6	19.6850	60°						
7	22.9658	70°						
8	26.2467	80°						
9	29.5275	90°						
10	32.8084	100°						

To convert meters to feet multiply by 3.2808
To convert feet to meters multiply by 0.3048

UTM grid convergence (GM) and 1983 magnetic declination (MD) at center of map. Diagram is approximate.

1 Colburnton
2 Wilton
3 Stanley
4 Sidney
5 Parkhill
6 Glendale
7 Gray Butte
8 Killdeer

FOR SALE BY U. S. GEOLOGICAL SURVEY, DENVER, COLORADO 80225
OR RESTON, VIRGINIA 22092

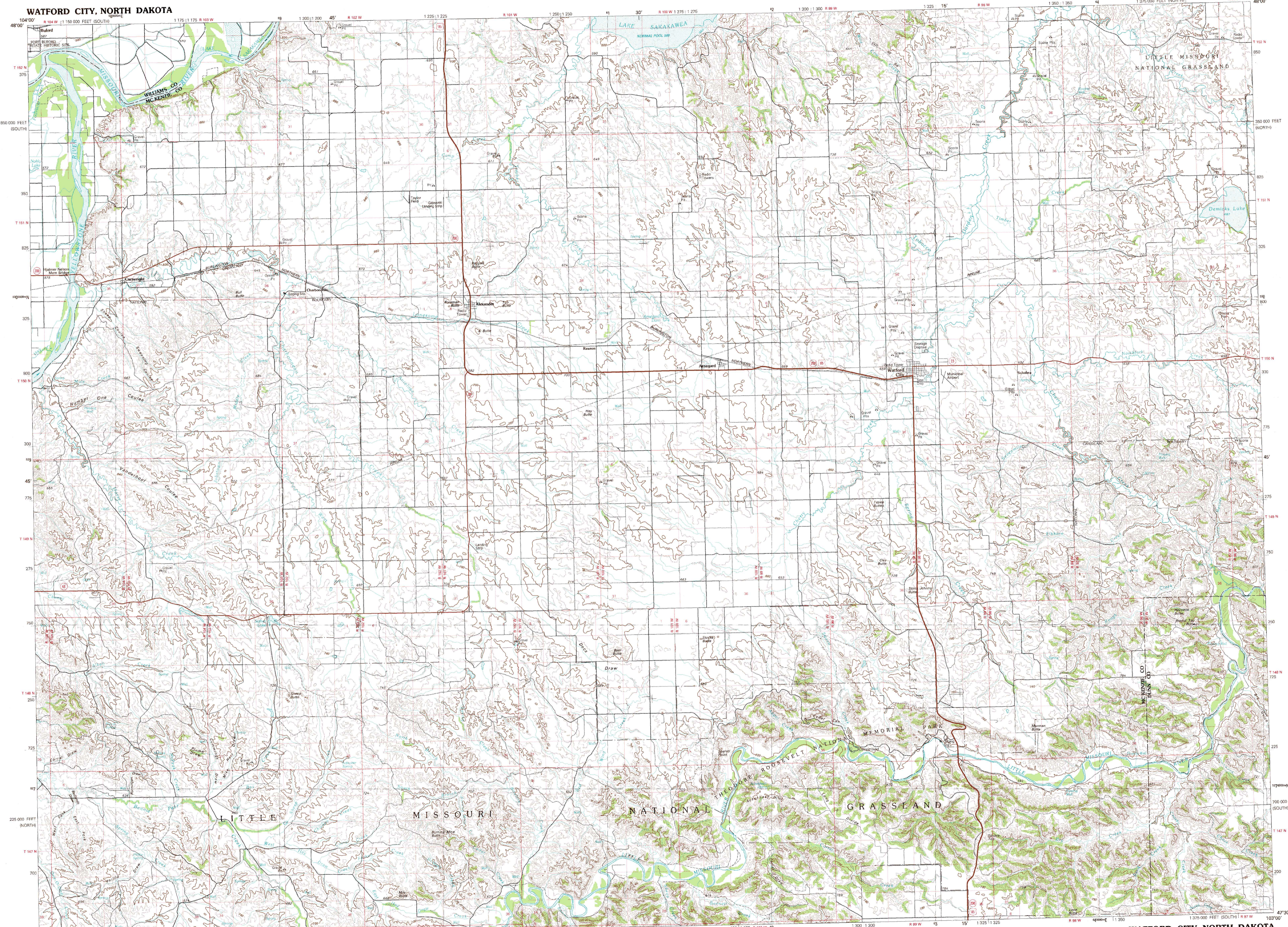
Topographic Map Symbols

- Primary highway, hard surface
- Secondary highway, hard surface
- Light duty road, principal street, hard or improved surface
- Other road or street, trail
- Route marker, interstate, U.S., State
- Railroad, standard gage, narrow gage
- Bridge, overpass, underpass
- Tunnel, road, railroad
- Built up area, mostly urban
- Airport, landing field, landing strip
- National boundary
- County boundary
- National or State reservation boundary
- Land grant boundary
- U.S. public lands survey, range, township, section
- Range, township, section line, projected
- Power transmission line, pipeline
- Dam, dam with lock
- Cemetery, building
- Windmill, water well, spring
- Mine shaft, oil or cave, mine, quarry, gravel pit
- Campground, picnic area, U.S. location monument
- Ruin, cliff dwelling
- Glaciated surface, stp, min, lvs, sand
- Contours, index, intermediate, supplementary
- Bathymetric contours, index, intermediate
- Stream, lake, perennial, intermittent
- Rapids, large and small, falls, large and small
- Area to be submerged, marsh, swamp
- Land subject to controlled inundation, woodland
- Scrub, mangrove
- Orchard, vineyard

A pamphlet describing topographic maps is available on request

WATFORD CITY, NORTH DAKOTA

30 X 60 MINUTE SERIES (TOPOGRAPHIC)



SCALE 1:100 000
1 CENTIMETER ON THE MAP REPRESENTS 1 KILOMETER ON THE GROUND
CONTOUR INTERVAL 20 METERS

WATFORD CITY, NORTH DAKOTA
47103-E1-TM-100
1982