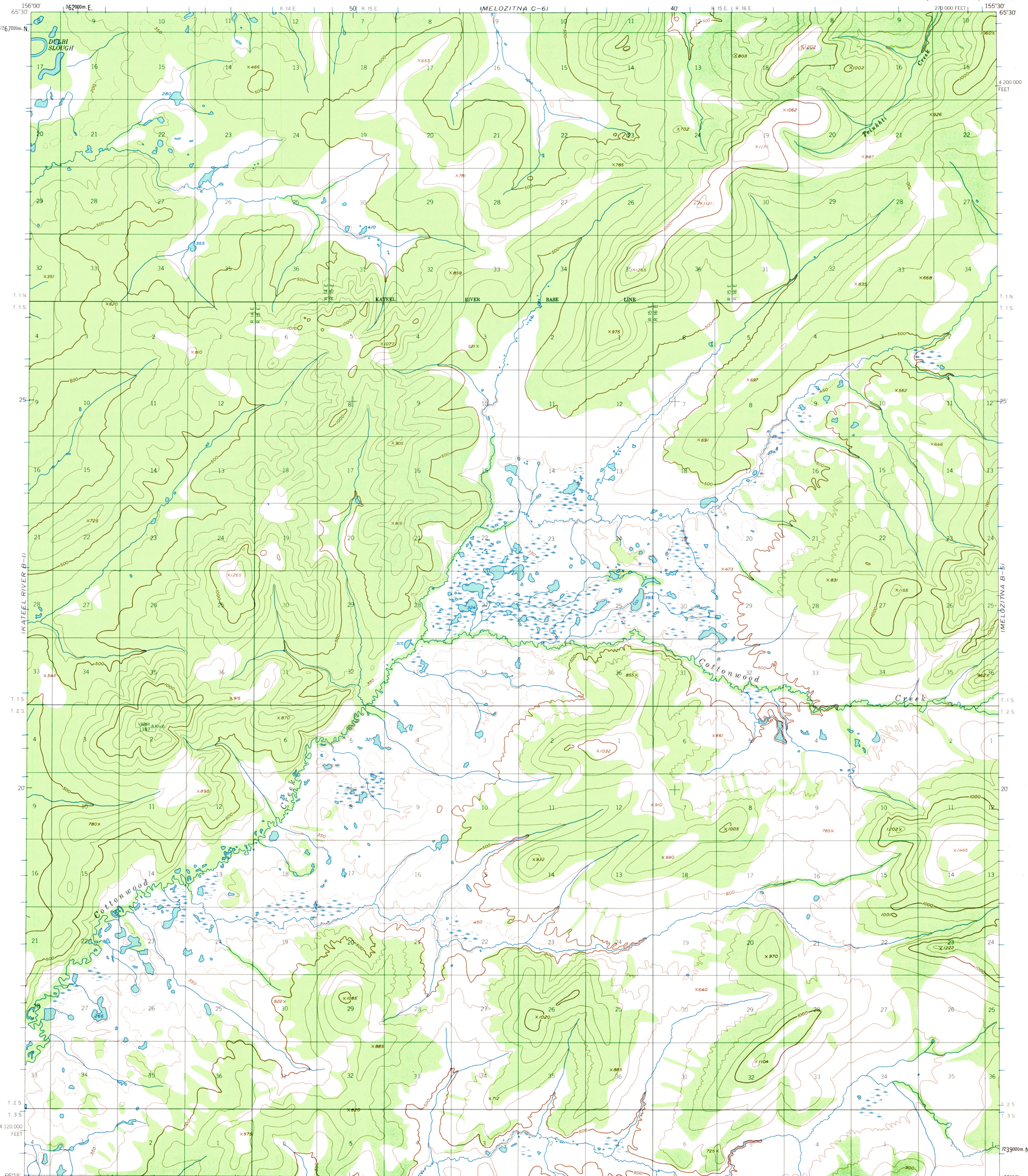


(KATEEL RIVER C-1)

(MELOZITNA C-9)

UNITED STATES
DEPARTMENT OF THE INTERIOR
GEOLOGICAL SURVEY

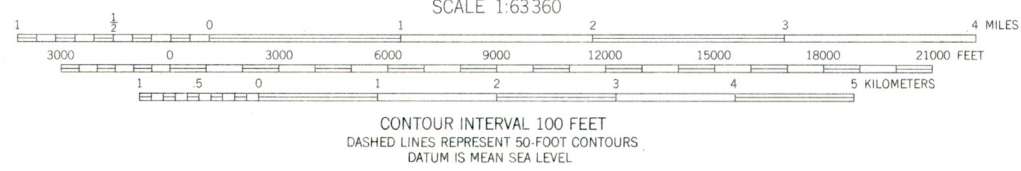
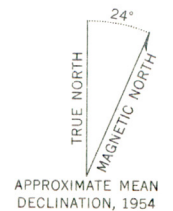
MELOZITNA (B-6) QUADRANGLE
ALASKA
1:63 360 SERIES (TOPOGRAPHIC)



(KATEEL RIVER A-1)

(MELOZITNA A-5)

Mapped, edited, and published by the Geological Survey
Control by USCE
Topography by photogrammetric methods from aerial photographs taken 1952, field annotated 1954. Map not field checked
Universal Transverse Mercator projection, 1927 North American datum
10,000-foot grid based on Alaska coordinate system, zone 5
1000-meter Universal Transverse Mercator grid ticks, zone 5, shown in blue
Land lines represent unsurveyed and unmarked locations predetermined by the Bureau of Land Management
Folios K-8, and K-11, Kateel River Meridian
Swamps, as portrayed, indicate only the wetter areas, usually of low relief, as interpreted from aerial photographs



ROAD CLASSIFICATION
No roads or trails in this area



FOR SALE BY U.S. GEOLOGICAL SURVEY
FAIRBANKS, ALASKA 99701, DENVER, COLORADO 80225, OR WASHINGTON, D.C. 20242
A FOLDER DESCRIBING TOPOGRAPHIC MAPS AND SYMBOLS IS AVAILABLE ON REQUEST

MELOZITNA (B-6), ALASKA
N6515-W1530/15X30
1954
MINOR REVISIONS 1966