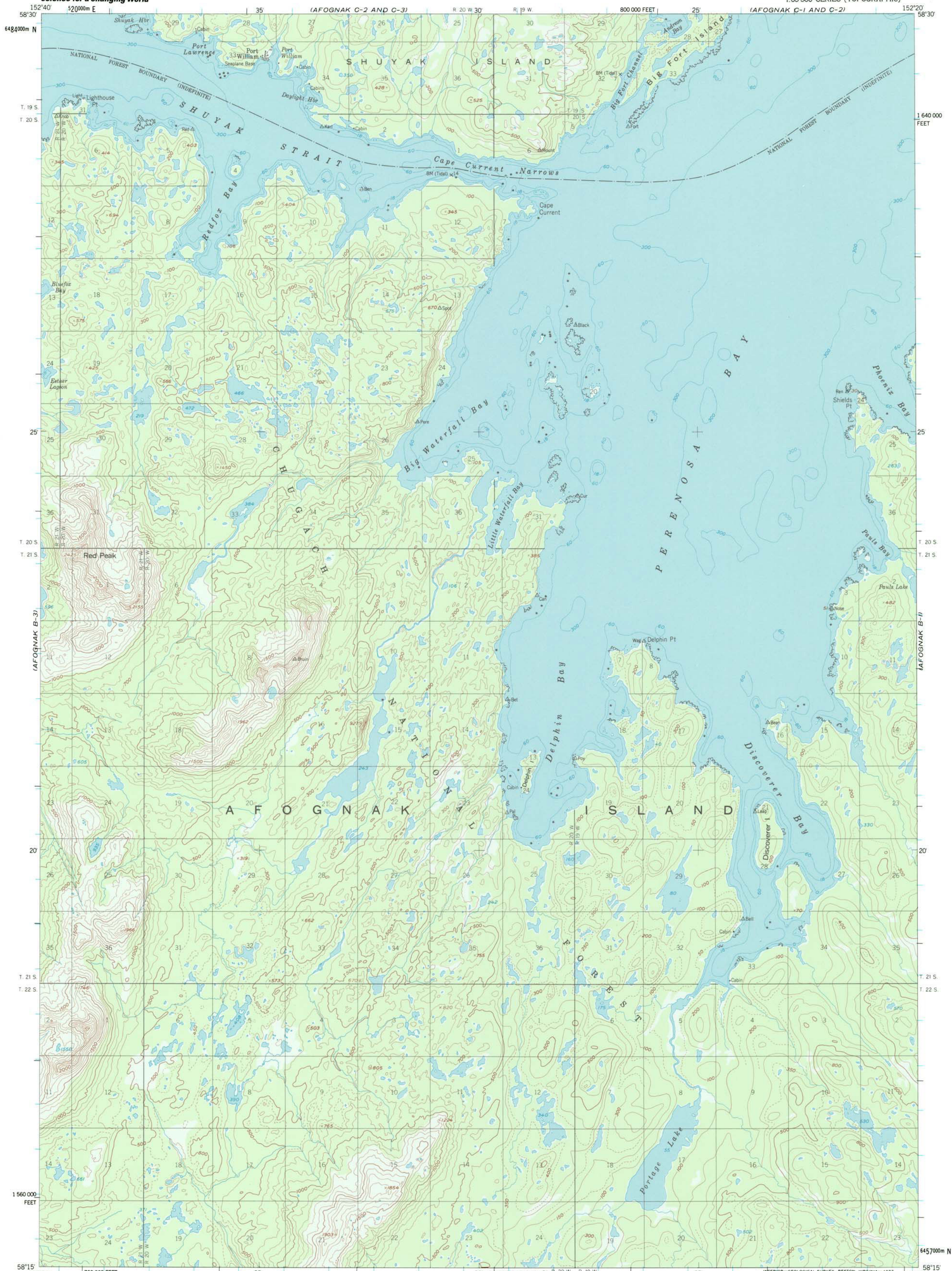


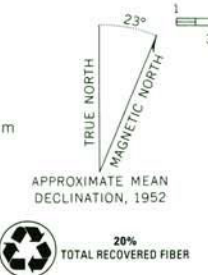


U.S. DEPARTMENT OF THE INTERIOR  
U.S. GEOLOGICAL SURVEY

AFOGNAK (B-2) QUADRANGLE  
ALASKA-KODIAK ISLAND BOROUGH  
1:63 360 SERIES (TOPOGRAPHIC)



Mapped, edited, and published by the Geological Survey  
Control by US&GS and USCE  
Topography by photogrammetric methods from aerial photographs  
taken 1951-1952. Map not field checked  
Selected hydrographic data compiled from US&GS Charts  
8533 and 8573 (1952). This information is not intended  
for navigational purposes  
Universal Transverse Mercator projection. 1927 North American datum  
10,000-foot grid based on Alaska coordinate system, zone 5  
1000-meter Universal Transverse Mercator grid ticks,  
zone 5, shown in blue  
Land lines represent unsurveyed and unmarked locations  
predetermined by the Bureau of Land Management  
Folio S-23, Seward Meridian



SCALE 1:63 360  
CONTOUR INTERVAL 100 FEET  
DASHED LINES REPRESENT 50 FOOT CONTOURS  
NATIONAL GEODETIC VERTICAL DATUM OF 1929  
DEPTH CURVES IN FEET-DATUM IS MEAN LOWER LOW WATER  
SHORELINE SHOWN REPRESENTS THE APPROXIMATE LINE OF MEAN HIGH WATER  
THE AVERAGE RANGE OF TIDE IS APPROXIMATELY 9 FEET



ROAD CLASSIFICATION  
Trails  
AFOGNAK (B-2), ALASKA  
N5815-W15220/15X20  
1952  
MINOR REVISIONS 1969

FOR SALE BY U.S. GEOLOGICAL SURVEY, P.O. BOX 25286, DENVER, COLORADO 80225  
A FOLDER DESCRIBING TOPOGRAPHIC MAPS AND SYMBOLS IS AVAILABLE ON REQUEST

