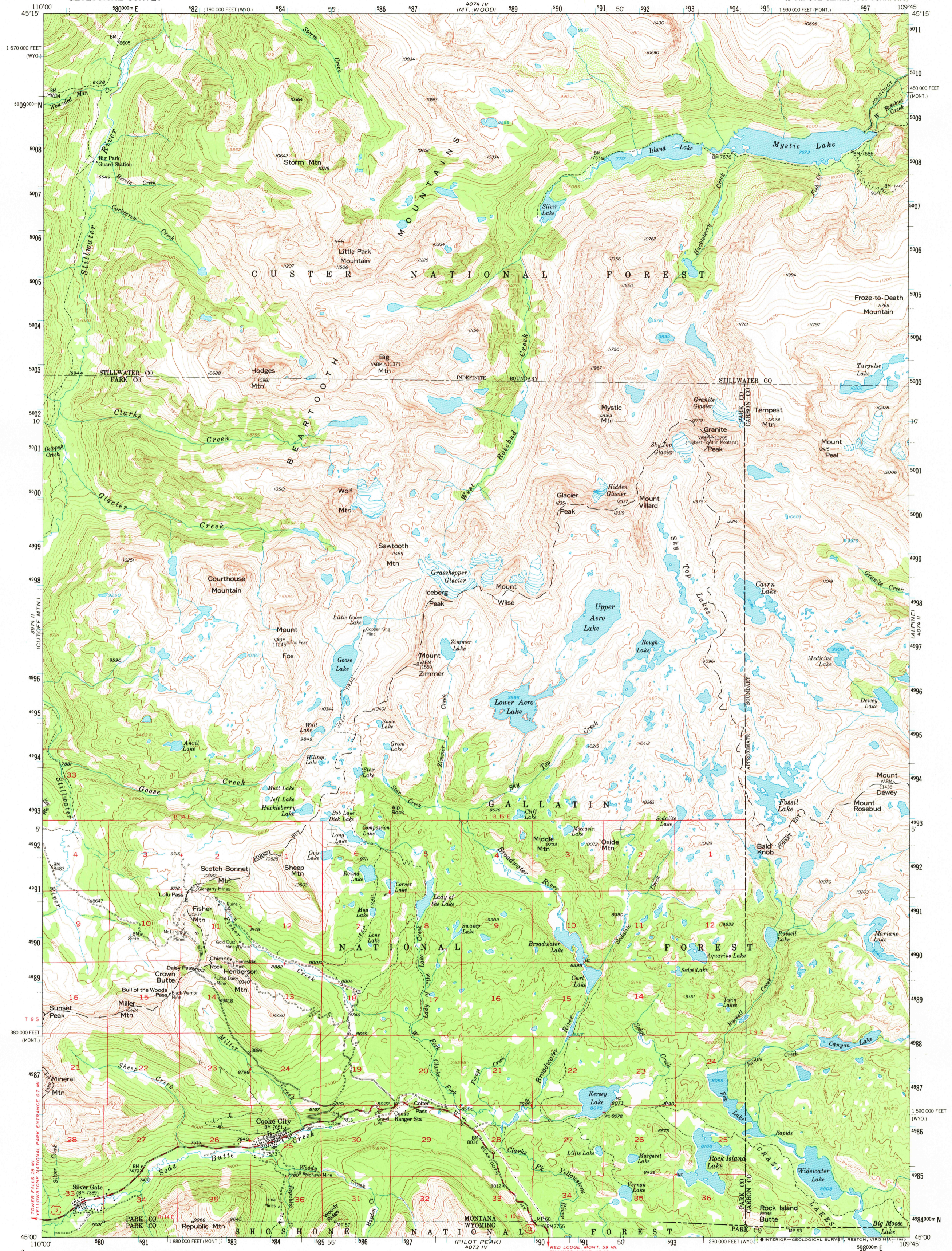


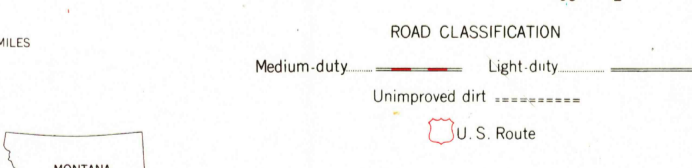
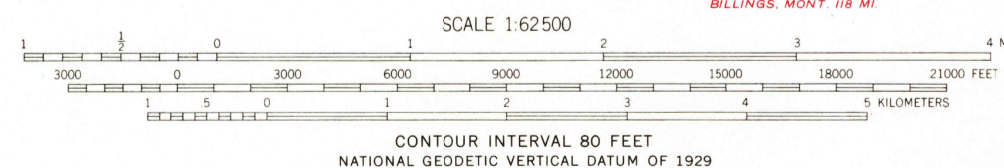
UNITED STATES  
DEPARTMENT OF THE INTERIOR  
GEOLOGICAL SURVEY

COOKE CITY QUADRANGLE  
MONTANA-WYOMING  
15 MINUTE SERIES (TOPOGRAPHIC)



Mapped, edited, and published by the Geological Survey as part of the Department of the Interior program for the development of the Missouri River Basin Control by USGS and USC&GS  
Topography from aerial photographs by photogrammetric methods  
Aerial photographs taken 1949 and 1951. Field check 1956

Polyconic projection, 1927 North American datum  
10,000-foot grid based on Montana coordinate system, south zone and Wyoming coordinate system, west central zone  
1000-meter Universal Transverse Mercator grid ticks, zone 12, shown in blue  
Land lines unsurveyed except in T 9 S-Rs 14 and 15 E  
Unchecked elevations are shown in brown  
To place on the predicted North American Datum 1983 move the projection lines 10 meters north and 58 meters east  
There may be private inholdings within the boundaries of the National or State reservations shown on this map



THIS MAP COMPLIES WITH NATIONAL MAP ACCURACY STANDARDS  
FOR SALE BY U.S. GEOLOGICAL SURVEY, DENVER, COLORADO 80225, OR RESTON, VIRGINIA 22092  
A FOLDER DESCRIBING TOPOGRAPHIC MAPS AND SYMBOLS IS AVAILABLE ON REQUEST

COOKE CITY, MONT.-WYO.  
N4500-W10945/15  
1956  
DMA 4074 III-SERIES V794

NOV 17 1980  
7500