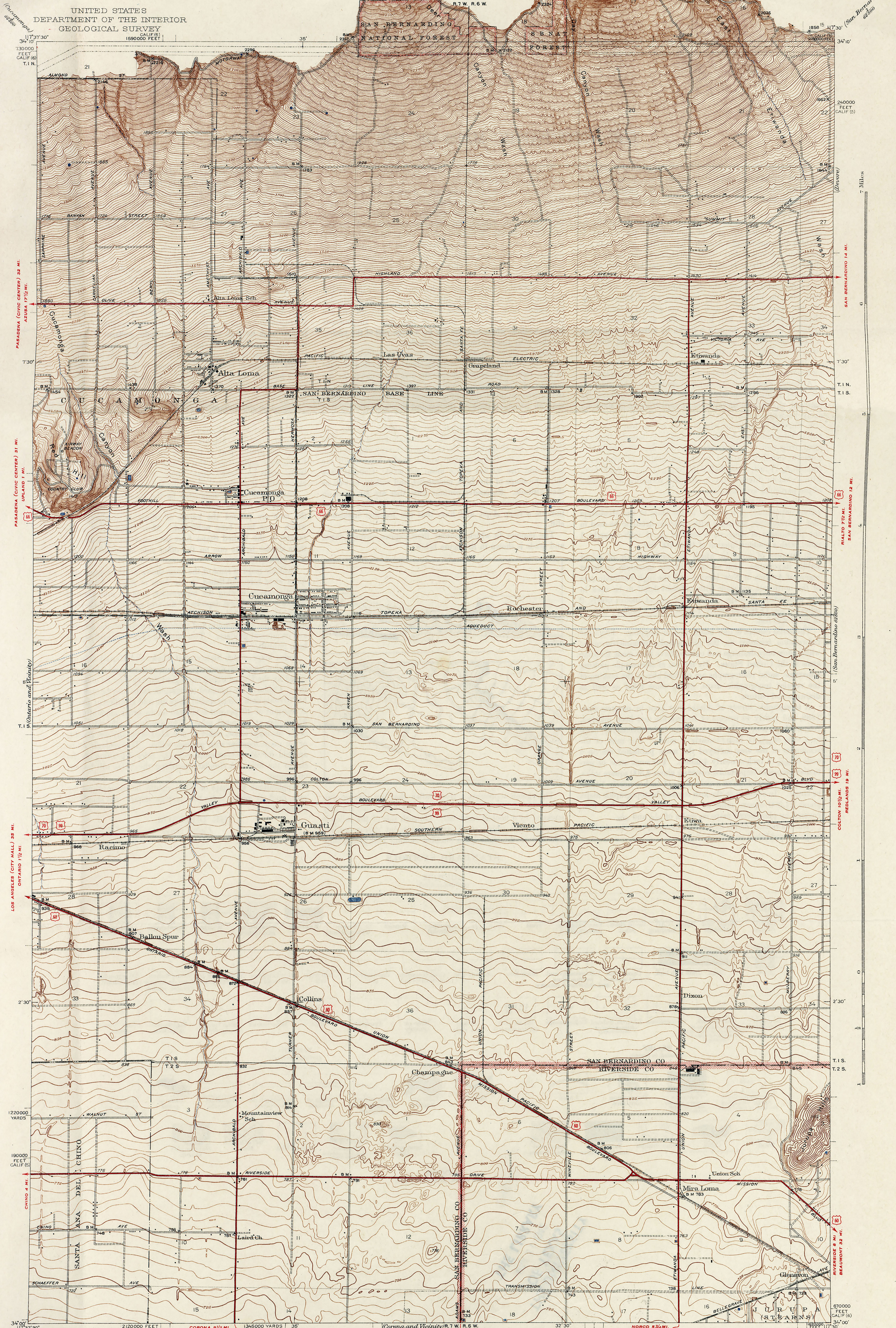


SAN GABRIEL MOUNTAINS

CALIFORNIA
GUASTI AND VICINITY

UNITED STATES
DEPARTMENT OF THE INTERIOR
GEOLOGICAL SURVEY



Scale 1:62,500
1 Mile
5000 2500 0 2500 5000 Feet
1 Kilometer
Contour interval 5 feet
Datum is mean sea level

ROUTES USUALLY TRAVELED
HARD IMPERVIOUS SURFACES
OTHER SURFACE IMPROVEMENTS
1941
U. S. ROUTE
CALIF. STATE ROUTE
191

Topography by R.R. Monbeck, W.B. Upton, J.C. and R.G. Stevenson
Surveyed in 1933

Guasti and vicinity, Calif.
Edition of 1941
N34-00-W11730/1.5 X 10