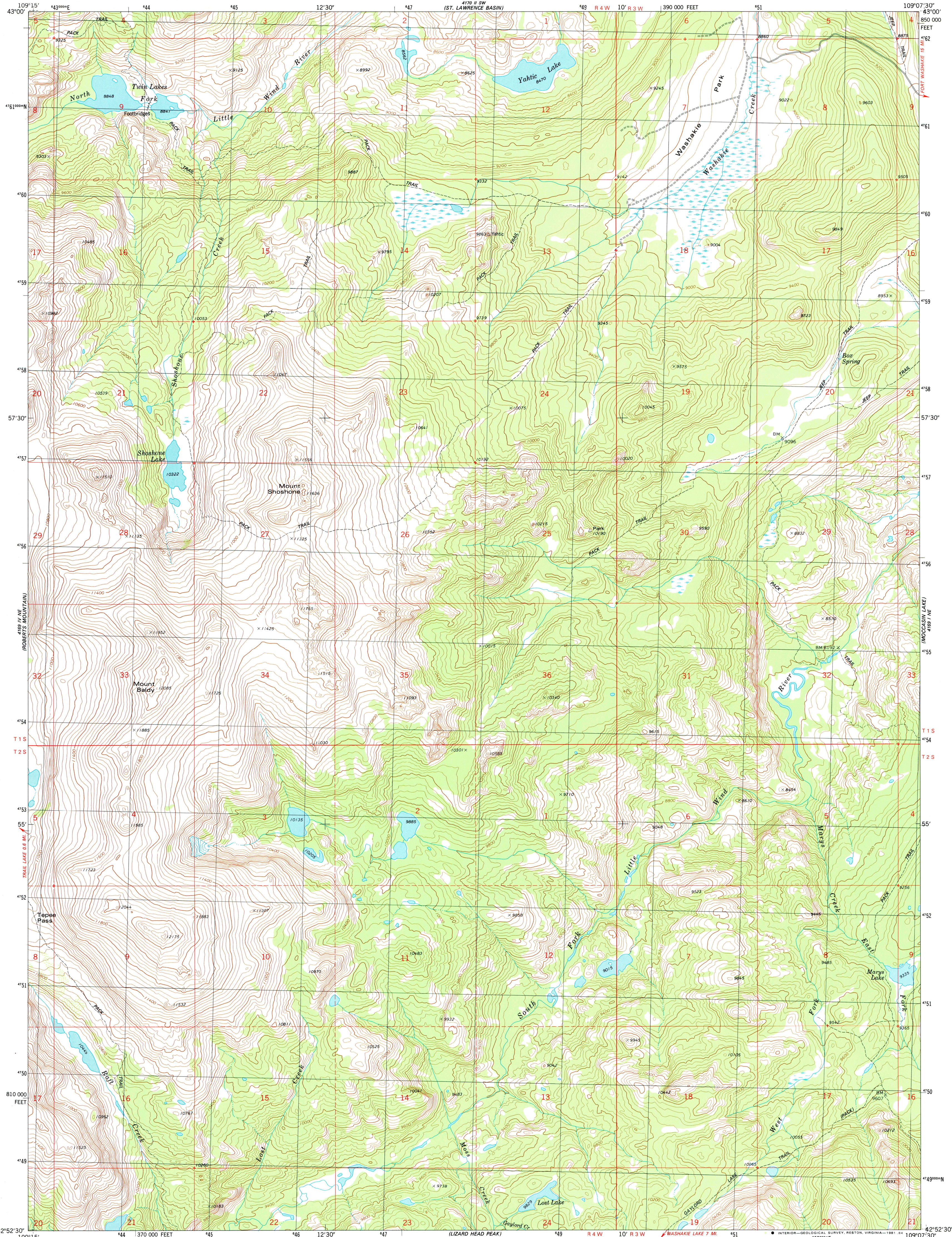


UNITED STATES
DEPARTMENT OF THE INTERIOR
GEOLOGICAL SURVEY

WASHAKIE PARK QUADRANGLE
WYOMING—FREMONT CO.
7.5 MINUTE SERIES (TOPOGRAPHIC)
NW/4 MOCCASIN LAKE 15' QUADRANGLE



Mapped, edited, and published by the Geological Survey

Control by USGS and NOS/NOAA

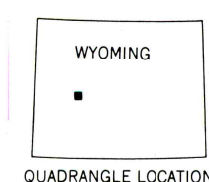
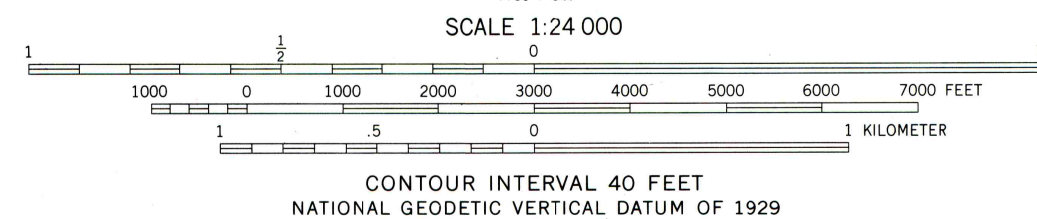
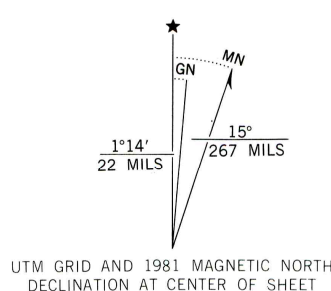
Topography by photogrammetric methods from aerial photographs taken 1974. Field checked 1976. Map edited 1981

Projection and 10,000-foot grid ticks: Wyoming coordinate system, west central zone transverse Mercator 1000-meter Universal Transverse Mercator grid, zone 12 1927 North American datum

To place on the predicted North American Datum 1983 move the projection lines 9 meters north and 57 meters east as shown by dashed corner ticks

Entire area lies within the boundary of the Wind River Indian Reservation

There may be private inholdings within the boundaries of the National or State reservations shown on this map



ROAD CLASSIFICATION

Primary highway, hard surface	Light-duty road, hard or improved surface
Secondary highway, hard surface	Unimproved road
Interstate Route	U. S. Route
	State Route

THIS MAP COMPLIES WITH NATIONAL MAP ACCURACY STANDARDS
FOR SALE BY U. S. GEOLOGICAL SURVEY, DENVER, COLORADO 80225, OR RESTON, VIRGINIA 22092
A FOLDER DESCRIBING TOPOGRAPHIC MAPS AND SYMBOLS IS AVAILABLE ON REQUEST

WASHAKIE PARK, WYO.
NW/4 MOCCASIN LAKE 15' QUADRANGLE
N4252.5—W10907.5/7.5

1981

DMA 4169 1 NW—SERIES V874