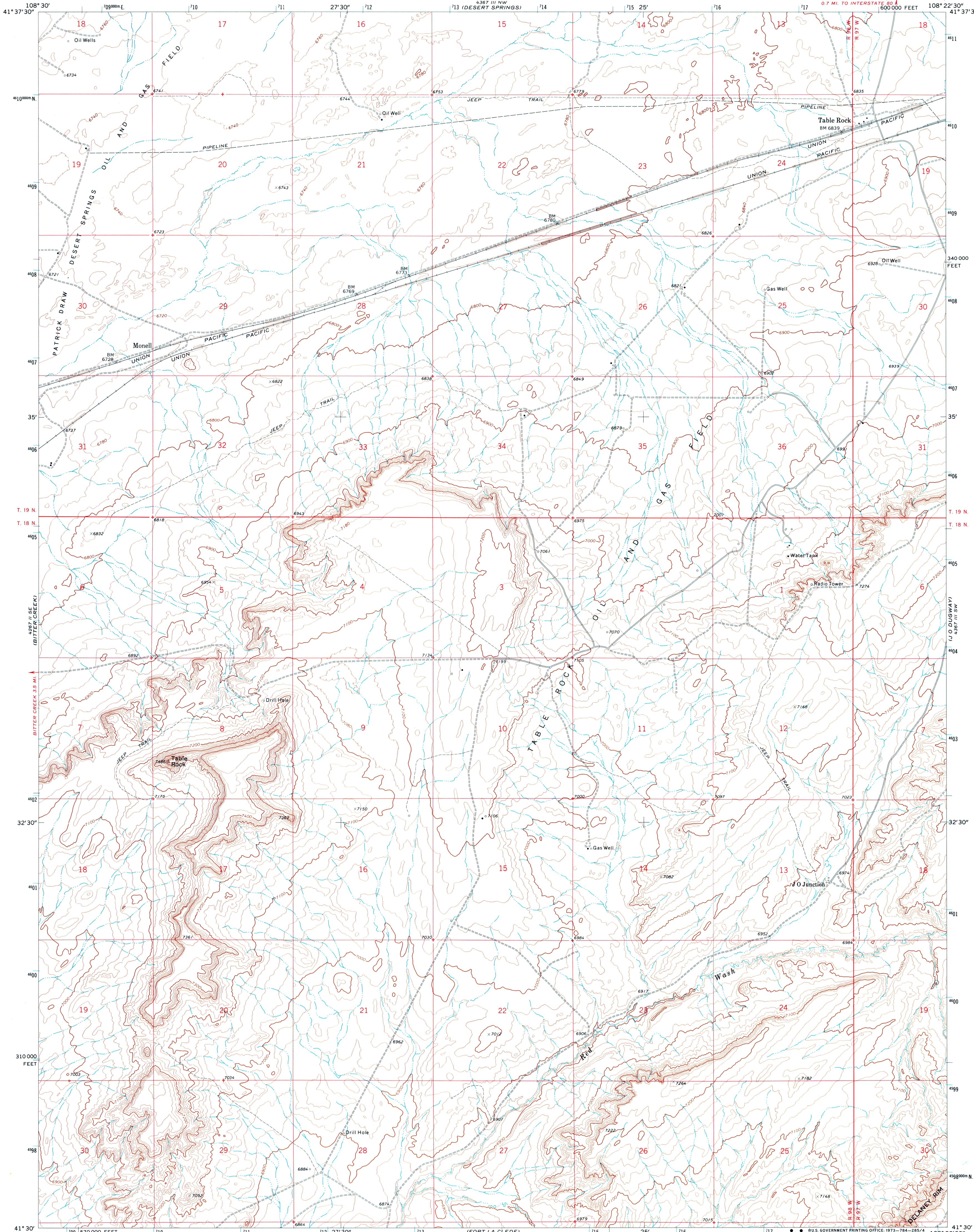
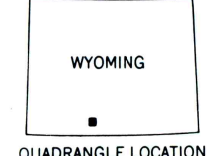
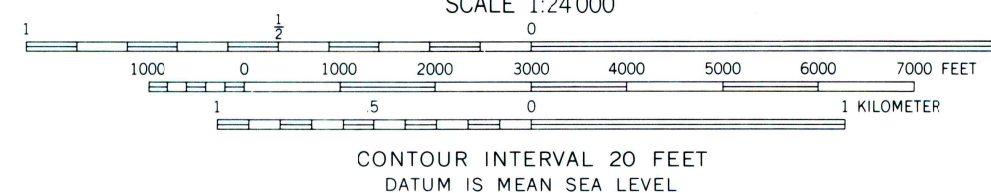
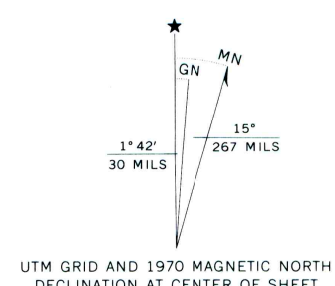


UNITED STATES
DEPARTMENT OF THE INTERIOR
GEOLOGICAL SURVEY

TABLE ROCK QUADRANGLE
WYOMING—SWEETWATER CO.
7.5 MINUTE SERIES (TOPOGRAPHIC)
0.7 MI. TO INTERSTATE 80



Mapped, edited, and published by the Geological Survey
Control by USGS and USC&GS
Topography by photogrammetric methods from aerial photographs taken 1968. Field checked 1970
Polyconic projection. 1927 North American datum, 10,000-foot grid based on Wyoming coordinate system, west central zone
1000-meter Universal Transverse Mercator grid ticks, zone 12, shown in blue



ROAD CLASSIFICATION

Primary highway, hard surface	Light-duty road, hard or improved surface
Secondary highway, hard surface	Unimproved road
Interstate Route	U. S. Route
	State Route

TABLE ROCK, WYO.
N 4130—W 10822.5/7.5

1970

AMS 4367 III SW—SERIES V874

THIS MAP COMPLIES WITH NATIONAL MAP ACCURACY STANDARDS
FOR SALE BY U. S. GEOLOGICAL SURVEY, DENVER, COLORADO 80225, OR WASHINGTON, D. C. 20242
A FOLDER DESCRIBING TOPOGRAPHIC MAPS AND SYMBOLS IS AVAILABLE ON REQUEST