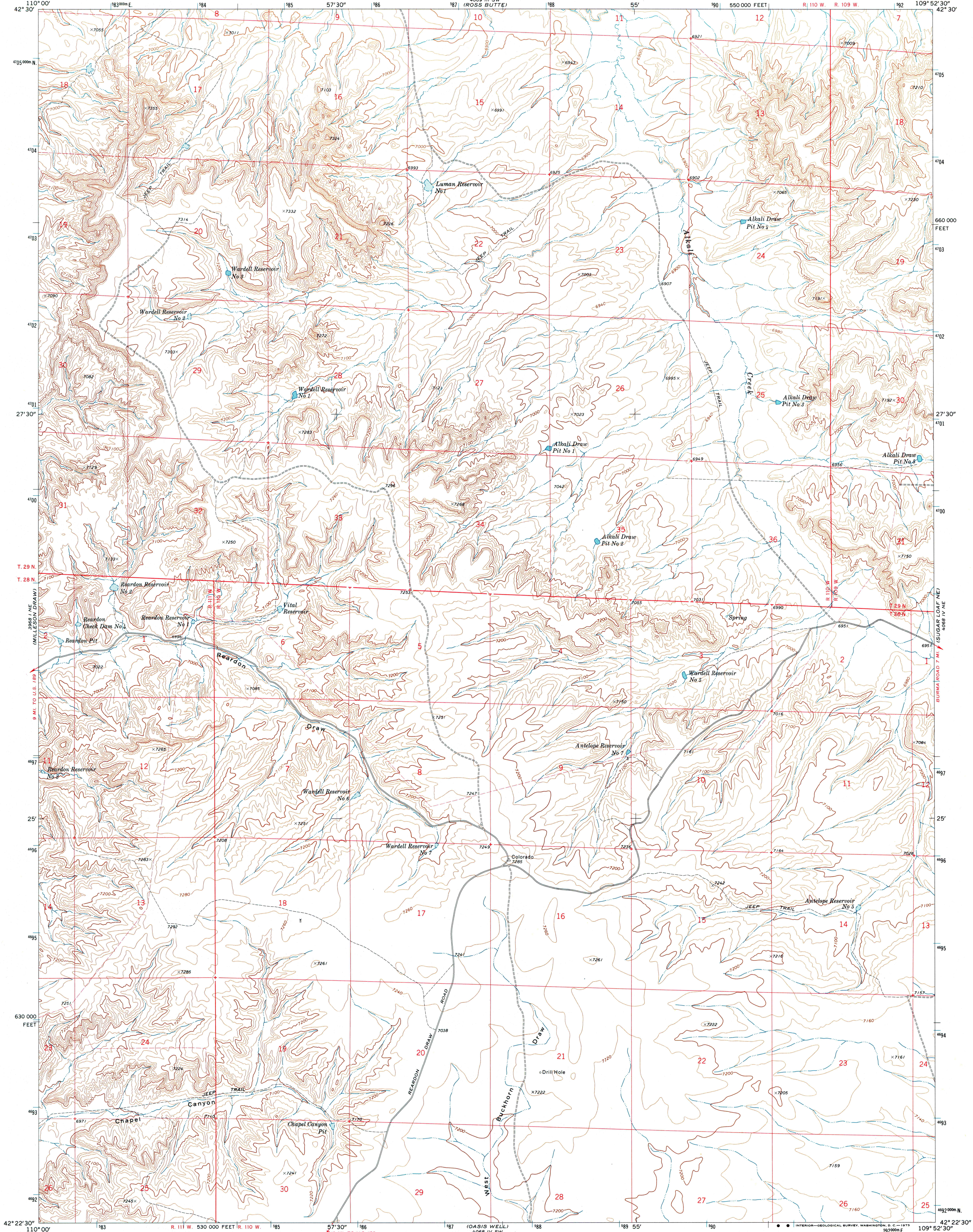
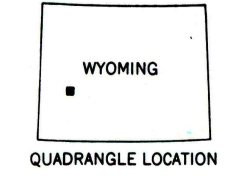
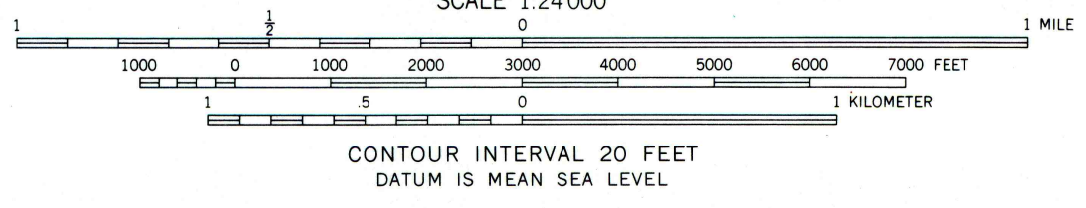
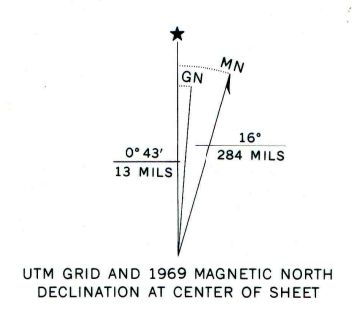


UNITED STATES
DEPARTMENT OF THE INTERIOR
GEOLOGICAL SURVEY

SUGAR LOAF NW QUADRANGLE
WYOMING—SUBLETTE CO.
7.5 MINUTE SERIES (TOPOGRAPHIC)



Mapped, edited, and published by the Geological Survey
Control by USGS and USC&GS
Topography by photogrammetric methods from aerial photographs taken 1968. Field checked 1969
Polyconic projection. 1927 North American datum
10,000-foot grid based on Wyoming coordinate system, west zone
1000-meter Universal Transverse Mercator grid ticks, zone 12, shown in blue
Fine red dashed lines indicate selected fence lines



ROAD CLASSIFICATION

Primary highway, hard surface	Light-duty road, hard or improved surface
Secondary highway, hard surface	Unimproved road
Interstate Route	U. S. Route
	State Route

THIS MAP COMPLIES WITH NATIONAL MAP ACCURACY STANDARDS
FOR SALE BY U. S. GEOLOGICAL SURVEY, DENVER, COLORADO 80225, OR WASHINGTON, D. C. 20242
A FOLDER DESCRIBING TOPOGRAPHIC MAPS AND SYMBOLS IS AVAILABLE ON REQUEST

SUGAR LOAF NW, WYO.
N4222.5-W10952.5/7.5
1969
AMS 4088 IV NW—SERIES V874