

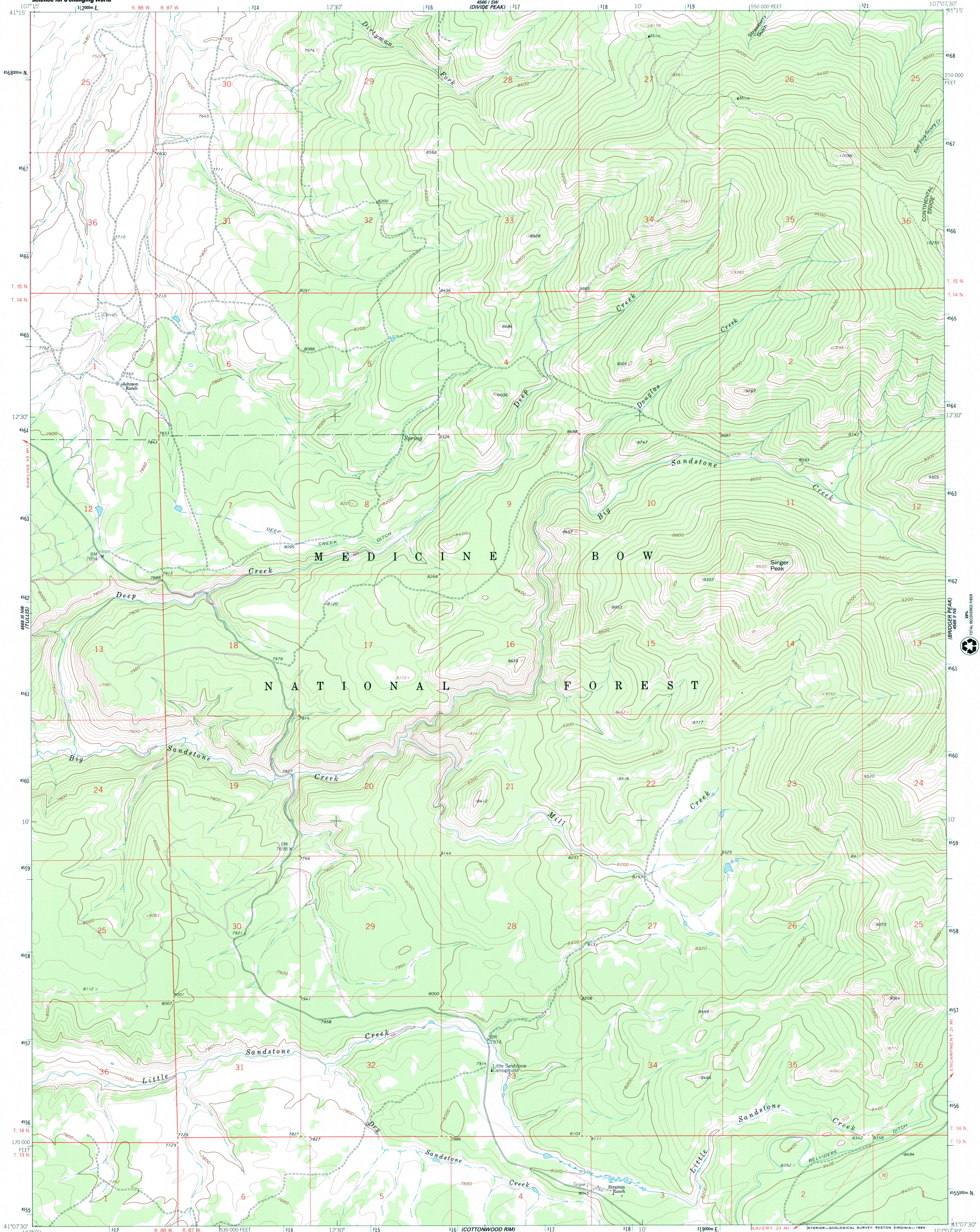
55817 SE
MC CARTY RANCH



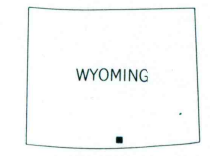
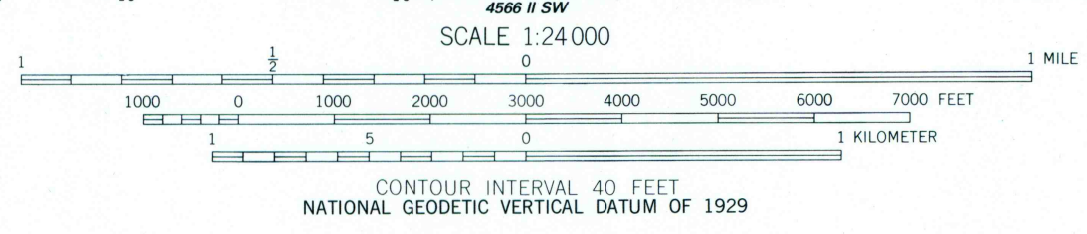
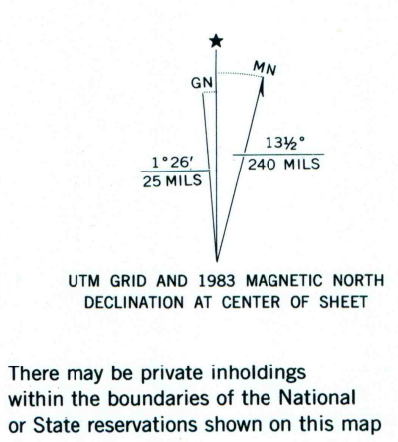
U.S. DEPARTMENT OF THE INTERIOR
U.S. GEOLOGICAL SURVEY

SINGER PEAK QUADRANGLE
WYOMING-CARBON CO.
7.5 MINUTE SERIES (TOPOGRAPHIC)

4581 SE
BRYANT HILL



Mapped, edited, and published by the Geological Survey as part of the Department of the Interior program for the development of the Missouri River Basin
Control by USGS and NOS/NOAA
Topography by photogrammetric methods from aerial photographs taken 1957. Field checked 1961
Polyconic projection. 1927 North American Datum
10,000-foot grid based on Wyoming coordinate system, east central zone
1000-meter Universal Transverse Mercator grid ticks, zone 13, shown in blue
Fine red dashed lines indicate selected fence lines
To place on the predicted North American Datum 1983 move the projection lines 7 meters north and 52 meters east as shown by dashed corner ticks



THIS MAP COMPLIES WITH NATIONAL MAP ACCURACY STANDARDS
FOR SALE BY U.S. GEOLOGICAL SURVEY, P.O. BOX 25286, DENVER, COLORADO 80225
A FOLDER DESCRIBING TOPOGRAPHIC MAPS AND SYMBOLS IS AVAILABLE ON REQUEST

Revisions shown in purple and woodland compiled from aerial photographs taken 1981 and other source data
Partial field check by U.S. Forest Service. Map edited 1983

SINGER PEAK, WYO.
41107-B2-TF-024
1961
PHOTOREVISED 1983
DMA 4566 11 NW-SERIES V874

