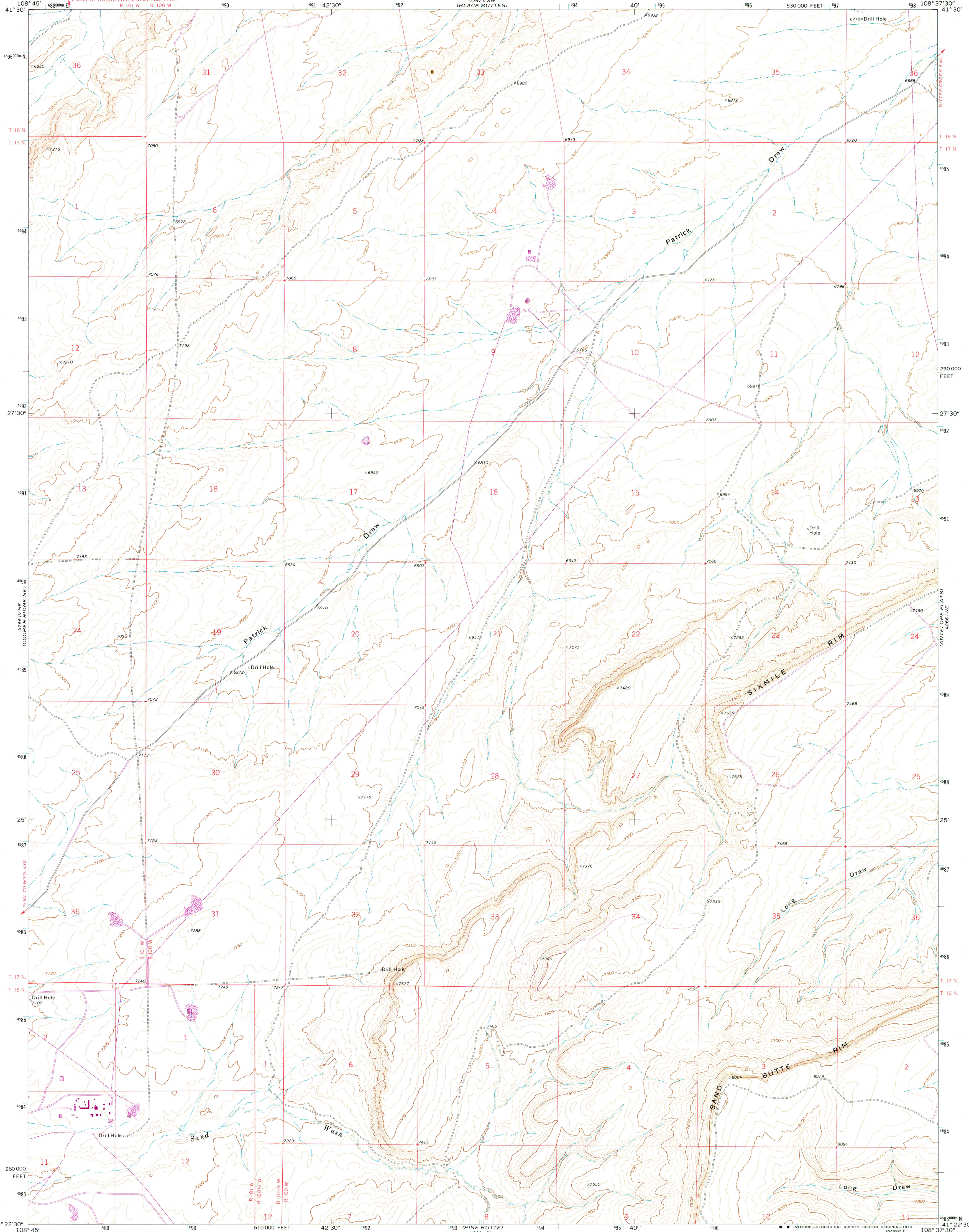


UNITED STATES  
DEPARTMENT OF THE INTERIOR  
GEOLOGICAL SURVEY

SAND BUTTE RIM NW QUADRANGLE  
WYOMING-SWEETWATER CO.  
7.5 MINUTE SERIES (TOPOGRAPHIC)

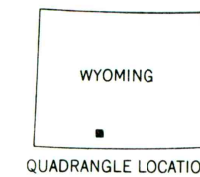
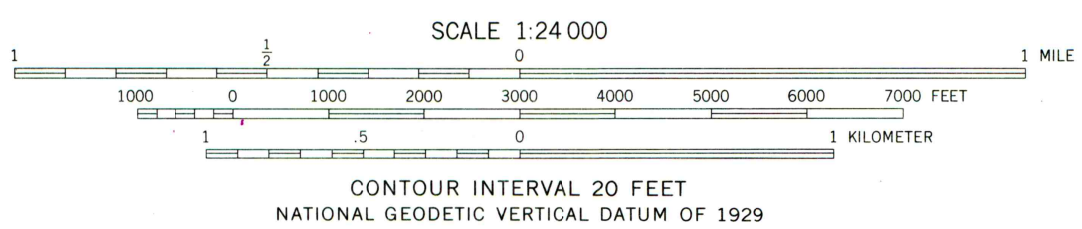
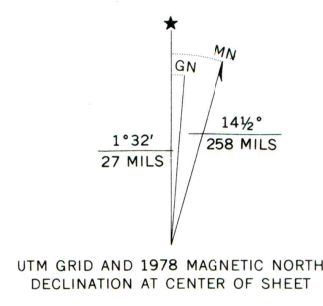


Mapped, edited, and published by the Geological Survey

Control by USGS and NOS/NOAA  
Topography by photogrammetric methods from aerial  
photographs taken 1967. Field checked 1968

Polyconic projection. 1927 North American datum  
10,000-foot grid based on Wyoming coordinate system,  
west central zone  
1000-meter Universal Transverse Mercator grid ticks,  
zone 12, shown in blue

Revisions shown in purple compiled from aerial photographs taken  
1976. Map edited 1978. This information not field checked



ROAD CLASSIFICATION  
Light-duty road, all weather. Unimproved road, fair or dry  
improved surface weather

SAND BUTTE RIM NW, WYO.  
N4122.5-W10837.57.5

1968  
PHOTOREVISED 1978  
AMS 4266 I NW-SERIES V874

THIS MAP COMPLIES WITH NATIONAL MAP ACCURACY STANDARDS  
FOR SALE BY U. S. GEOLOGICAL SURVEY, DENVER, COLORADO 80225, OR RESTON, VIRGINIA 22092  
A FOLDER DESCRIBING TOPOGRAPHIC MAPS AND SYMBOLS IS AVAILABLE ON REQUEST