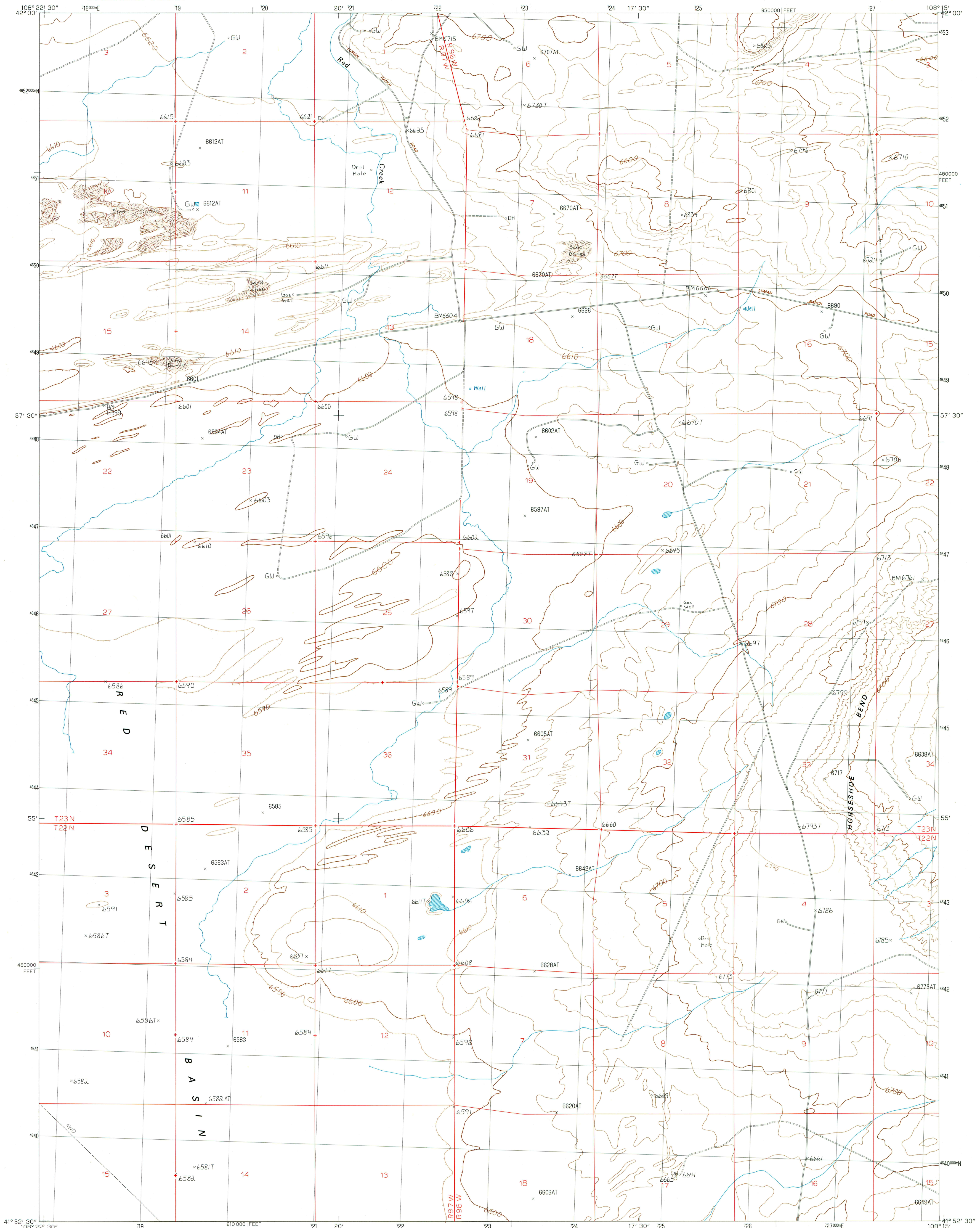


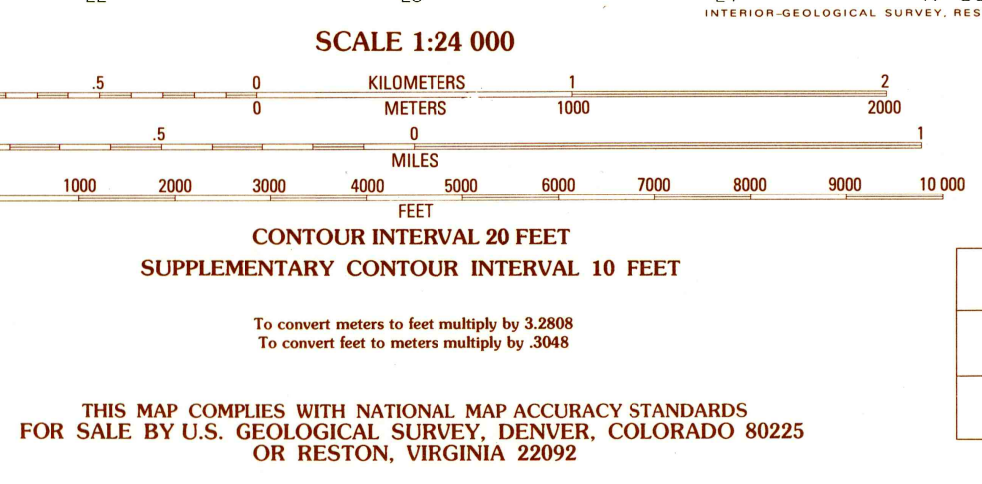
UNITED STATES
DEPARTMENT OF THE INTERIOR
GEOLOGICAL SURVEY

RED LAKE NE QUADRANGLE
WYOMING-SWEETWATER CO.
7.5 MINUTE SERIES (TOPOGRAPHIC)



PRODUCED BY THE UNITED STATES GEOLOGICAL SURVEY
CONTROL BY USGS, NOS/NOAA
COMPILED FROM AERIAL PHOTOGRAPHS TAKEN 1967
FIELD CHECKED 1960
LIMITED REVISION FROM AERIAL PHOTOGRAPHS TAKEN 1984
FIELD CHECKED 1986. MAP EDITED 1988
PROJECTION TRANSVERSE MERCATOR
GRID: 1000-METER UNIVERSAL TRANSVERSE MERCATOR ZONE 12
10,000-FOOT STATE GRID TICKS WYOMING, WEST CENTRAL ZONE
UTM GRID DECLINATION 1°48' EAST
1988 MAGNETIC NORTH DECLINATION 13' EAST
VERTICAL DATUM NATIONAL GEODETIC VERTICAL DATUM OF 1929
HORIZONTAL DATUM 1927 NORTH AMERICAN DATUM
To place on the predicted North American Datum of 1983,
move the projection lines as shown by dashed corner ticks
(8 meters north and 54 meters east)
There may be private inholdings within the boundaries of any
Federal and State Reservations shown on this map
Public Land Survey System is shown as published in 1960 and
verified or supplemented in 1986

PROVISIONAL MAP
Produced from original
manuscript drawings. Infor-
mation shown as of date of
field check.



RED LAKE NE, WYOMING
PROVISIONAL EDITION 1988
41108-H3-TF-024