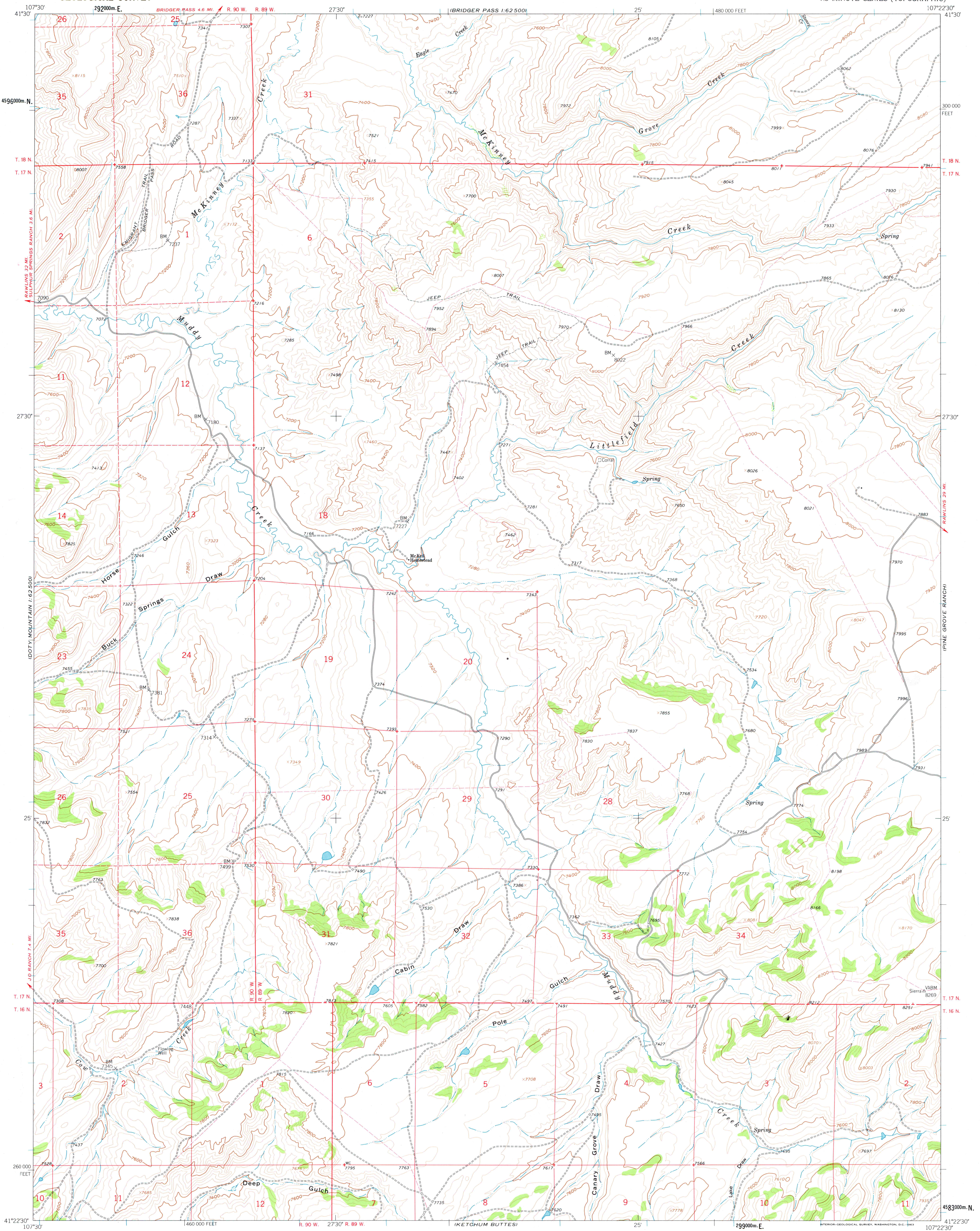


BRIDGER PASS
1:62,500



Mapped, edited, and published by the Geological Survey as part of the Department of the Interior program for the development of the Missouri River Basin

Control by USGS and USC&GS

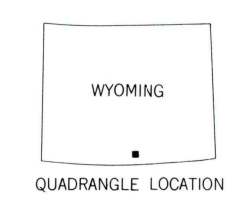
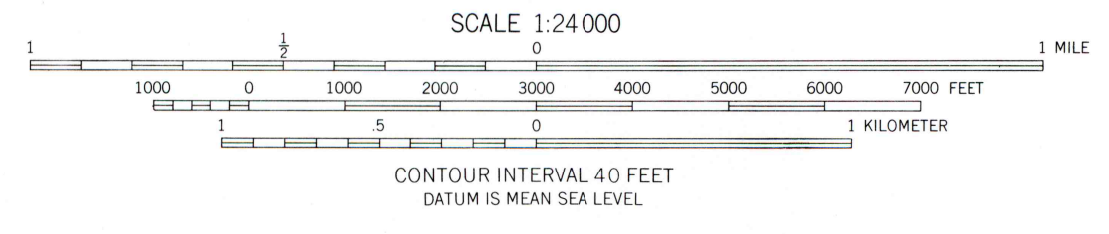
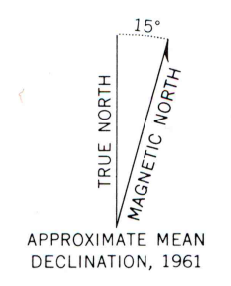
Topography by photogrammetric methods from aerial photographs taken 1957. Field checked 1961

Polyconic projection. 1927 North American datum. 10,000-foot grid based on Wyoming coordinate system, east central zone

1000-meter Universal Transverse Mercator grid ticks, zone 13, shown in blue

Fine red dashed lines indicate selected fence and field lines where generally visible on aerial photographs. This information is unchecked

Certain land lines are omitted because of insufficient data



ROAD CLASSIFICATION

Light-duty ——— Unimproved dirt - - - - -

THIS MAP COMPLIES WITH NATIONAL MAP ACCURACY STANDARDS

FOR SALE BY U.S. GEOLOGICAL SURVEY, DENVER 25, COLORADO OR WASHINGTON 25, D. C.

A FOLDER DESCRIBING TOPOGRAPHIC MAPS AND SYMBOLS IS AVAILABLE ON REQUEST

POLE GULCH, WYO.
N4122.5-W10722.5/7.5

1961

DOOTY MOUNTAIN
1:62,500

BRIDGER PASS
1:62,500

MC CARTY RANCH

PINE GROVE RANCH

RAWLINS 32 MI. SULPHUR SPRINGS RANCH 3.8 MI.

RAWLINS 39 MI.