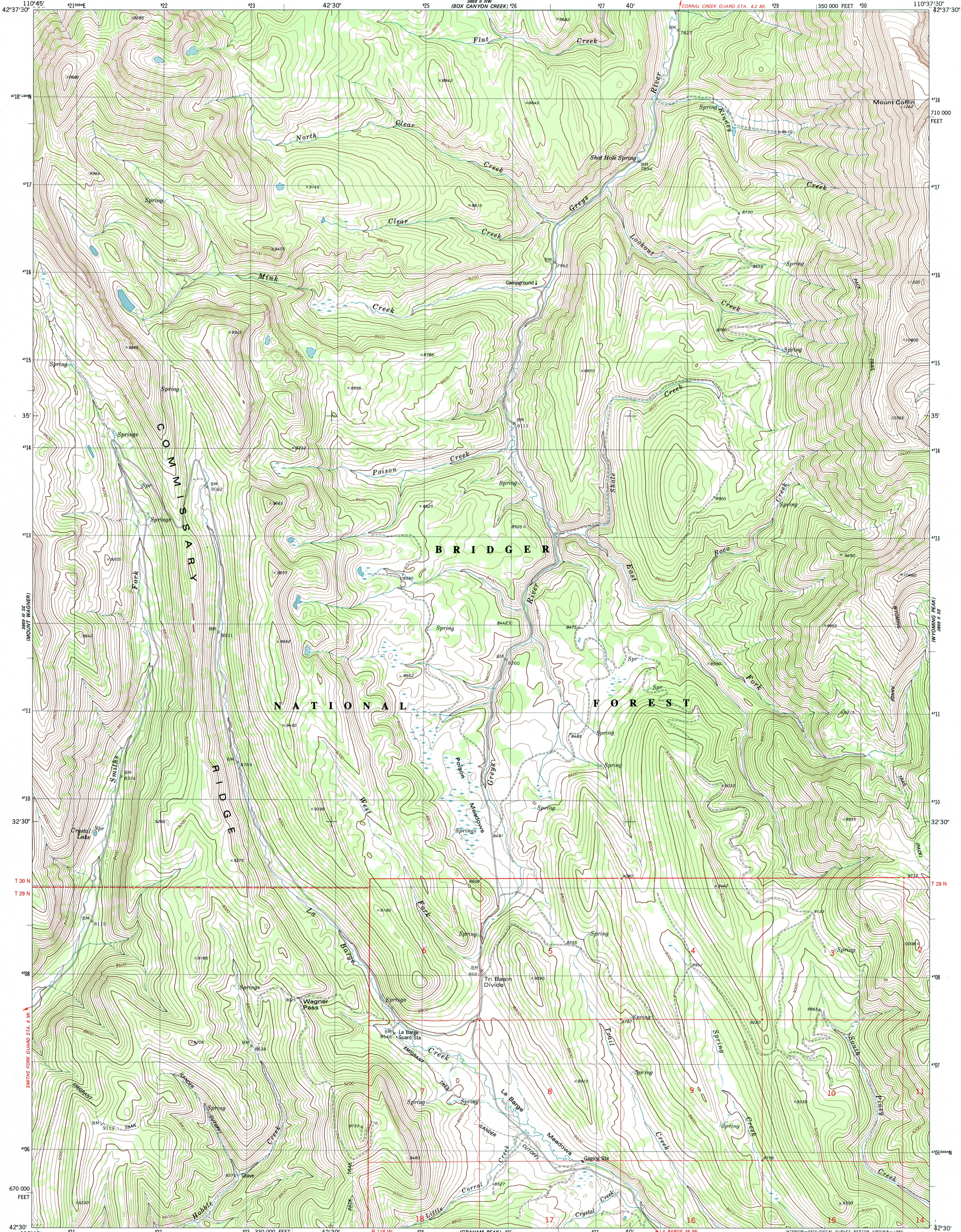


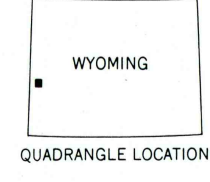
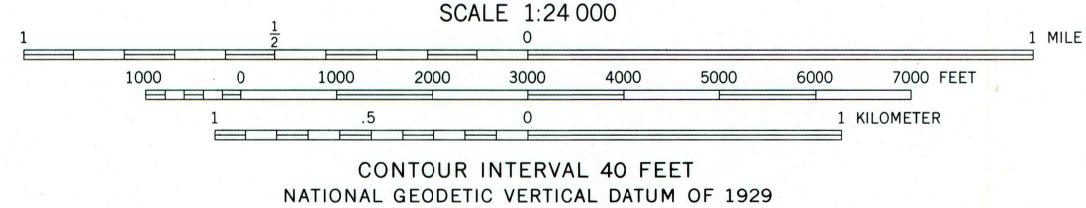
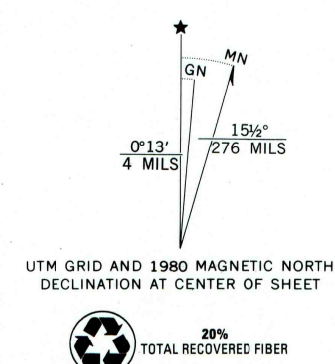


U.S. DEPARTMENT OF THE INTERIOR  
U.S. GEOLOGICAL SURVEY

POISON MEADOWS QUADRANGLE  
WYOMING-LINCOLN CO.  
7.5 MINUTE SERIES (TOPOGRAPHIC)



Mapped, edited, and published by the Geological Survey  
Control by USGS and NOS/NOAA  
Topography by photogrammetric methods from aerial photographs taken 1973. Field checked 1974. Map edited 1980  
Projection and 10,000-foot grid ticks: Wyoming coordinate system, west zone (transverse Mercator) 1000-meter Universal Transverse Mercator grid, zone 12 1927 North American datum  
To place on the predicted North American Datum 1983 move the projection lines 27 meters north and 62 meters east as shown by dashed corner ticks  
Fine red dashed lines indicate selected fence lines  
Where omitted, land lines have not been established  
There may be private inholdings within the boundaries of the National or State reservations shown on this map



ROAD CLASSIFICATION

Primary highway, hard surface	Light-duty road hard or improved surface
Secondary highway, hard surface	Unimproved road
Interstate Route	U. S. Route
	State Route

POISON MEADOWS, WYO.  
N4230-W11037.5/7.5  
1980  
DMA 3869 II SW-SERIES V874

THIS MAP COMPLIES WITH NATIONAL MAP ACCURACY STANDARDS  
FOR SALE BY U.S. GEOLOGICAL SURVEY, P.O. BOX 24286, DENVER, COLORADO 80225  
A FOLDER DESCRIBING TOPOGRAPHIC MAPS AND SYMBOLS IS AVAILABLE ON REQUEST

