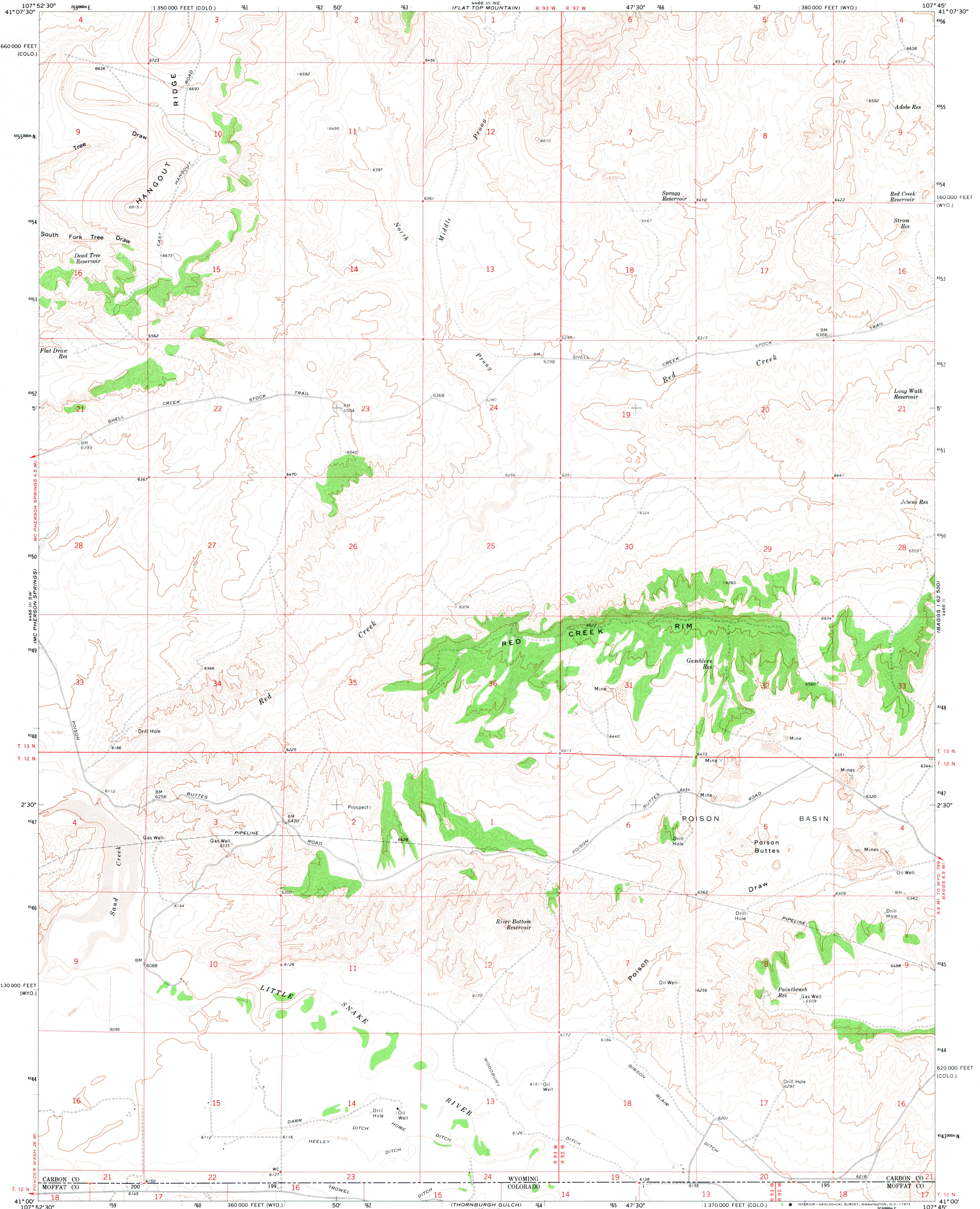
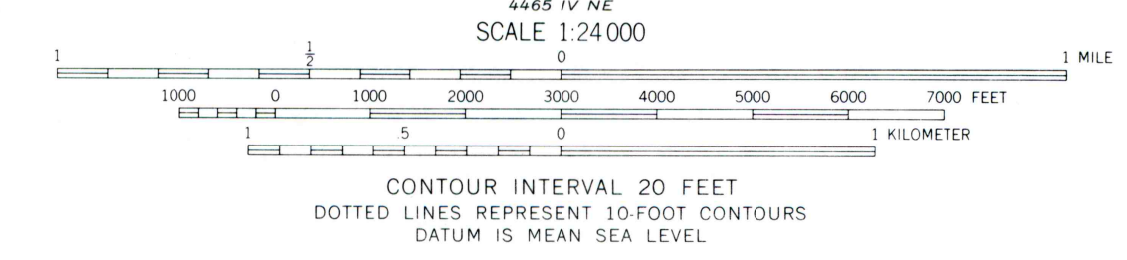
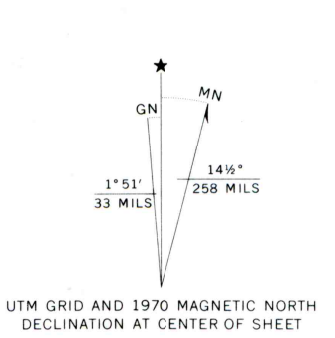


UNITED STATES  
DEPARTMENT OF THE INTERIOR  
GEOLOGICAL SURVEY

POISON BASIN QUADRANGLE  
WYOMING-COLORADO  
7.5 MINUTE SERIES (TOPOGRAPHIC)

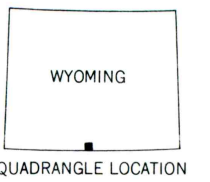


Mapped, edited, and published by the Geological Survey  
Control by USGS and USC&GS  
Topography by photogrammetric methods from aerial photographs taken 1968. Field checked 1970  
Polyconic projection. 1927 North American datum  
10,000-foot grids based on Wyoming coordinate system, east central zone and Colorado coordinate system, north zone  
1000-meter Universal Transverse Mercator grid ticks, zone 13, shown in blue  
Fine red dashed lines indicate selected fence lines  
T. 12 N., sixth Principal Meridian, is duplicated in Colorado and Wyoming



ROAD CLASSIFICATION

Primary highway, hard surface	Light-duty road, hard or improved surface
Secondary highway, hard surface	Unimproved road
Interstate Route	U. S. Route
	State Route



THIS MAP COMPLIES WITH NATIONAL MAP ACCURACY STANDARDS  
FOR SALE BY U. S. GEOLOGICAL SURVEY, DENVER, COLORADO 80225, OR WASHINGTON, D. C. 20242  
A FOLDER DESCRIBING TOPOGRAPHIC MAPS AND SYMBOLS IS AVAILABLE ON REQUEST

POISON BASIN, WYO.-COLO.  
N4100-W10745/7.5  
1970