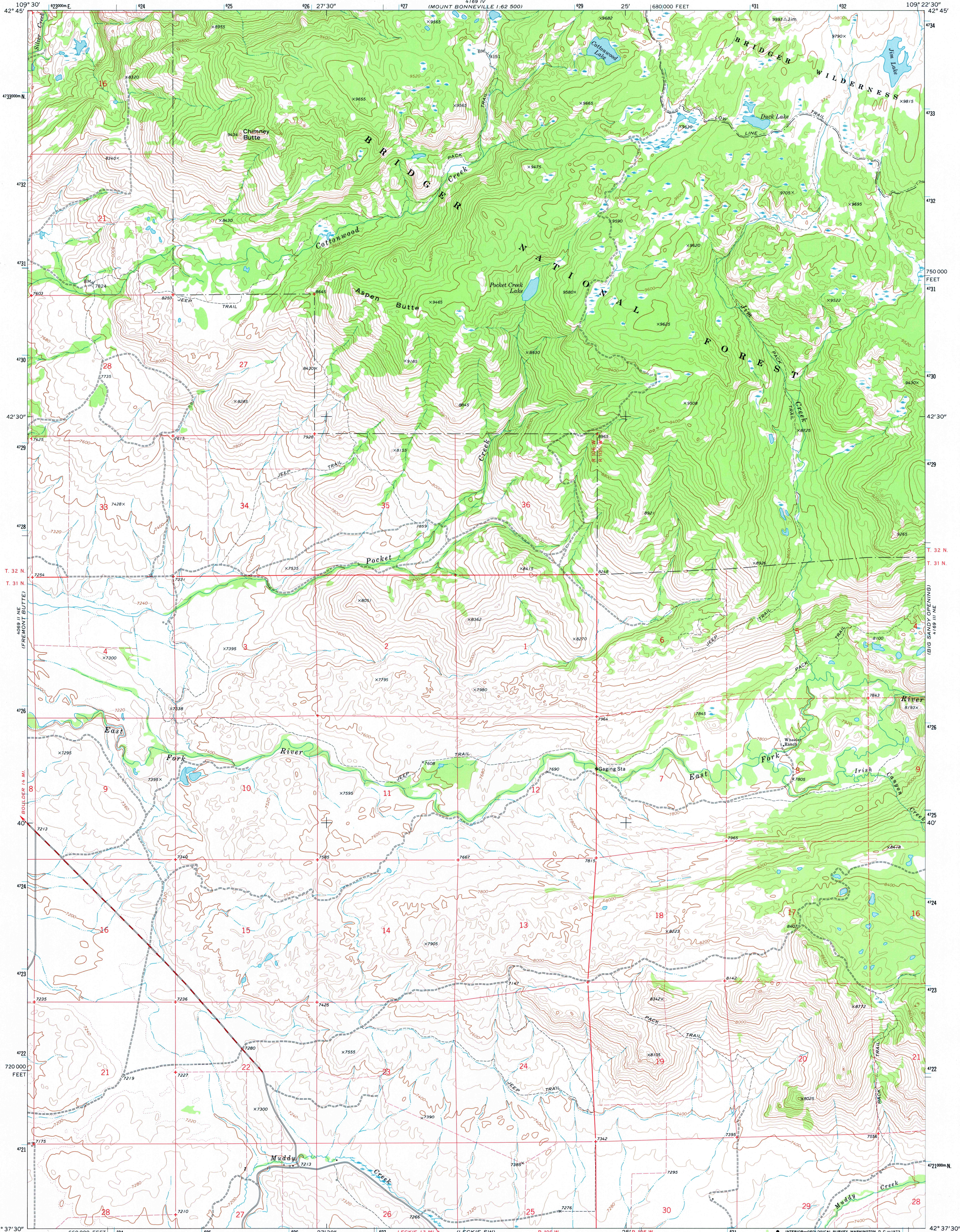


UNITED STATES
DEPARTMENT OF THE INTERIOR
GEOLOGICAL SURVEY

POCKET CREEK LAKE QUADRANGLE
WYOMING—SUBLETTE CO.
7.5 MINUTE SERIES (TOPOGRAPHIC)



Mapped, edited, and published by the Geological Survey

Control by USGS and USC&GS

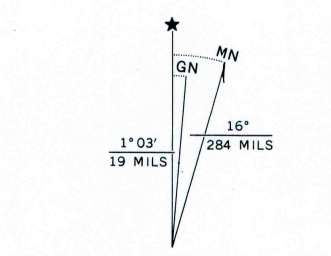
Topography by photogrammetric methods from aerial photographs taken 1968. Field checked 1969

Polyconic projection. 1927 North American datum, 10,000-foot grid based on Wyoming coordinate system, west zone

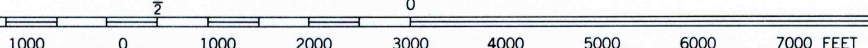
1000-meter Universal Transverse Mercator grid ticks, zone 12, shown in blue

Fine red dashed lines indicate selected fence lines

Where omitted, land lines have not been established



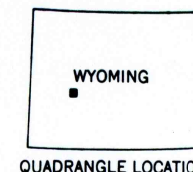
SCALE 1:24,000



CONTOUR INTERVAL 40 FEET

DOTTED LINES REPRESENT 20-FOOT CONTOURS

DATUM IS MEAN SEA LEVEL



ROAD CLASSIFICATION

- Primary highway, hard surface
- Secondary highway, hard surface
- Interstate Route
- U.S. Route
- State Route
- Light-duty road, hard or improved surface
- Unimproved road

POCKET CREEK LAKE, WYO.
N4237.5—W10922.5/7.5

1969

AMS 4169 III NW—SERIES 1974

THIS MAP COMPLIES WITH NATIONAL MAP ACCURACY STANDARDS
FOR SALE BY U.S. GEOLOGICAL SURVEY, DENVER, COLORADO 80225, OR WASHINGTON, D. C. 20242
A FOLDER DESCRIBING TOPOGRAPHIC MAPS AND SYMBOLS IS AVAILABLE ON REQUEST