

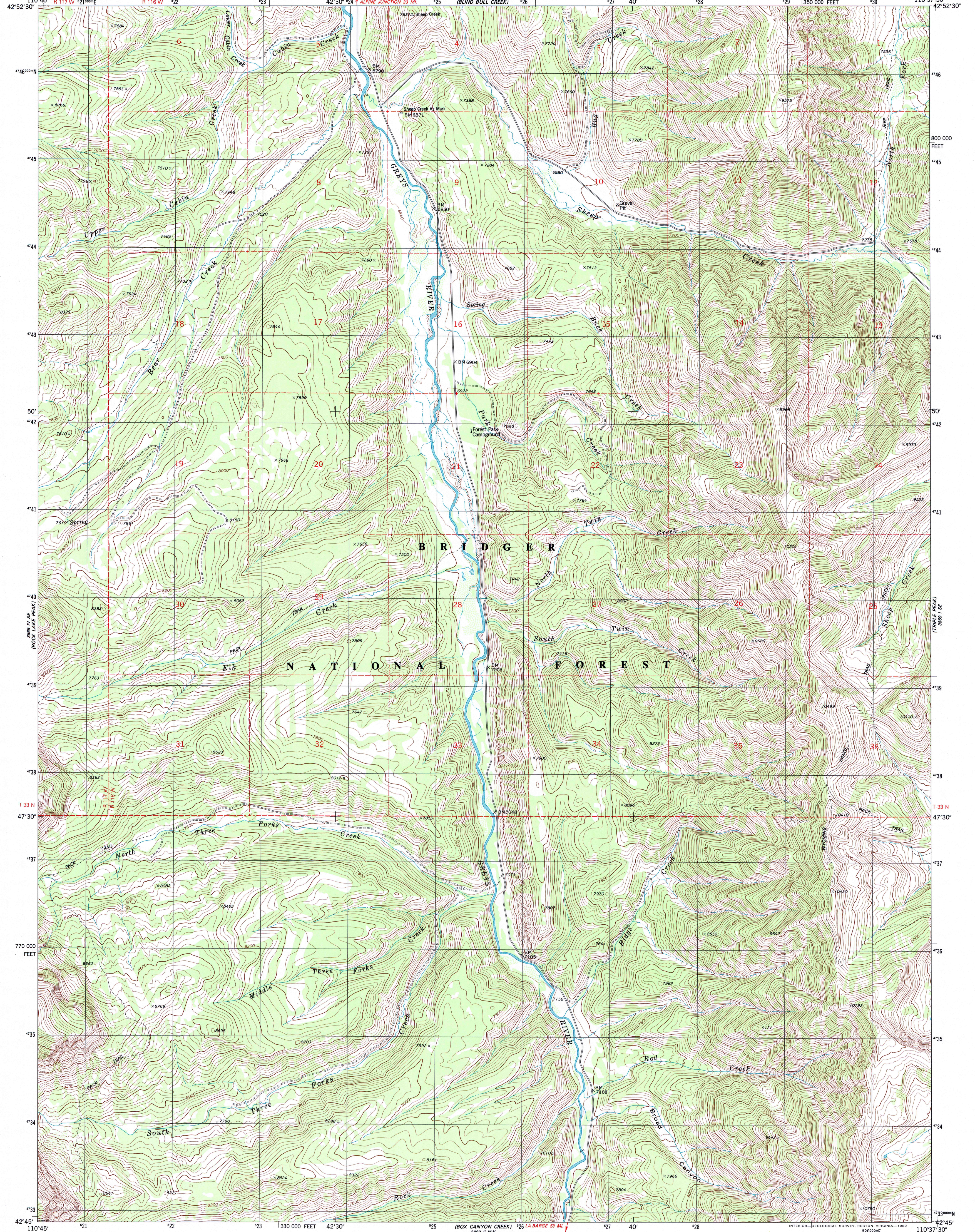
3889 IV SE
ROCK LAKE PEAK



U.S. DEPARTMENT OF THE INTERIOR
U.S. GEOLOGICAL SURVEY

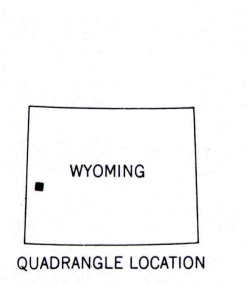
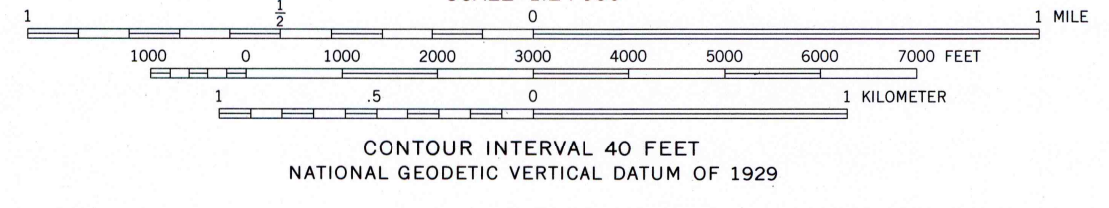
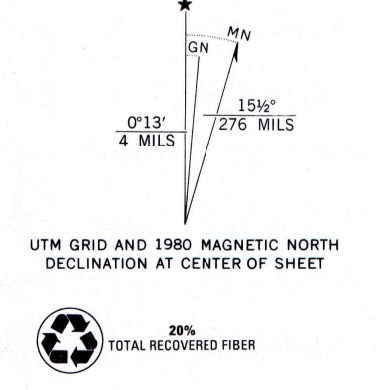
PARK CREEK QUADRANGLE
WYOMING-LINCOLN CO.
7.5 MINUTE SERIES (TOPOGRAPHIC)

3889 I NE
LOOKOUT MOUNTAIN



Mapped, edited, and published by the Geological Survey

Control by USGS and NOS/NOAA
Topography by photogrammetric methods from aerial photographs taken 1973. Field checked 1974. Map edited 1980
Projection and 10,000-foot grid ticks: Wyoming coordinate system, west zone (transverse Mercator)
1000-meter Universal Transverse Mercator grid, zone 12
1927 North American datum
To place on the predicted North American Datum 1983 move the projection lines 11 meters north and 62 meters east as shown by dashed corner ticks
Where omitted, land lines have not been established
There may be private inholdings within the boundaries of the National or State reservations shown on this map



ROAD CLASSIFICATION

Primary highway, hard surface	Light-duty road, hard or improved surface
Secondary highway, hard surface	Unimproved road
Interstate Route	U. S. Route
	State Route

THIS MAP COMPLIES WITH NATIONAL MAP ACCURACY STANDARDS
FOR SALE BY U.S. GEOLOGICAL SURVEY P.O. BOX 25298, DENVER, COLORADO 80225
A FOLDER DESCRIBING TOPOGRAPHIC MAPS AND SYMBOLS IS AVAILABLE ON REQUEST

PARK CREEK, WYO.
N4245-W11037.5/7.5
1980
DMA 3889 I SW-SERIES V874



3889 IV SE
RED TOP MOUNTAIN

3889 I NE
MOUNT SPOCKERY