

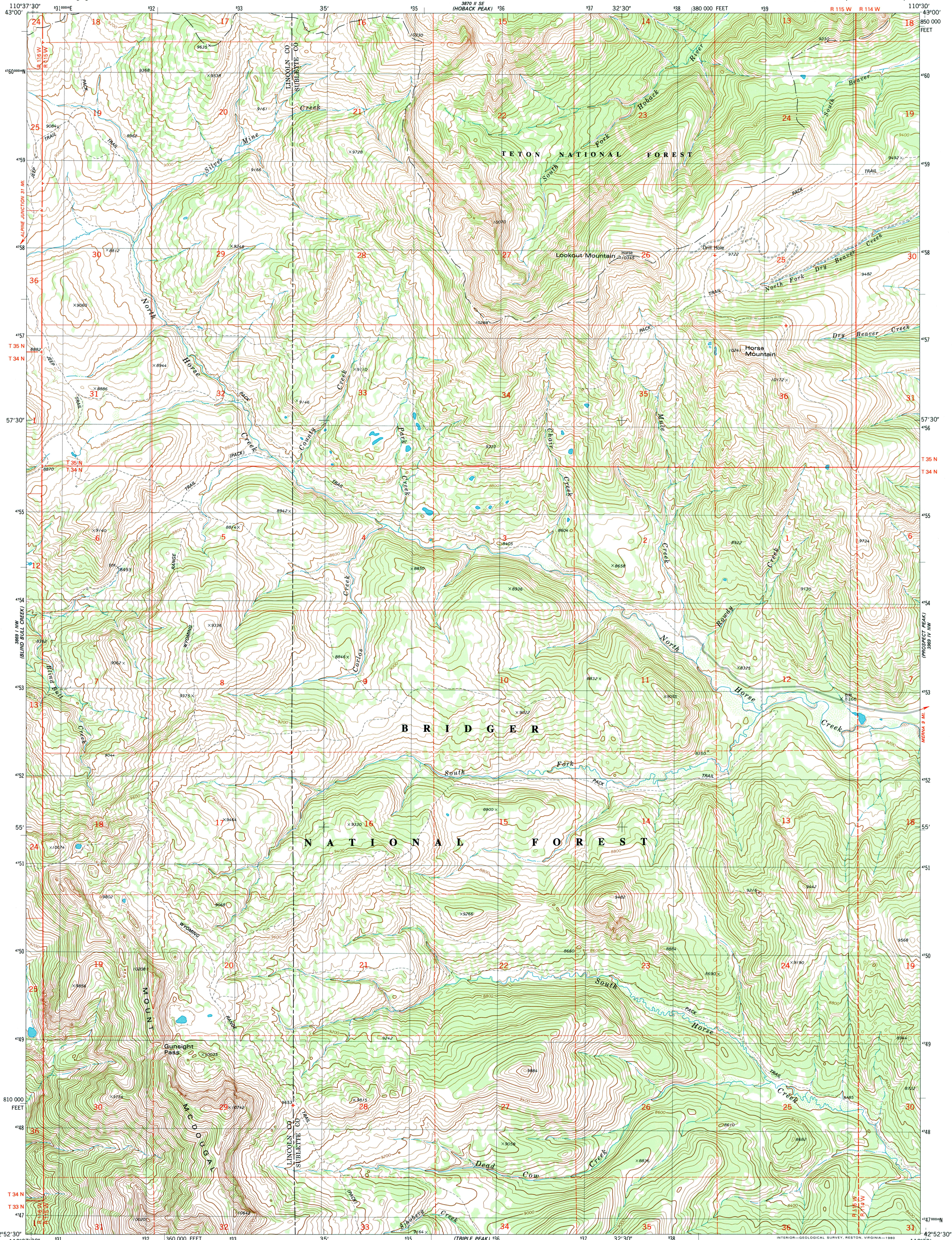
380 II SW
(TRIPLE PEAK)



U.S. DEPARTMENT OF THE INTERIOR
U.S. GEOLOGICAL SURVEY

LOOKOUT MOUNTAIN QUADRANGLE
WYOMING
7.5 MINUTE SERIES (TOPOGRAPHIC)

380 II SW
(NOBLE BASIN)

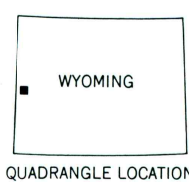
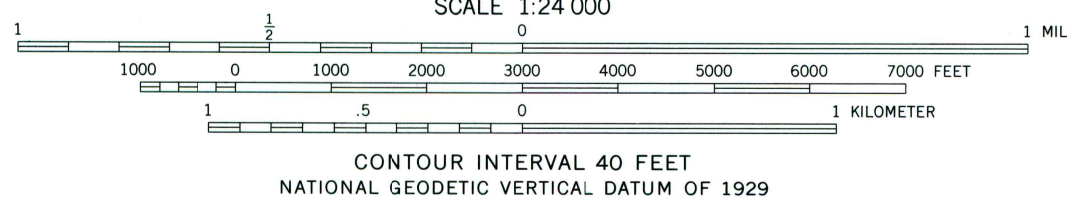
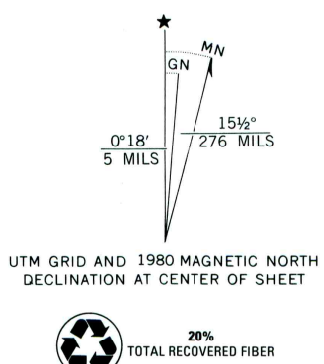


Mapped, edited, and published by the Geological Survey

Control by USGS and NOS/NOAA
Topography by photogrammetric methods from aerial photographs taken 1973. Field checked 1977. Map edited 1980

Projection and 10,000-foot grid ticks: Wyoming coordinate system, west zone (transverse Mercator)
1000-meter Universal Transverse Mercator grid, zone 12
1927 North American datum
To place on the predicted North American Datum 1983 move the projection lines 11 meters north and 62 meters east as shown by dashed corner ticks

There may be private inholdings within the boundaries of the National or State reservations shown on this map



ROAD CLASSIFICATION

Primary highway, hard surface	Light-duty road, hard or improved surface
Secondary highway, hard surface	Unimproved road
Interstate Route	U. S. Route
	State Route

LOOKOUT MOUNTAIN, WYO.
N4252.5-W11030.7.5

1980

DMA 3869 I NE-SERIES V874

THIS MAP COMPLIES WITH NATIONAL MAP ACCURACY STANDARDS
FOR SALE BY U.S. GEOLOGICAL SURVEY, P.O. BOX 25286, DENVER, COLORADO 80225
A FOLDER DESCRIBING TOPOGRAPHIC MAPS AND SYMBOLS IS AVAILABLE ON REQUEST

