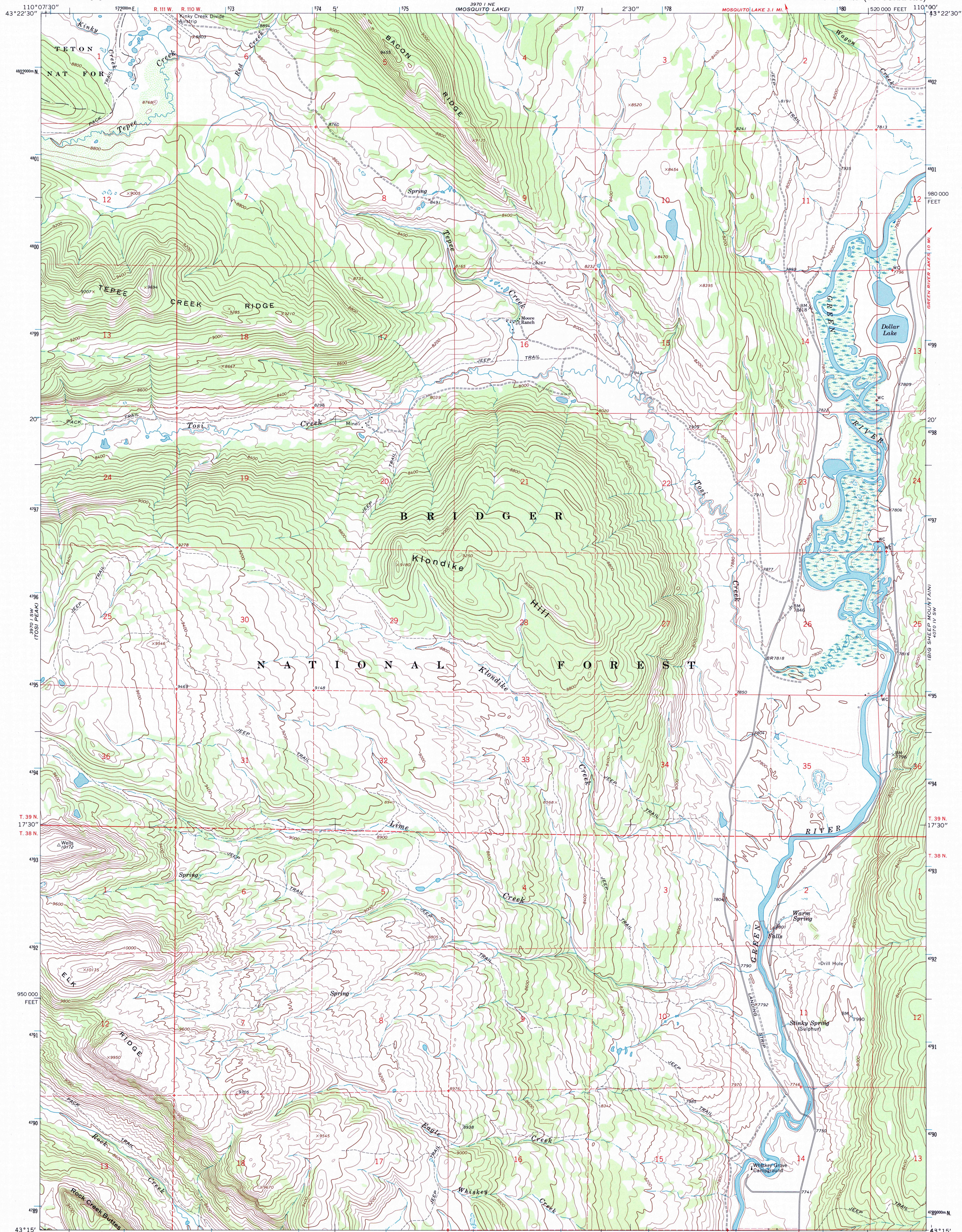




U.S. DEPARTMENT OF THE INTERIOR
U.S. GEOLOGICAL SURVEY

KLONDIKE HILL QUADRANGLE
WYOMING—SUBLETTE CO.
7.5 MINUTE SERIES (TOPOGRAPHIC)



Mapped, edited, and published by the Geological Survey

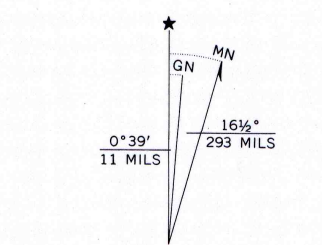
Control by USGS and USC&GS

Topography by photogrammetric methods from aerial photographs taken 1966. Field checked 1967

Polyconic projection. 1927 North American datum
10,000-foot grid based on Wyoming coordinate system,
west zone
1000-meter Universal Transverse Mercator grid ticks,
zone 12, shown in blue

Fine red dashed lines indicate selected fence lines
To place on the predicted North American Datum 1983
move the projection lines 10 meters north and
60 meters east as shown by dashed corner ticks

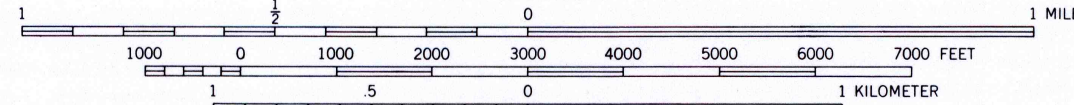
There may be private inholdings within the boundaries of
the National or State reservations shown on this map



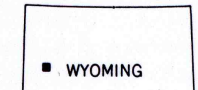
UTM GRID AND 1967 MAGNETIC NORTH
DECLINATION AT CENTER OF SHEET



20% TOTAL RECOVERED FIBER



SCALE 1:24 000
CONTOUR INTERVAL 40 FEET
DOTTED LINES REPRESENT 20-FOOT CONTOURS
NATIONAL GEODETIC VERTICAL DATUM OF 1929



WYOMING
QUADRANGLE LOCATION

ROAD CLASSIFICATION
Light duty ————— Unimproved dirt - - - - -

KLONDIKE HILL, WYO.
N4315—W11000/7.5

1967

DMA 3970 I SE—SERIES V874

THIS MAP COMPLIES WITH MAP ACCURACY STANDARDS
FOR SALE BY U.S. GEOLOGICAL SURVEY
P.O. BOX 25286, DENVER, COLORADO 80225
A FOLDER DESCRIBING TOPOGRAPHIC MAPS AND SYMBOLS IS AVAILABLE ON REQUEST



9 780607 607628