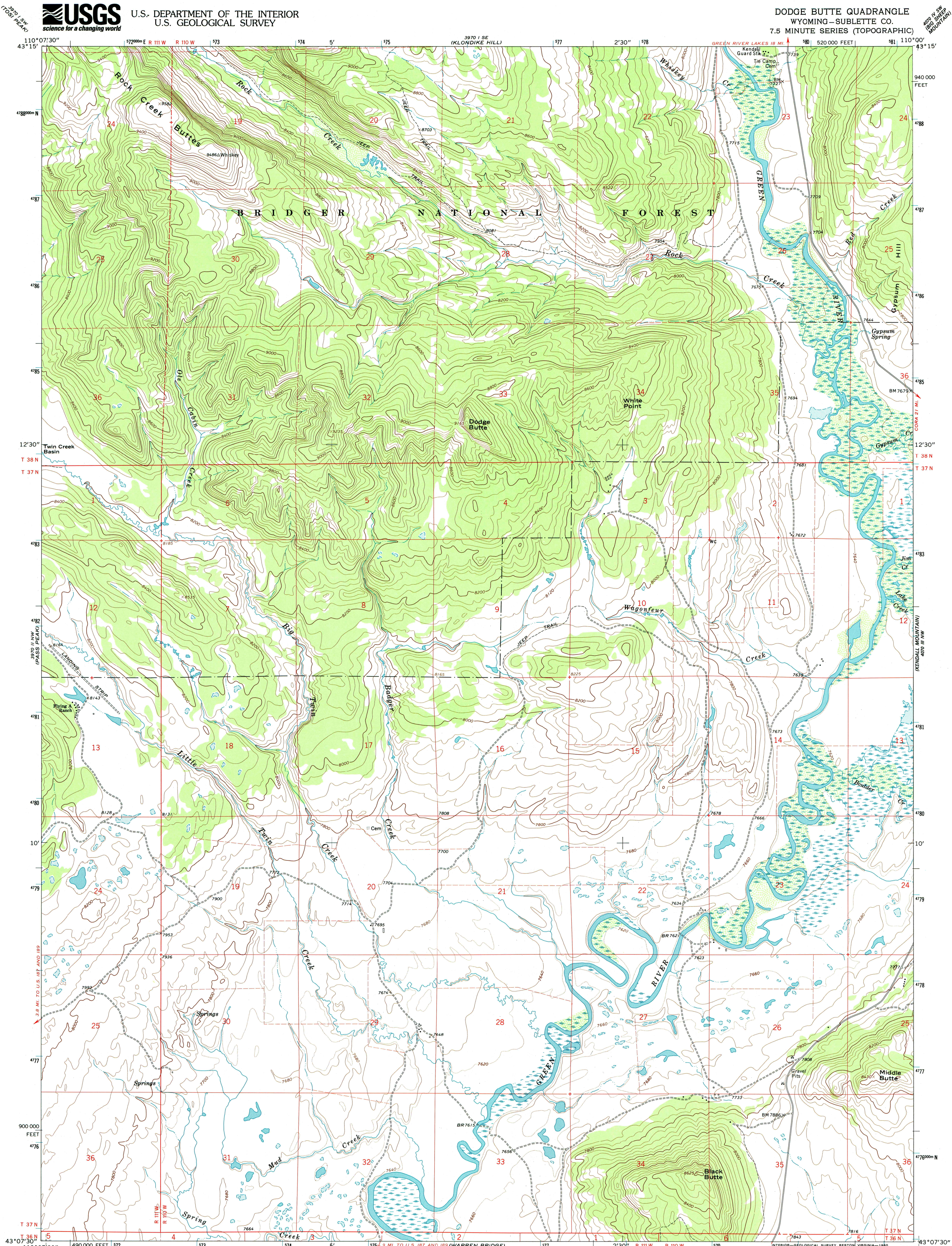




U.S. DEPARTMENT OF THE INTERIOR
U.S. GEOLOGICAL SURVEY

DODGE BUTTE QUADRANGLE
WYOMING - SUBLETTE CO.
7.5 MINUTE SERIES (TOPOGRAPHIC)

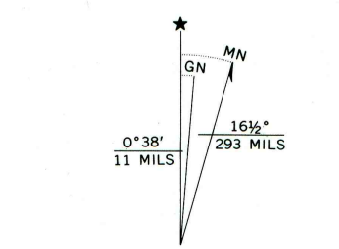


Mapped, edited, and published by the Geological Survey

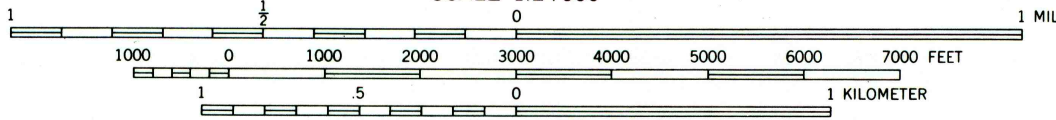
Control by USGS and USC&GS
Topography by photogrammetric methods from aerial photographs taken 1966. Field checked 1966
Polyconic projection. 1927 North American datum
10,000-foot grid based on Wyoming coordinate system, west zone
1000-meter Universal Transverse Mercator grid ticks, zone 12, shown in blue
Fine red dashed lines indicate selected fence lines

To place on the predicted North American Datum 1983 move the projection lines 10 meters north and 59 meters east as shown by dashed corner ticks

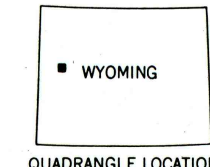
There may be private inholdings within the boundaries of the National or State reservations shown on this map



UTM GRID AND 1966 MAGNETIC NORTH DECLINATION AT CENTER OF SHEET



SCALE 1:24,000
CONTOUR INTERVAL 40 FEET
DOTTED LINES REPRESENT 20-FOOT CONTOURS
NATIONAL GEODETIC VERTICAL DATUM OF 1929



ROAD CLASSIFICATION
Light-duty ————— Unimproved dirt - - - - -

THIS MAP COMPLIES WITH NATIONAL MAP ACCURACY STANDARDS
FOR SALE BY U.S. GEOLOGICAL SURVEY, P.O. BOX 25286, DENVER, COLORADO 80225
A FOLDER DESCRIBING TOPOGRAPHIC MAPS AND SYMBOLS IS AVAILABLE ON REQUEST

DODGE BUTTE, WYO.
N4307.5-W11000/7.5

1966
DMA 3970 II NE-SERIES V874



ISBN 0-607-60438-7
9 780607 604382