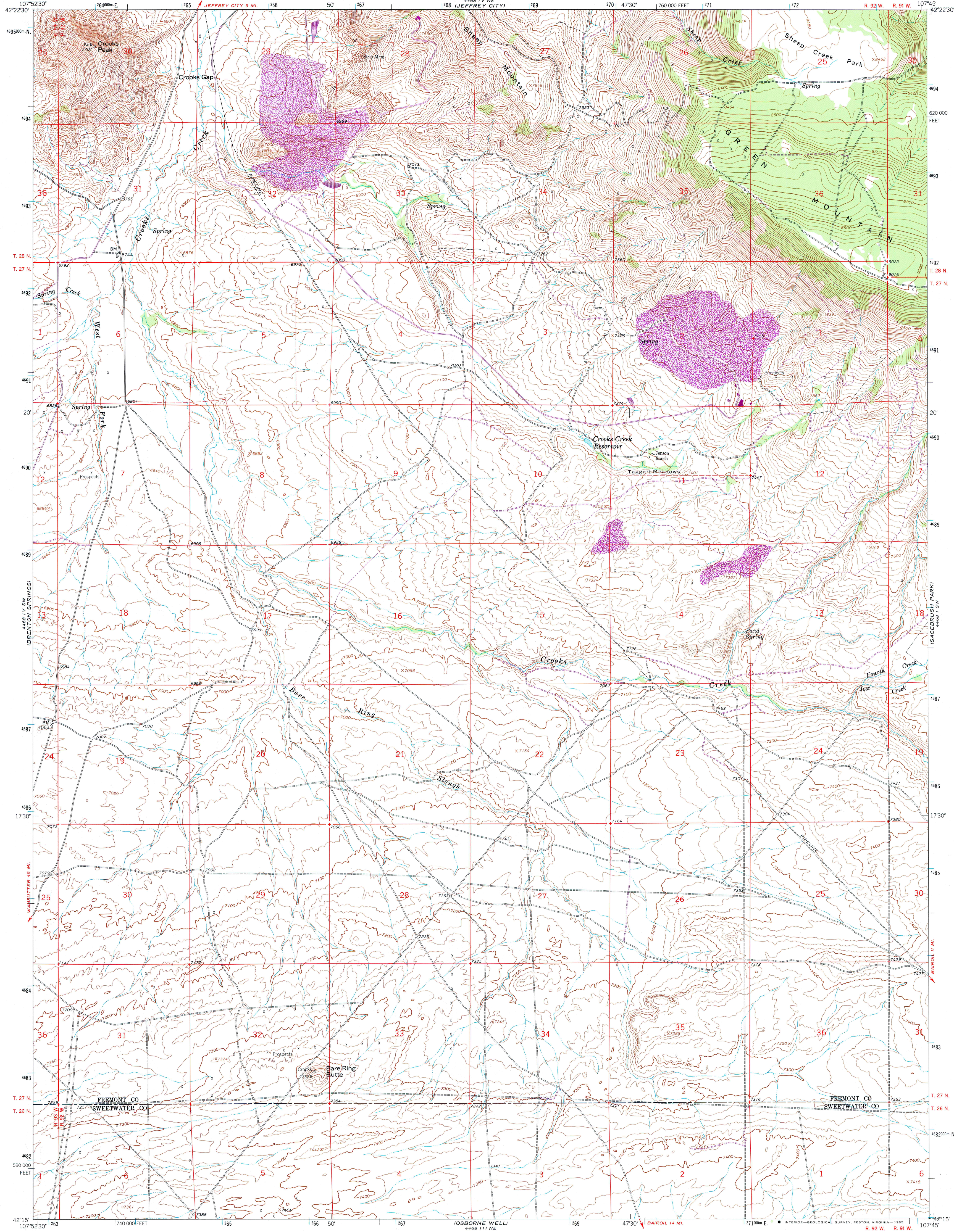


UNITED STATES
DEPARTMENT OF THE INTERIOR
GEOLOGICAL SURVEY

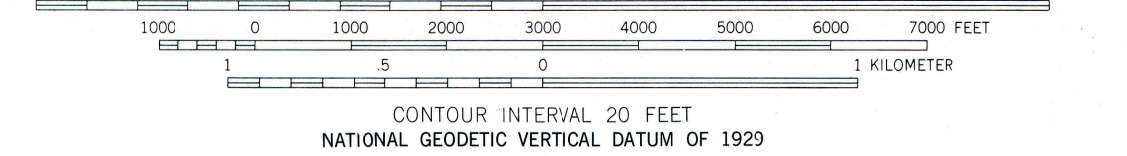
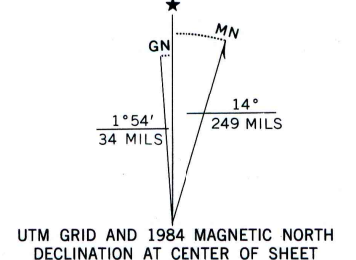
CROOKS PEAK QUADRANGLE
WYOMING
7.5 MINUTE SERIES (TOPOGRAPHIC)



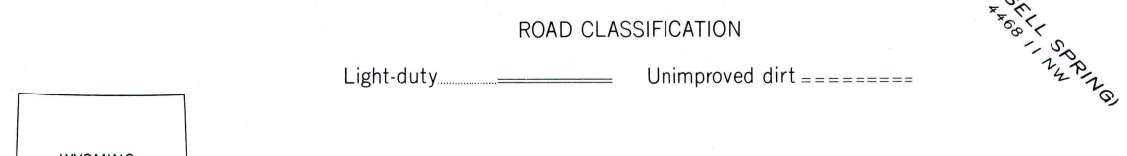
Mapped, edited, and published by the Geological Survey

Control by USGS and NOS/NOAA
Topography by photogrammetric methods from aerial photographs taken 1960. Field checked 1961
Polyconic projection. 1927 North American Datum
10,000-foot grid based on Wyoming coordinate system, west central zone
1000-meter Universal Transverse Mercator grid ticks, zone 13, shown in blue
Fine dashed lines indicate selected fence lines

To place on the predicted North American Datum 1983
move the projection lines 8 meters north and
53 meters east as shown by dashed corner ticks



THIS MAP COMPLIES WITH NATIONAL MAP ACCURACY STANDARDS
FOR SALE BY U. S. GEOLOGICAL SURVEY, DENVER, COLORADO 80225, OR RESTON, VIRGINIA 22092
A FOLDER DESCRIBING TOPOGRAPHIC MAPS AND SYMBOLS IS AVAILABLE ON REQUEST



ROAD CLASSIFICATION
Light-duty ————— Unimproved dirt =

WYOMING
QUADRANGLE LOCATION

Revisions shown in purple compiled from aerial photographs taken 1980 and other source data. This information not field checked. Map edited 1984

CROOKS PEAK, WYO.
42107-C7-TF-024
1961
PHOTOREVISED 1984
DMA 4468 IV SE-SERIES V874