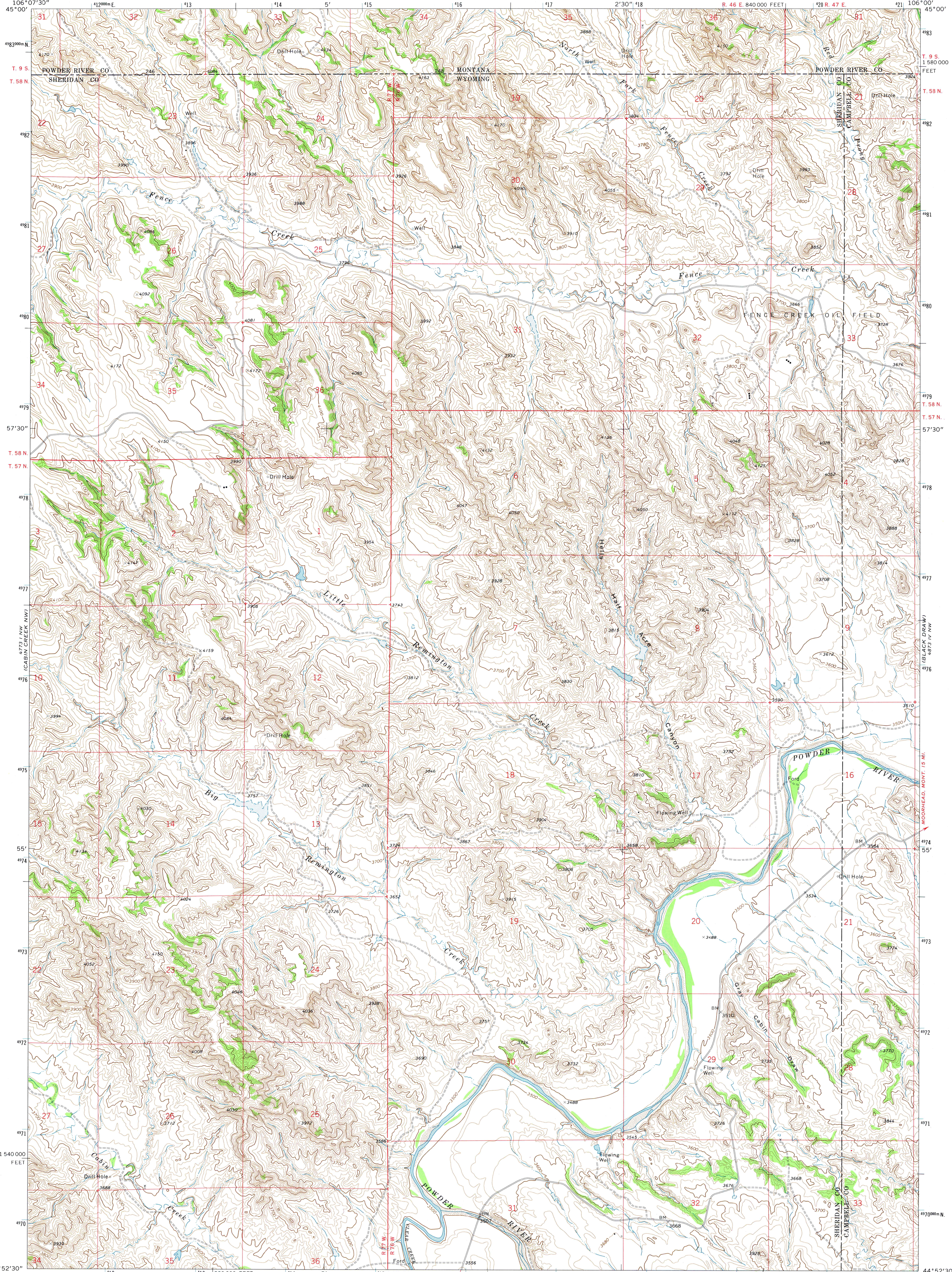
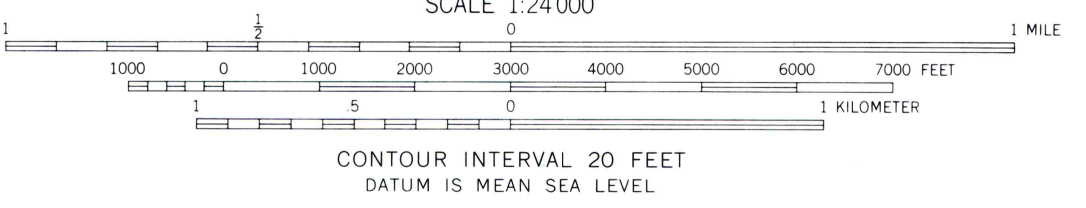
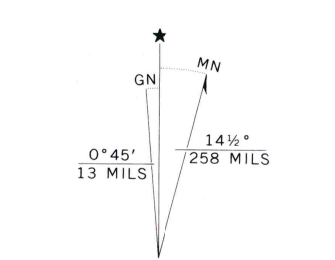


45° 52' 30" N  
106° 07' 30" W



44° 52' 30" N 106° 07' 30" W 1820000 FEET 14 5' 115 6 MI. TO U.S. 14 AND 16 (CABINCREEK SE) 4773 1 SE 117 2' 30" 118 19 4200000 E 21 44° 52' 30" N

Mapped, edited, and published by the Geological Survey  
Control by USGS and USC&GS  
Topography by photogrammetric methods from aerial photographs taken 1970. Field checked 1971  
Projection and 10,000-foot grid ticks: Wyoming coordinate system, east central zone (transverse Mercator) 1000-meter Universal Transverse Mercator grid ticks, zone 13, shown in blue, 1927 North American datum  
Fine red dashed lines indicate selected fence lines



ROAD CLASSIFICATION

Primary highway, hard surface	Light-duty road, hard or improved surface
Secondary highway, hard surface	Unimproved road
Interstate Route	U. S. Route
	State Route

CABIN CREEK NE, WYO.—MONT.  
N4452.5—W10600/7.5

1971

AMS 4773 1 NE—SERIES V874

THIS MAP COMPLIES WITH NATIONAL MAP ACCURACY STANDARDS  
FOR SALE BY U. S. GEOLOGICAL SURVEY, DENVER, COLORADO 80225, OR RESTON, VIRGINIA 22092  
A FOLDER DESCRIBING TOPOGRAPHIC MAPS AND SYMBOLS IS AVAILABLE ON REQUEST