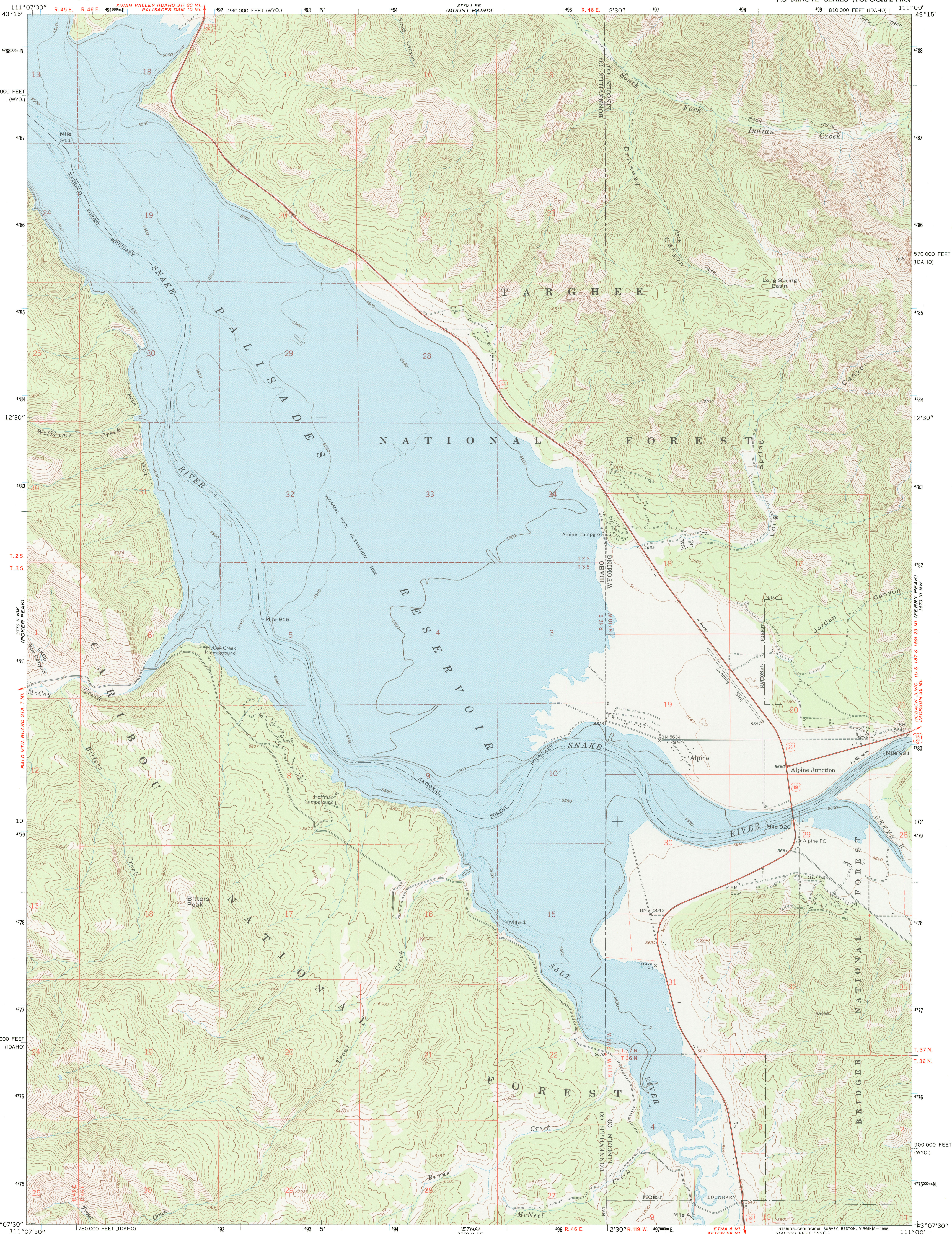


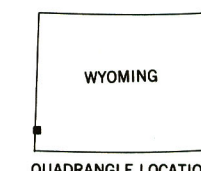
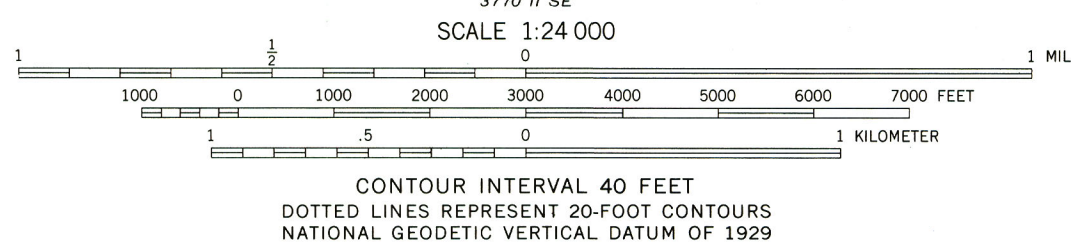
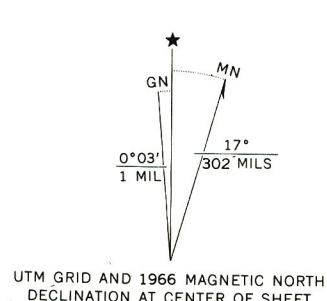


U.S. DEPARTMENT OF THE INTERIOR  
U.S. GEOLOGICAL SURVEY

ALPINE QUADRANGLE  
WY-ID  
7.5 MINUTE SERIES (TOPOGRAPHIC)



Produced by the United States Geological Survey  
Control by USGS and NOS/NOAA  
Compiled from aerial photographs taken 1965. Field checked 1966  
Underwater contours by U.S. Bureau of Reclamation  
North American Datum of 1927 (NAD 27). Projection:  
Idaho Coordinate System, east zone (Lambert Conformal Conic)  
10000-foot ticks: Wyoming Coordinate System, west zone  
Blue 1000-meter Universal Transverse Mercator ticks, zone 12  
North American Datum of 1983 (NAD 83) is shown by dashed  
corner ticks. The values of the shift between NAD 27 and NAD 83  
for 7.5-minute intersections are obtainable from National Geodetic  
Survey NADCON software  
There may be private inholdings within the boundaries of the  
National or State reservations shown on this map  
Fine red dashed lines indicate selected fence lines  
Where omitted, land lines have not been established



ROAD CLASSIFICATION  
Heavy-duty ..... Light-duty .....  
Unimproved dirt ..... U.S. Route

THIS MAP COMPLIES WITH NATIONAL MAP ACCURACY STANDARDS  
FOR SALE BY U.S. GEOLOGICAL SURVEY, P.O. BOX 25286, DENVER, COLORADO 80225  
A FOLDER DESCRIBING TOPOGRAPHIC MAPS AND SYMBOLS IS AVAILABLE ON REQUEST

ALPINE, WY-ID

1966

DMA 3770 II NE-SERIES V893

