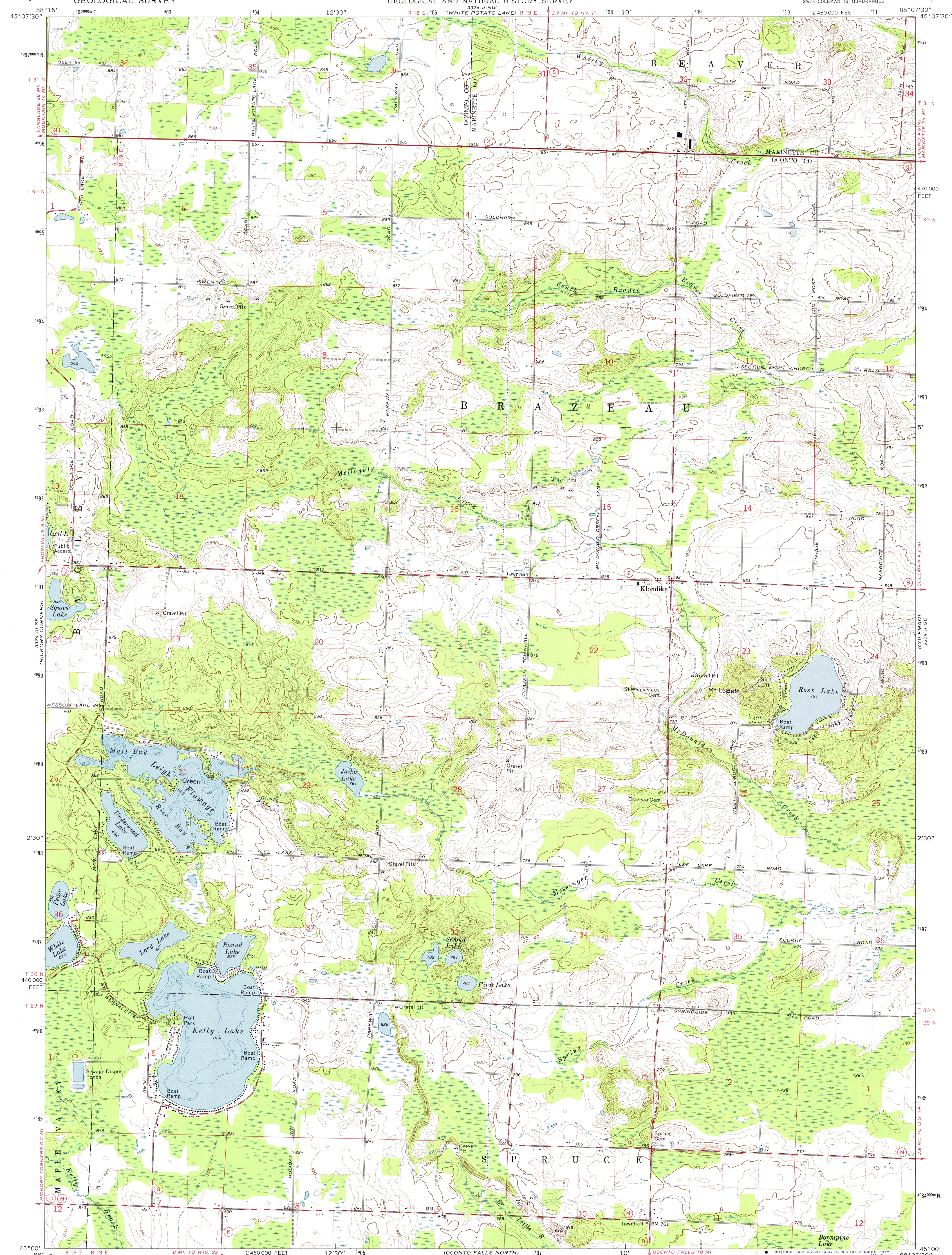
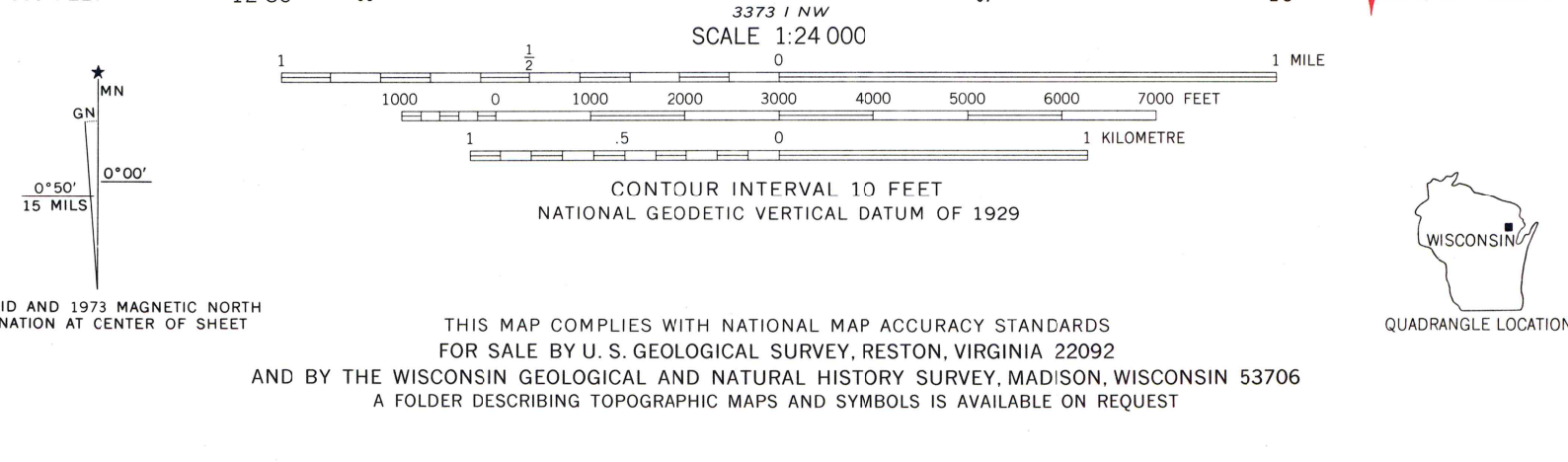


3.74 MI. TO
SQUAW LAKE

3.74 MI. TO
MARNETTE



Mapped, edited, and published by the Geological Survey in cooperation with the Wisconsin Division of Highways and Wisconsin Geological and Natural History Survey
Control by USGS and NOS/NOAA
Topography by photogrammetric methods from aerial photographs taken 1972. Field checked 1973
Hydrography compiled from information furnished by Wisconsin Department of Natural Resources
Projection and 10,000-foot grid ticks: Wisconsin coordinate system, central zone (Lambert conformal conic)
1000-metre Universal Transverse Mercator grid ticks, zone 16, shown in blue. 1927 North American datum
Fine red dashed lines indicate selected fence and field lines where generally visible on aerial photographs. This information is uncheck



ROAD CLASSIFICATION
Primary highway, hard surface
Secondary highway, hard surface
Light-duty road, hard or improved surface
Unimproved road
Interstate Route
U. S. Route
State Route

KELLY LAKE, WIS.
SW/4 COLEMAN 15' QUADRANGLE
N4500-W8807.5/7.5
1973
AMS 3374 II SW-SERIES V861