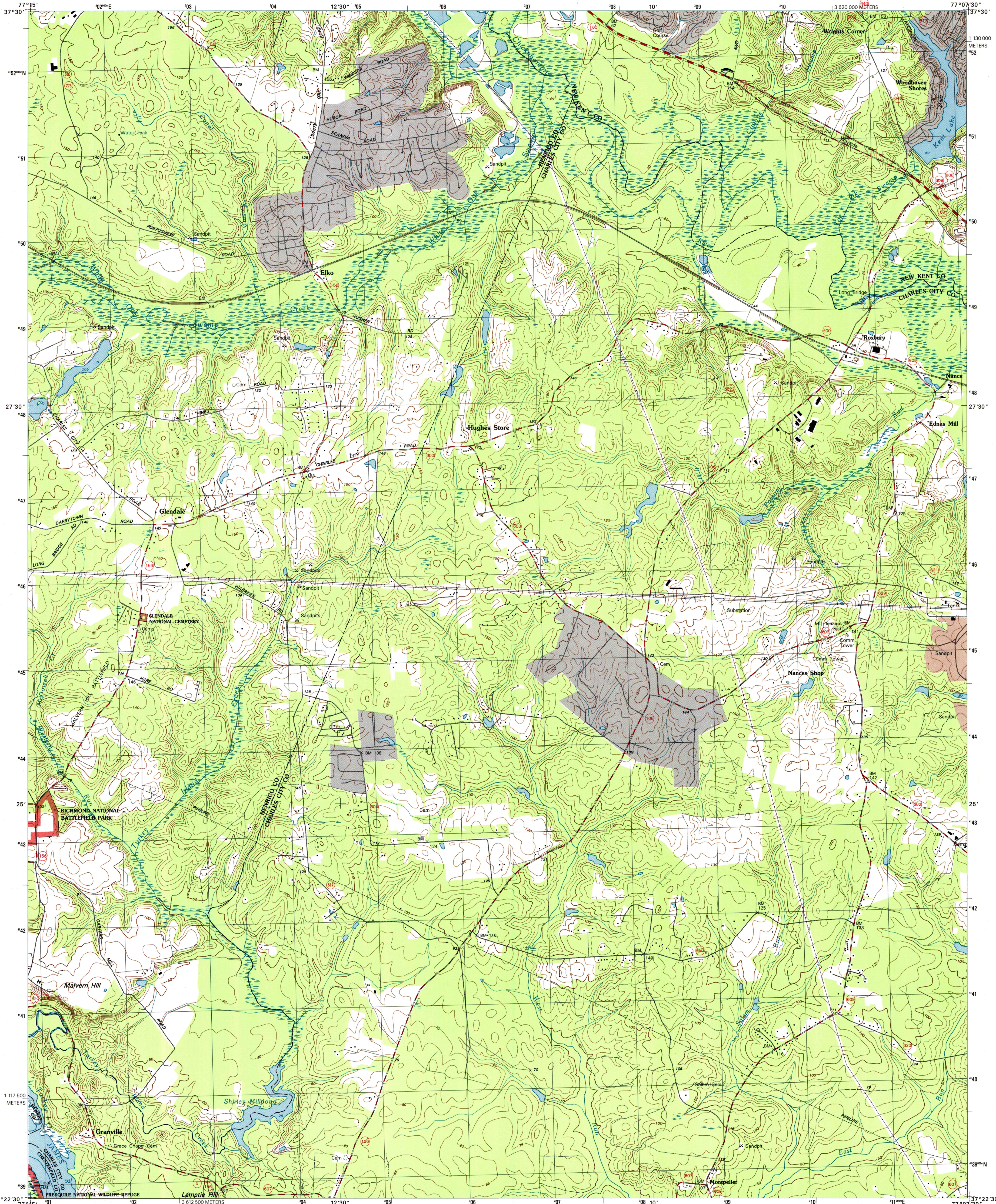




U.S. DEPARTMENT OF THE INTERIOR
U.S. GEOLOGICAL SURVEY

ROXBURY QUADRANGLE
VIRGINIA
7.5-MINUTE SERIES (TOPOGRAPHIC)

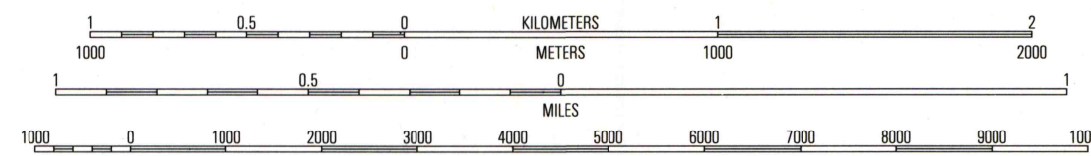
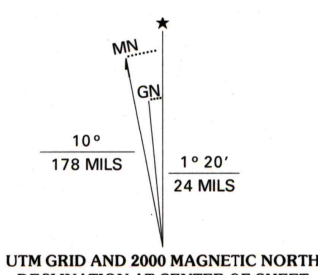


Produced by the United States Geological Survey
Derived from imagery taken 1994 and other sources. Photosinspected using imagery taken 1999; no major culture or drainage changes observed. Survey control current as of 1965. Boundaries, other than corporate, verified 2000.

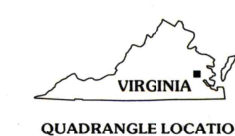
North American Datum of 1983 (NAD 83). Projection and 1000-meter grid. Universal Transverse Mercator, zone 18. 2 500-meter ticks: Virginia Coordinate System of 1983 (south zone).

North American Datum of 1927 (NAD 27) is shown by dashed corner ticks. The values of the shift between NAD 83 and NAD 27 for 7.5-minute intersections are obtainable from National Geodetic Survey NADCON software.

There may be private inholdings within the boundaries of the National or State reservations shown on this map.



CONTOUR INTERVAL 10 FEET
SUPPLEMENTARY CONTOUR INTERVAL 5 FEET
NATIONAL GEODETIC VERTICAL DATUM OF 1929
TO CONVERT FROM FEET TO METERS, MULTIPLY BY 0.3048



ROAD CLASSIFICATION

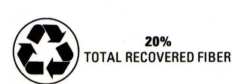
- Primary highway hard surface
- Light-duty road, hard or improved surface
- Secondary highway hard surface
- Unimproved road

Interstate Route U.S. Route State Route

1	2	3	1 Seven Pines
			2 Quinton
			3 Tunstall
4			4 Dutch Gap
			5 Providence Forge
			6 Hopewell
			7 Westover
6	7	8	8 Charles City

ADJOINING 7.5' QUADRANGLE NAMES

THIS MAP COMPLIES WITH NATIONAL MAP ACCURACY STANDARDS
FOR SALE BY U.S. GEOLOGICAL SURVEY, P.O. BOX 25286, DENVER, COLORADO 80225
AND VIRGINIA DIVISION OF MINERAL RESOURCES, CHARLOTTESVILLE, VIRGINIA 22903
A FOLDER DESCRIBING TOPOGRAPHIC MAPS AND SYMBOLS IS AVAILABLE ON REQUEST



ROXBURY, VA
1999

NIMA 5558 1 NW-SERIES V834

