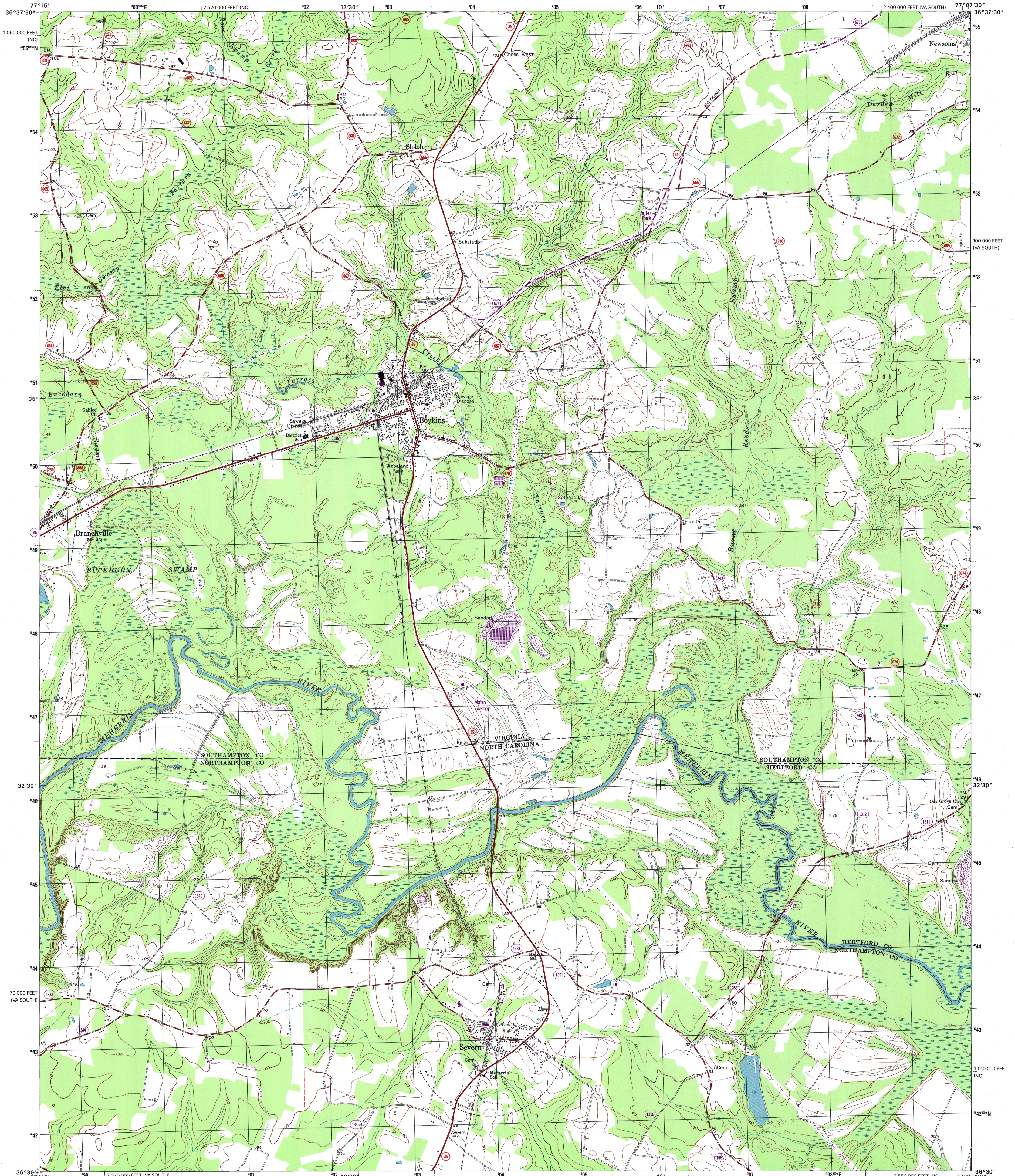


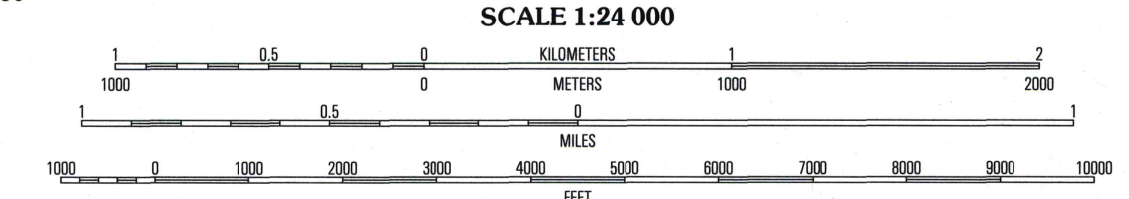
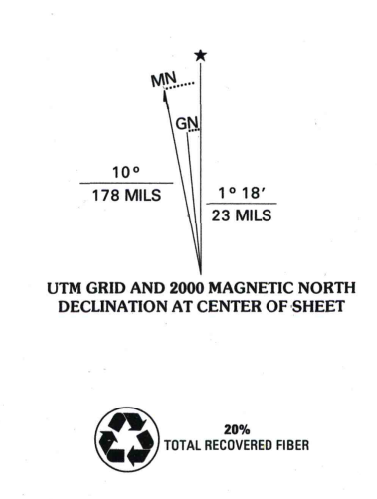


U.S. DEPARTMENT OF THE INTERIOR  
U.S. GEOLOGICAL SURVEY

BOYKINS QUADRANGLE  
VIRGINIA-NORTH CAROLINA  
7.5-MINUTE SERIES (TOPOGRAPHIC)

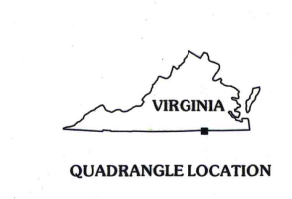


Produced by the United States Geological Survey  
Topography compiled 1962. Planimetry derived from imagery taken 1978 and other sources. Photoinspected using imagery dated 1997; no major culture or drainage changes observed. Survey control current as of 1966. Boundaries, other than corporate, verified 2000  
North American Datum of 1927 (NAD 27)  
Projection: Virginia coordinate system, south zone (Lambert conformal conic)  
10 000-foot ticks: Virginia coordinate system, south zone and North Carolina coordinate system  
1000-meter Universal Transverse Mercator grid, zone 18  
North American Datum of 1983 (NAD 83) is shown by dashed corner ticks. The values of the shift between NAD 27 and NAD 83 for 7.5-minute intersections are obtainable from National Geodetic Survey NADCON software  
Information shown in purple may not meet USGS content standards and may conflict with previously mapped contours



CONTOUR INTERVAL 10 FEET  
SUPPLEMENTARY CONTOUR INTERVAL 5 FEET  
NATIONAL GEODETIC VERTICAL DATUM OF 1929  
TO CONVERT FROM FEET TO METERS, MULTIPLY BY 0.3048

THIS MAP COMPLIES WITH NATIONAL MAP ACCURACY STANDARDS  
FOR SALE BY U.S. GEOLOGICAL SURVEY, P. O. BOX 25286, DENVER, COLORADO 80225  
AND VIRGINIA DIVISION OF MINERAL RESOURCES, CHARLOTTEVILLE, VIRGINIA 22903  
A FOLDER DESCRIBING TOPOGRAPHIC MAPS AND SYMBOLS IS AVAILABLE ON REQUEST



ROAD CLASSIFICATION

Primary highway	Light-duty road, hard or hard surface
Secondary highway	Improved surface
Unimproved road	Unimproved road

● Interstate Route   
 ○ U.S. Route   
 ○ State Route

ADJOINING 7.5' QUADRANGLE NAMES

1	2	3	1 Drewryville
4	5	6	2 Capron
7	8	9	3 Courtland
			4 Margarettsville
			5 Sunbeam
			6 Gabala
			7 Conway
			8 Murfreesboro

BOYKINS, VA-NC  
1997  
NIMA 5557 II SW-SERIES V834

