

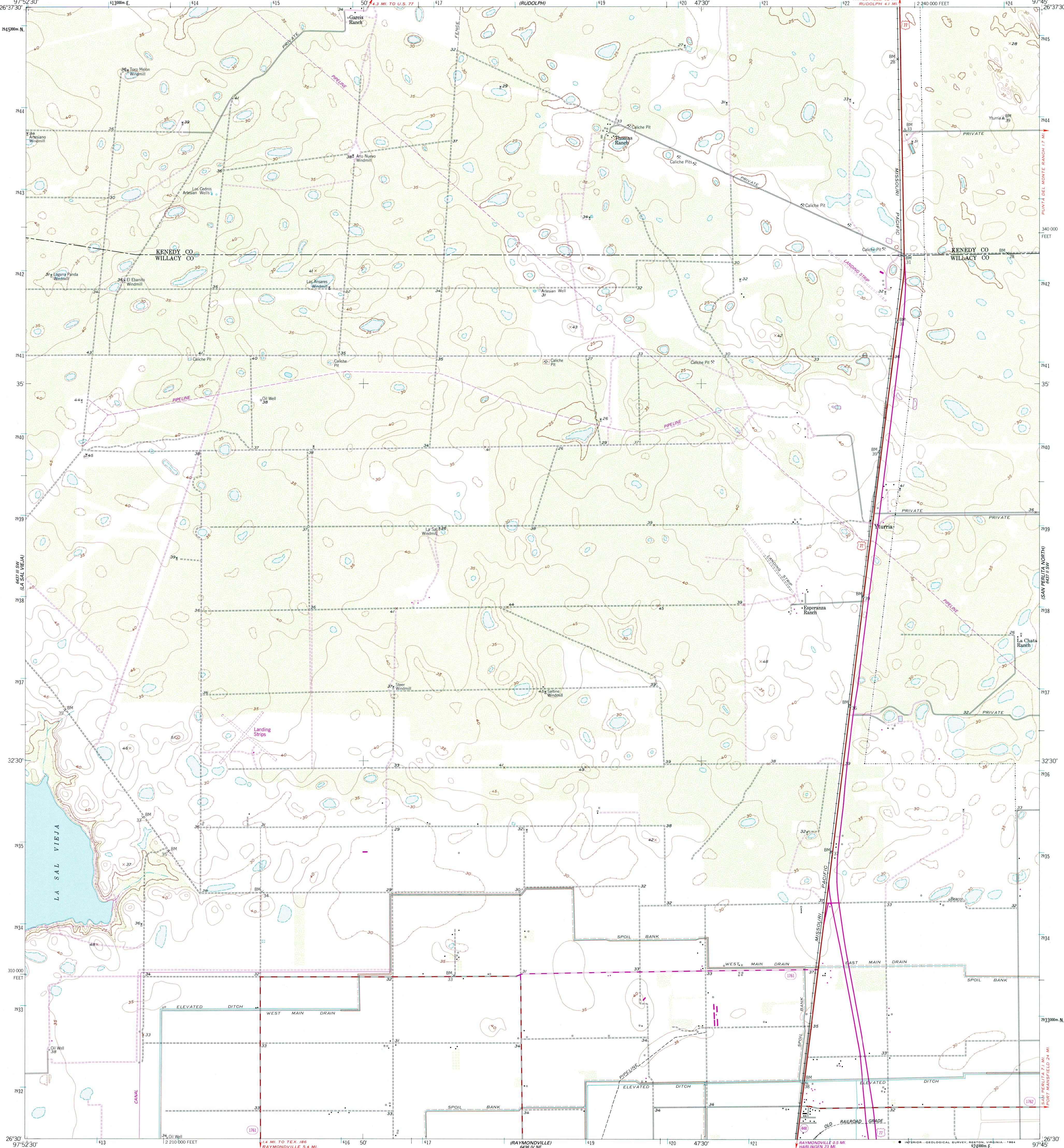
LA SALLE RANCH  
6.5 MI. W

UNITED STATES  
DEPARTMENT OF THE INTERIOR  
GEOLOGICAL SURVEY

YTURRIA QUADRANGLE  
TEXAS

7.5 MINUTE SERIES (TOPOGRAPHIC)  
SE/4 LA SAL VIEJA IS QUADRANGLE

ROBERTA RANCH  
6.5 MI. E

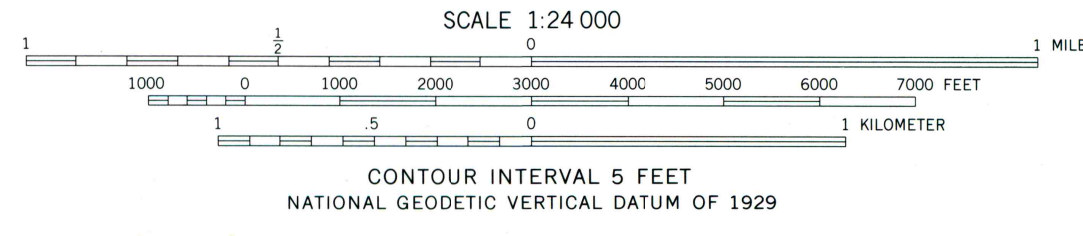
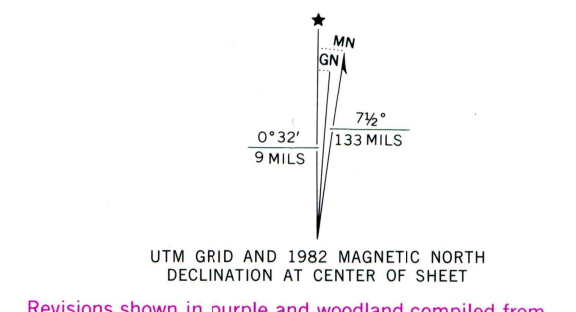


Mapped, edited, and published by the Geological Survey  
Control by USGS and NOS/NOAA

Culture and drainage in part compiled from aerial photographs  
taken 1953. Topography by planetable surveys 1956

Polycyclic projection. 1927 North American datum  
10,000-foot grid based on Texas coordinate system,  
south zone  
1000-meter Universal Transverse Mercator grid ticks,  
zone 14, shown in blue

To place on the predicted North American Datum 1983  
move the projection lines 32 meters south and  
28 meters east as shown by dashed corner ticks



QUADRANGLE LOCATION

ROAD CLASSIFICATION

Heavy-duty	Light-duty
Medium-duty	Unimproved dirt
U.S. Route	State Route

Revisions shown in purple and woodland compiled from  
aerial photographs taken 1980 and other source data  
This information not field checked. Map edited 1982

THIS MAP COMPLIES WITH NATIONAL MAP ACCURACY STANDARDS  
FOR SALE BY U. S. GEOLOGICAL SURVEY, DENVER, COLORADO 80225, OR RESTON, VIRGINIA 22092  
A FOLDER DESCRIBING TOPOGRAPHIC MAPS AND SYMBOLS IS AVAILABLE ON REQUEST

2697-321

YTURRIA, TEX.  
SE/4 LA SAL VIEJA IS QUADRANGLE  
N2630-W9745/7.5

1956  
PHOTOREVISED 1982  
DMA 6437 III SE-SERIES V882