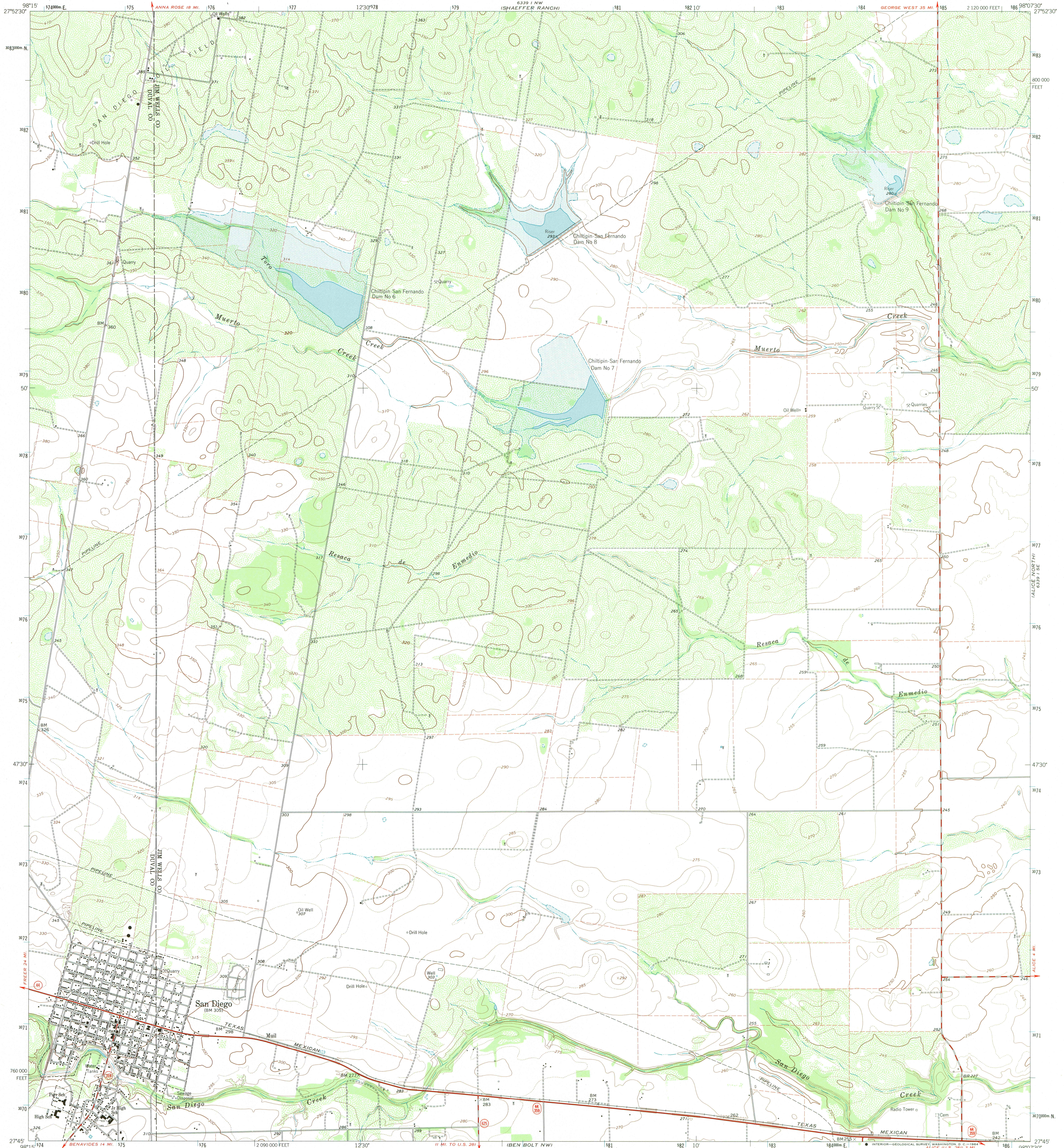
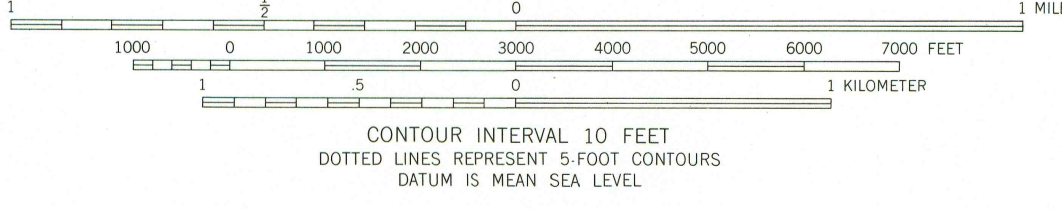
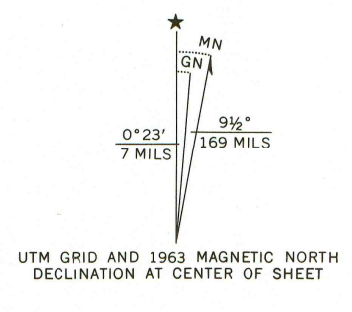


6339 1 NE
6339 1 SE
6339 1 SW
6339 1 NW



Mapped, edited, and published by the Geological Survey

Control by USGS and USC&GS
Topography by photogrammetric methods from aerial photographs taken 1961-1962. Field checked 1963
Polyconic projection. 1927 North American datum. 10,000-foot grid based on Texas coordinate system, south zone. 1000-meter Universal Transverse Mercator grid ticks, zone 14, shown in blue.
Fine red dashed lines indicate selected fence lines.
Areas covered by dashed light-blue pattern are subject to controlled inundation.



THIS MAP COMPLIES WITH NATIONAL MAP ACCURACY STANDARDS
FOR SALE BY U.S. GEOLOGICAL SURVEY
DENVER, COLORADO 80225, OR RESTON, VIRGINIA 22092
A FOLDER DESCRIBING TOPOGRAPHIC MAPS AND SYMBOLS IS AVAILABLE ON REQUEST



ROAD CLASSIFICATION

Heavy-duty	Light-duty
Medium-duty	Unimproved dirt
Slate Route	

SAN DIEGO, TEX.
N2745-W9807.5/7.5

1963

AMS 6339 1 SW-SERIES V882

ALICE NORTH
6339 1 SE

ALICE SOUTH
6339 1 SE