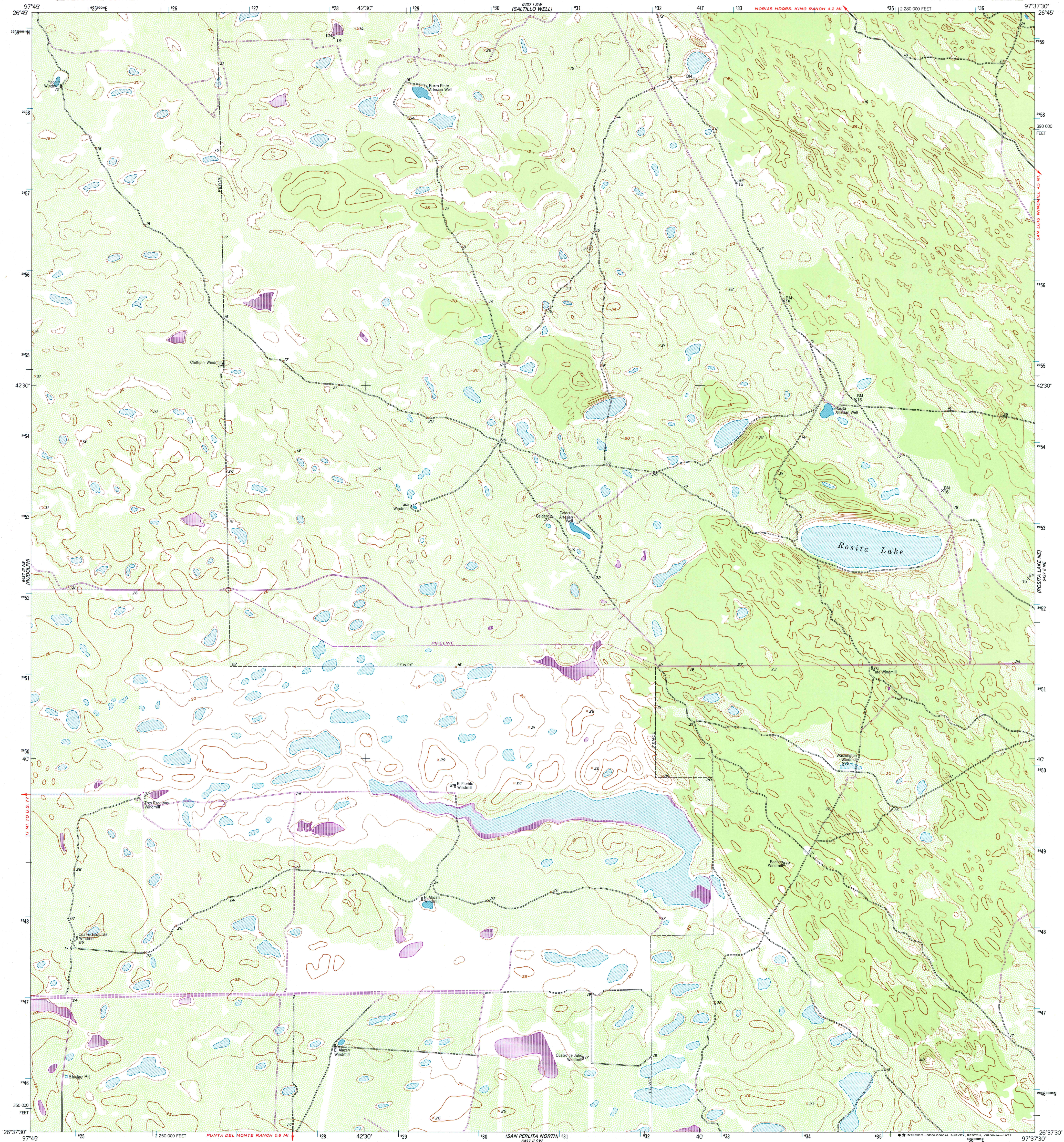


6437 II SW (SALTILLO WELL)

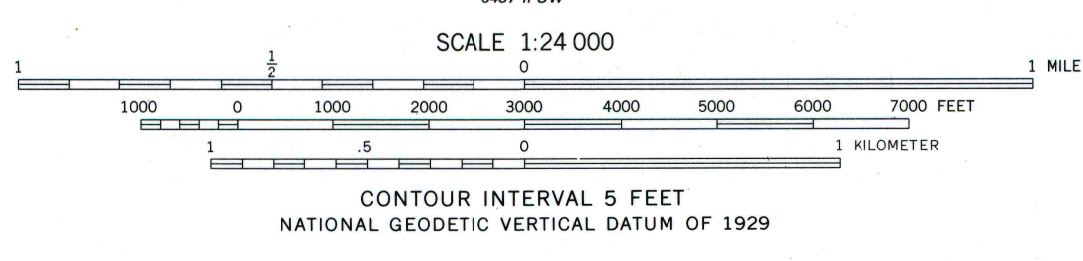
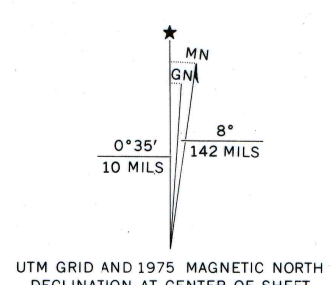
UNITED STATES
DEPARTMENT OF THE INTERIOR
GEOLOGICAL SURVEY

ROSITA LAKE QUADRANGLE
TEXAS-KENEDY CO.
7.5 MINUTE SERIES (TOPOGRAPHIC)
NW 1/4 ROSITA LAKE 15 QUADRANGLE

6437 II SE (LOS AMIGOS WINDMILL)



Mapped, edited, and published by the Geological Survey
Control by USGS and NOS/NOAA
Culture and drainage in part compiled from aerial photographs
taken 1953. Topography by planetable surveys 1956
Polyconic projection. 1927 North American datum
10,000-foot grid based on Texas coordinate system,
south zone
1000-meter Universal Transverse Mercator grid ticks,
zone 14, shown in blue
Revisions shown in purple compiled from aerial photographs
taken 1975. This information not field checked



ROAD CLASSIFICATION
Light-duty ————— Unimproved dirt - - - - -

ROSITA LAKE, TEX.
NW 1/4 ROSITA LAKE 15 QUADRANGLE
N2637.5—W9737.5/7.5

THIS MAP COMPLIES WITH NATIONAL MAP ACCURACY STANDARDS
FOR SALE BY U. S. GEOLOGICAL SURVEY, DENVER, COLORADO 80225, OR RESTON VIRGINIA 22092
A FOLDER DESCRIBING TOPOGRAPHIC MAPS AND SYMBOLS IS AVAILABLE ON REQUEST

2697-313

1956
PHOTOREVISED 1975
AMS 6437 II NW—SERIES V882