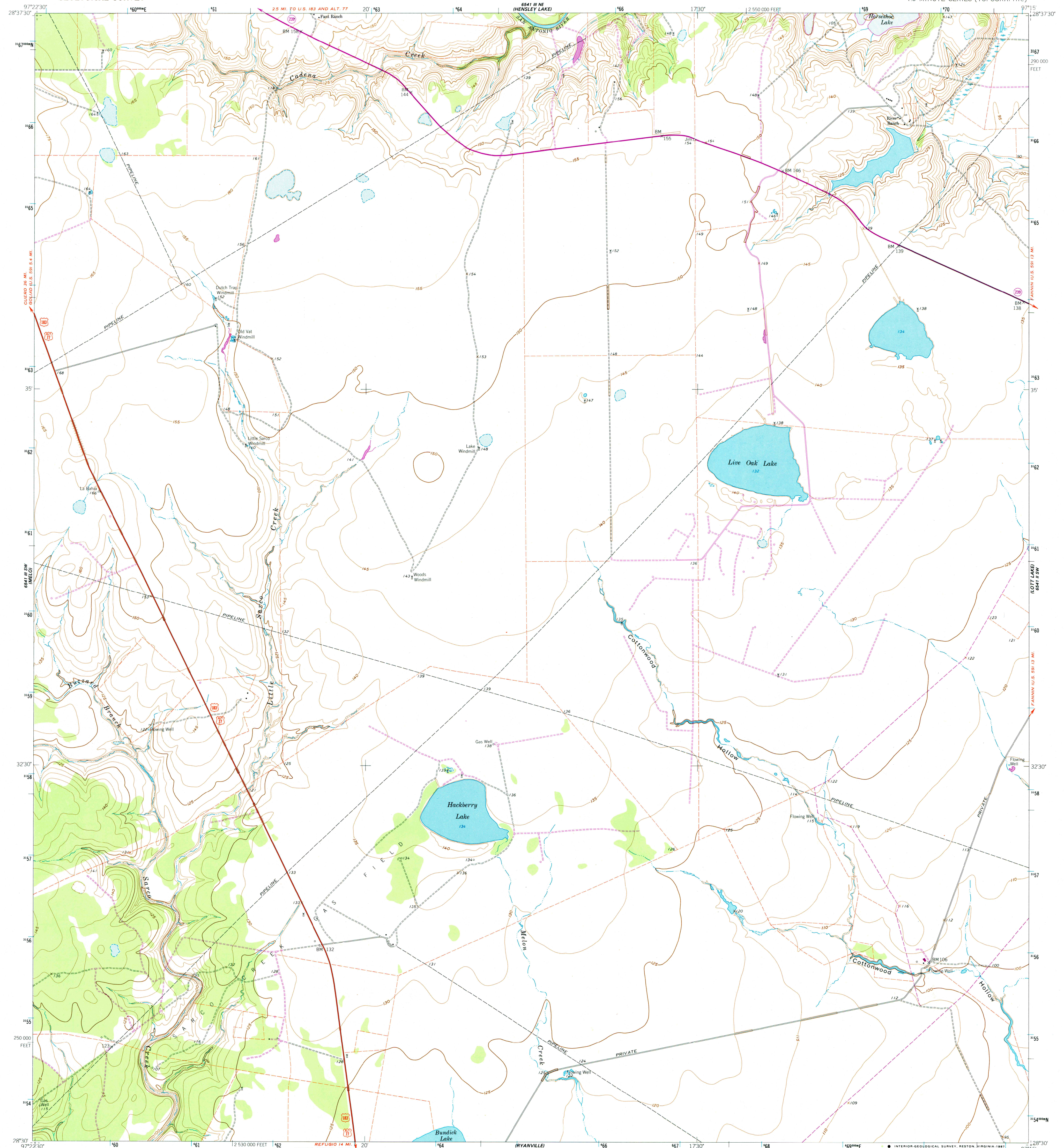


6641 NW
6641 NW

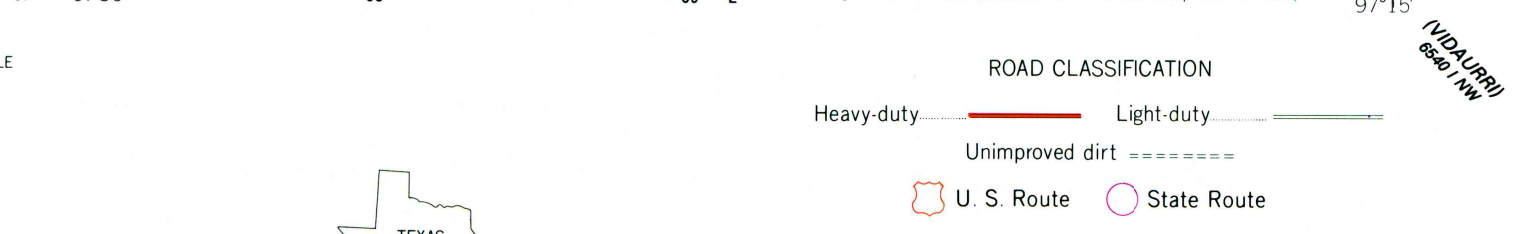
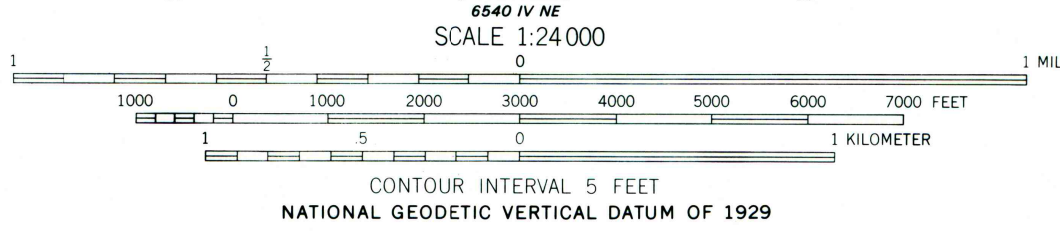
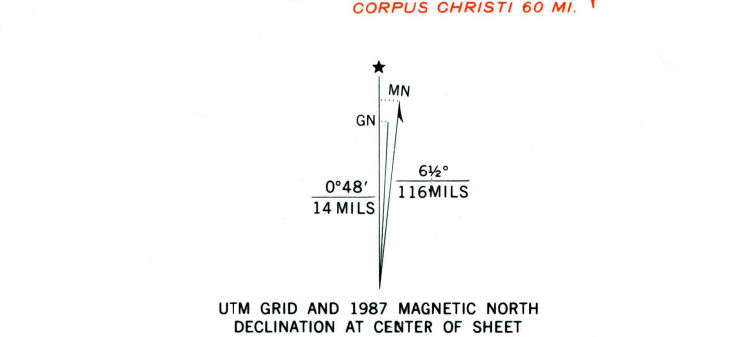
UNITED STATES
DEPARTMENT OF THE INTERIOR
GEOLOGICAL SURVEY

LIVE OAK LAKE QUADRANGLE
TEXAS-GOLIAD CO.
7.5 MINUTE SERIES (TOPOGRAPHIC)

6641 NW
6641 NW



Mapped, edited, and published by the Geological Survey
Control by USGS and NOS/NOAA
Planimetry by photogrammetric methods from aerial photographs taken 1959. Topography by planetable surveys 1962.
Polyconic projection: 1927 North American Datum
10,000-foot grid based on Texas coordinate system, south central zone
1000-meter Universal Transverse Mercator grid ticks, zone 14, shown in blue
Fine red dashed lines indicate selected fence lines
To place on the predicted North American Datum 1983 move the projection lines 24 meters south and 26 meters east as shown by dashed corner ticks
Revisions shown in purple and woodland compiled from aerial photographs taken 1981 and other source data
This information not field checked. Map edited 1987



QUADRANGLE LOCATION
2897-421

THIS MAP COMPLIES WITH NATIONAL MAP ACCURACY STANDARDS
FOR SALE BY U.S. GEOLOGICAL SURVEY
DENVER, COLORADO 80225, OR RESTON, VIRGINIA 22092
A FOLDER DESCRIBING TOPOGRAPHIC MAPS AND SYMBOLS IS AVAILABLE ON REQUEST

LIVE OAK LAKE, TEX.
28097-E3-TF-024
1962
PHOTOREVISED 1987
DMA 6541 III SE-SERIES V82