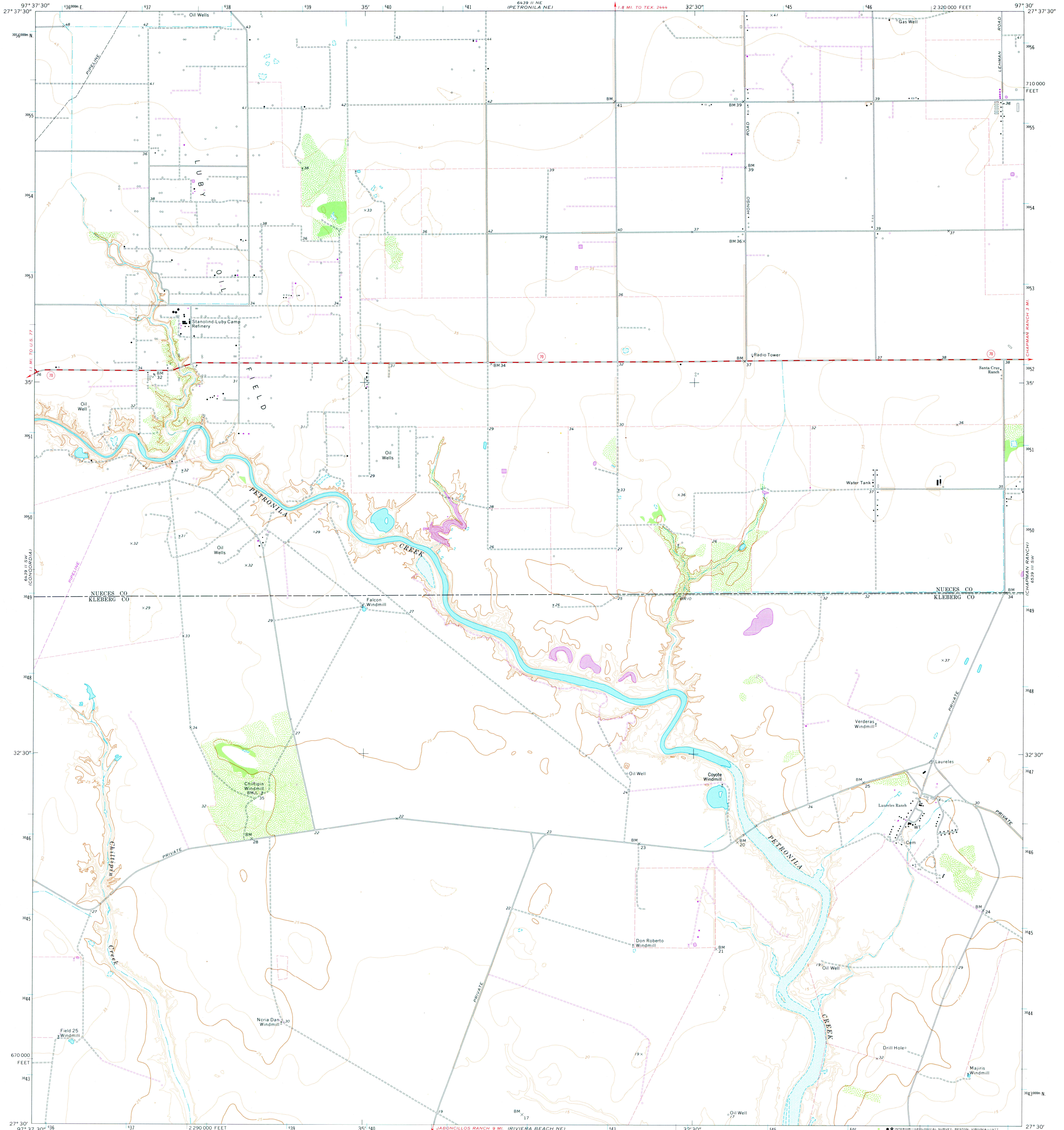


6439 II NW
(ORISCOLL EAST)

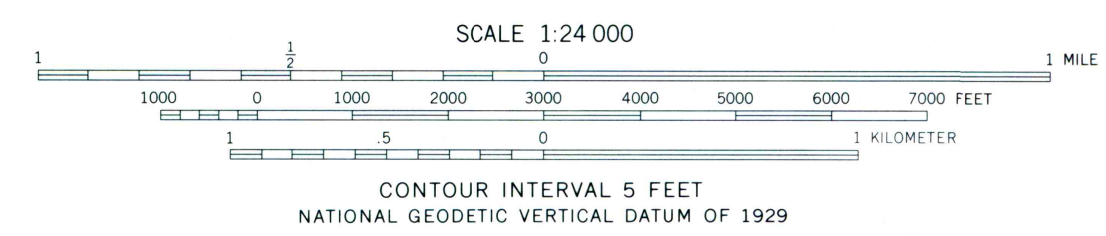
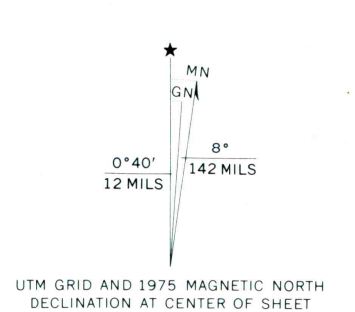
UNITED STATES
DEPARTMENT OF THE INTERIOR
GEOLOGICAL SURVEY

LAURELES RANCH QUADRANGLE
TEXAS
7.5 MINUTE SERIES (TOPOGRAPHIC)
SE/4 PETRONILA 15' QUADRANGLE

6439 II NW
(SOUTH BIRD ISLAND NW)
6439 II SW
(CHAPMAN RANCH NW)



Mapped, edited, and published by the Geological Survey
Control by USGS and NOS/NOAA
Topography by photogrammetric methods from aerial photographs taken 1968. Field checked 1969
Polyconic projection. 1927 North American datum
10,000-foot grid based on Texas coordinate system, south zone
1000-meter Universal Transverse Mercator grid ticks, zone 14, shown in blue
Fine red dashed lines indicate selected fence lines
Water stages in this area vary with meteorological conditions
Approximate limits of occasional inundation shown by dashed blue lines
Revisions shown in purple compiled from aerial photographs taken 1975. This information not field checked



ROAD CLASSIFICATION
Secondary highway, all weather. Light-duty road, all weather, hard surface. Improved surface
Unimproved road, fair or dry weather
State Route

THIS MAP COMPLIES WITH NATIONAL MAP ACCURACY STANDARDS
FOR SALE BY U. S. GEOLOGICAL SURVEY, DENVER, COLORADO 80225, OR RESTON, VIRGINIA 22092
A FOLDER DESCRIBING TOPOGRAPHIC MAPS AND SYMBOLS IS AVAILABLE ON REQUEST

LAURELES RANCH, TEX.
SE/4 PETRONILA 15' QUADRANGLE
N2730-W9730/7.5
1969
PHOTOREVISED 1975
AMS 6439 II SE-SERIES V882

6439 II NW
(RIVIERA BEACH NW)

6439 II NW
(SOUTH BIRD ISLAND NW)