

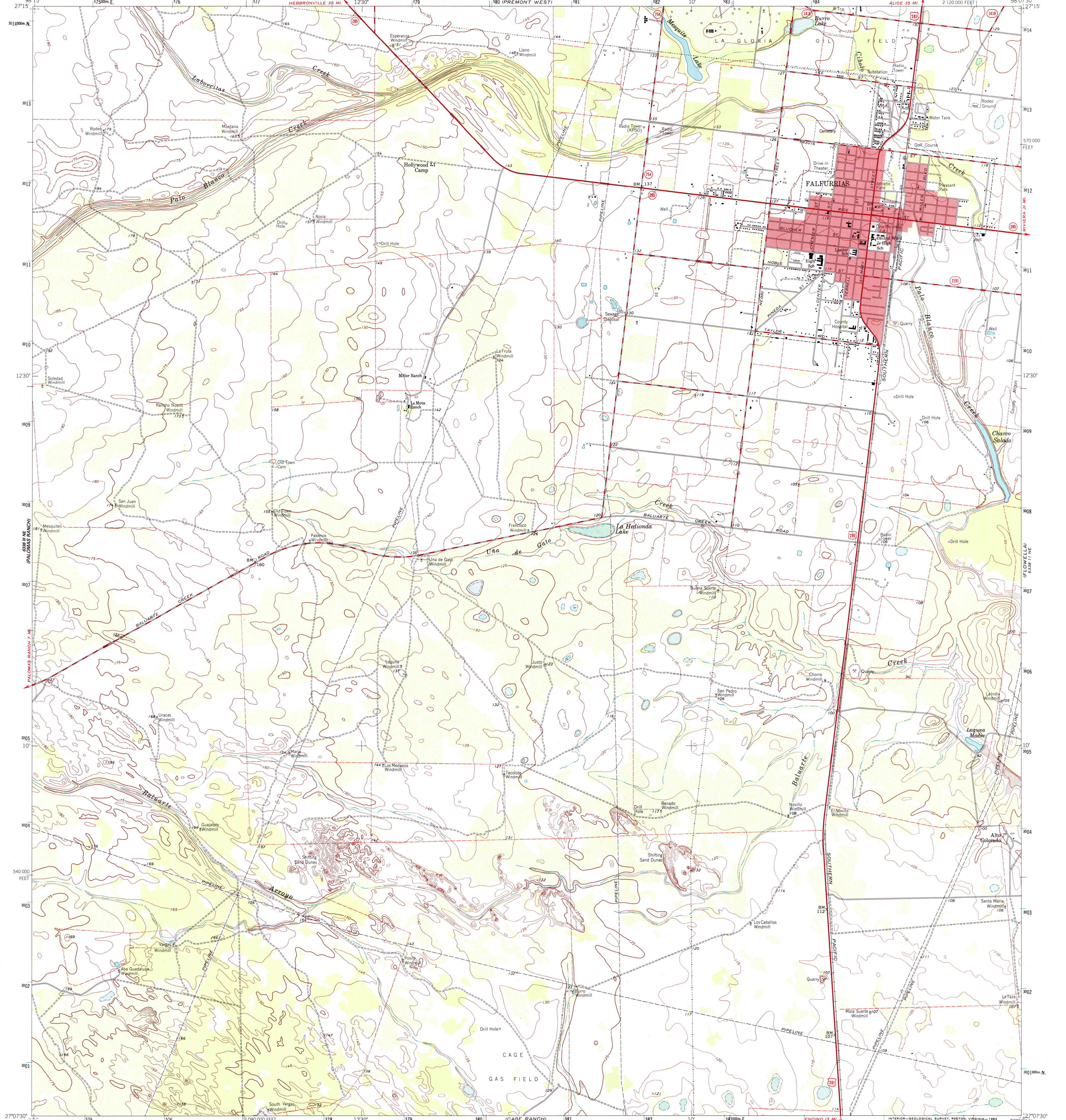
50% RECYCLED PAPER



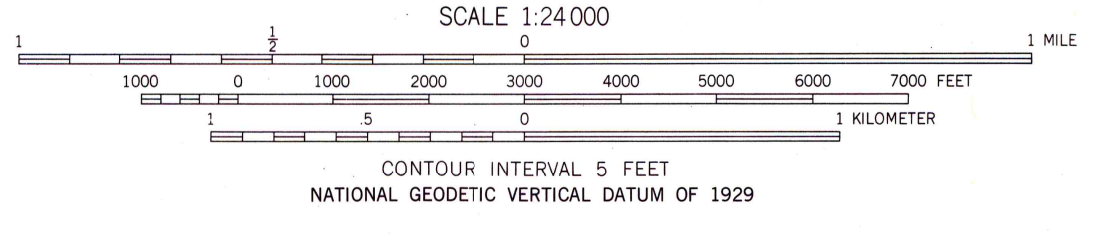
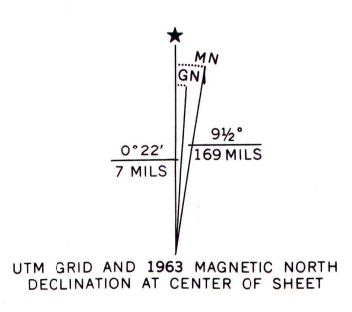
U.S. DEPARTMENT OF THE INTERIOR
U.S. GEOLOGICAL SURVEY

FALFURRIAS QUADRANGLE
TEXAS—BROOKS CO.
7.5 MINUTE SERIES (TOPOGRAPHIC)

6338 II NW-SERIES V882
(PREVIOUS EDITION)



Mapped, edited, and published by the Geological Survey
Control by USGS and USC&GS
Topography by photogrammetric methods from aerial photographs taken 1961 and planetable surveys 1963
Polyconic projection, 1927 North American Datum
10,000-foot grid based on Texas coordinate system, south zone
1000-meter Universal Transverse Mercator grid ticks, zone 14, shown in blue
Red tint indicates area in which only landmark buildings are shown
Fine red dashed lines indicate selected fence lines
To place on the predicted North American Datum 1983
move the projection lines 29 meters south and
29 meters east as shown by dashed corner ticks



QUADRANGLE LOCATION
2798-113

ROAD CLASSIFICATION	
Heavy-duty	Light-duty
Medium-duty	Unimproved dirt
U.S. Route	State Route

THIS MAP COMPLIES WITH NATIONAL MAP ACCURACY STANDARDS
FOR SALE BY U.S. GEOLOGICAL SURVEY, P.O. BOX 252896, DENVER, COLORADO 80225
A FOLDER DESCRIBING TOPOGRAPHIC MAPS AND SYMBOLS IS AVAILABLE ON REQUEST

FALFURRIAS, TEX.
27098-82-TF-024
1963
DMA 6338 II NW-SERIES V882

