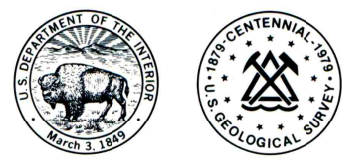
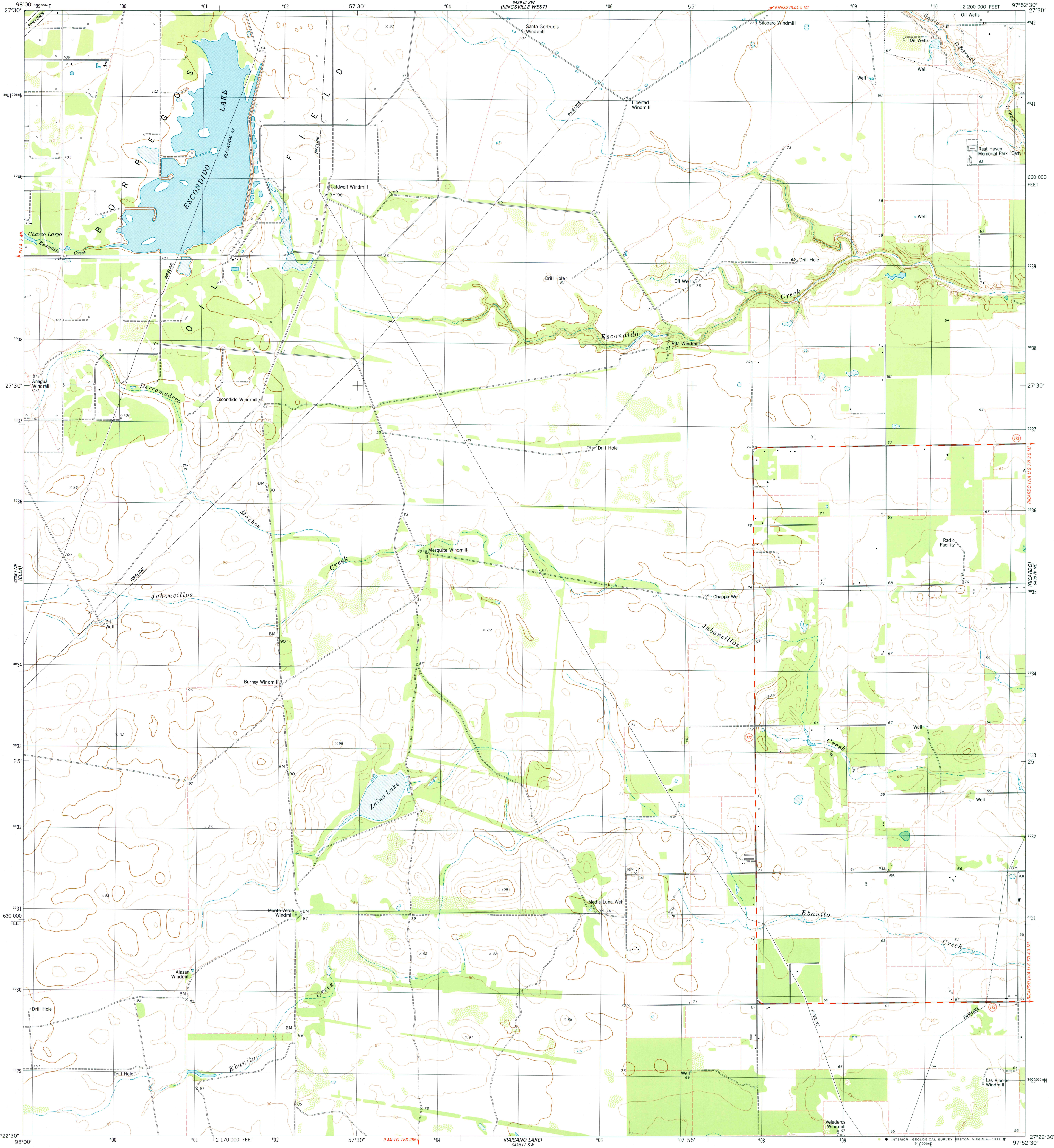


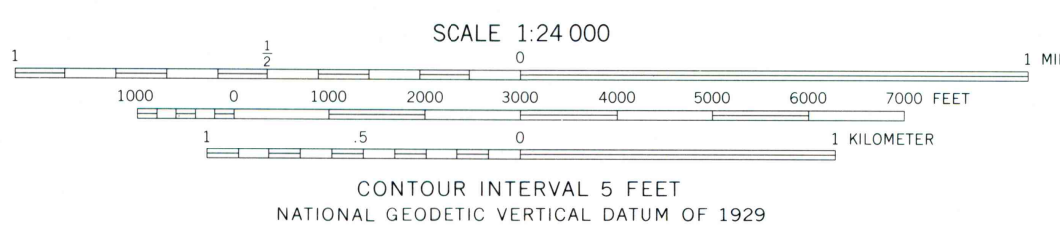
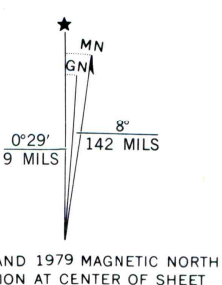
1987 10 15  
1987 10 15



1987 10 15  
1987 10 15



Mapped, edited, and published by the Geological Survey  
Control by USGS and NOS/NOAA  
Topography by photogrammetric methods from aerial photographs taken 1974. Field checked 1975. Map edited 1979  
Projection and 10,000-foot grid ticks: Texas coordinate system, south zone (Lambert conformal conic) 1000-meter Universal Transverse Mercator grid, zone 14 1927 North American datum  
Fine red dashed lines indicate selected fence lines



ROAD CLASSIFICATION

Primary highway, hard surface	Light-duty road, hard or improved surface
Secondary highway, hard surface	Unimproved road
Interstate Route	U. S. Route
	State Route

THIS MAP COMPLIES WITH NATIONAL MAP ACCURACY STANDARDS  
FOR SALE BY U. S. GEOLOGICAL SURVEY, DENVER, COLORADO 80225, OR RESTON, VIRGINIA 22092  
A FOLDER DESCRIBING TOPOGRAPHIC MAPS AND SYMBOLS IS AVAILABLE ON REQUEST

QUADRANGLE LOCATION  
2797-233

ESCONDIDO LAKE, TEX.  
NW/4 RIVIERA 15' QUADRANGLE  
N2722.5-W9752.5/7.5

1979

DMA 6438 IV NW—SERIES V882