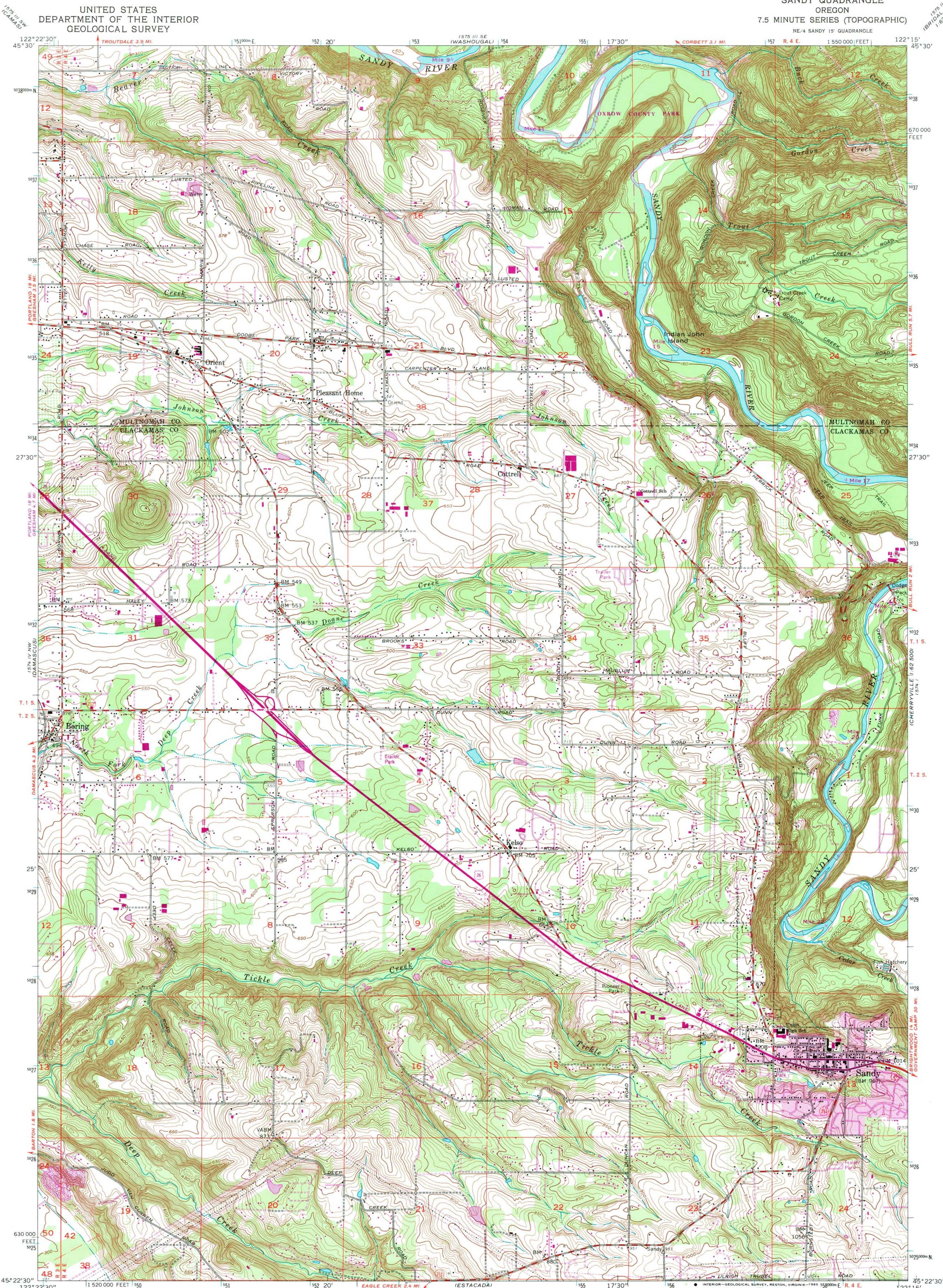


UNITED STATES
DEPARTMENT OF THE INTERIOR
GEOLOGICAL SURVEY

SANDY QUADRANGLE
OREGON
7.5 MINUTE SERIES (TOPOGRAPHIC)



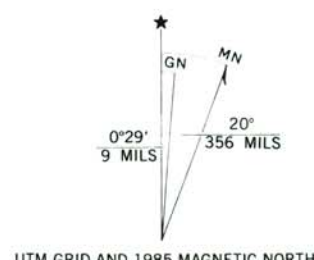
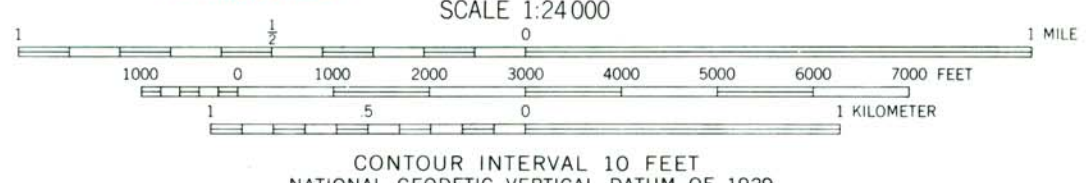
Mapped, edited, and published by the Geological Survey
Control by USGS, NOS/NOAA, and State of Oregon

Topography from aerial photographs by photogrammetric methods
Aerial photographs taken 1952. Field check 1954
Revised from aerial photographs taken 1960. Field check 1961

Polyconic projection. 1927 North American datum
10,000-foot grid based on Oregon coordinate system, north zone
1000-meter Universal Transverse Mercator grid ticks,
zone 10, shown in blue

To place on the predicted North American Datum 1983
move the projection lines 22 meters north and
93 meters east as shown by dashed corner ticks

Revisions shown in purple compiled from aerial
photographs taken 1981 and other sources
This information not field checked. Map edited 1985
Purple tint indicates extensions of urban areas



ROAD CLASSIFICATION

Heavy-duty	Light-duty
Medium-duty	Unimproved dirt
U.S. Route	State Route

SANDY, OREG.
NE/4 SANDY 15' QUADRANGLE
45122-D3-TF-024
1961
PHOTOREVISED 1985
DMA 1574 IV NE-SERIES V892

THIS MAP COMPLIES WITH NATIONAL MAP ACCURACY STANDARDS
FOR SALE BY U. S. GEOLOGICAL SURVEY, DENVER, COLORADO 80225, OR RESTON, VIRGINIA 22092
A FOLDER DESCRIBING TOPOGRAPHIC MAPS AND SYMBOLS IS AVAILABLE ON REQUEST