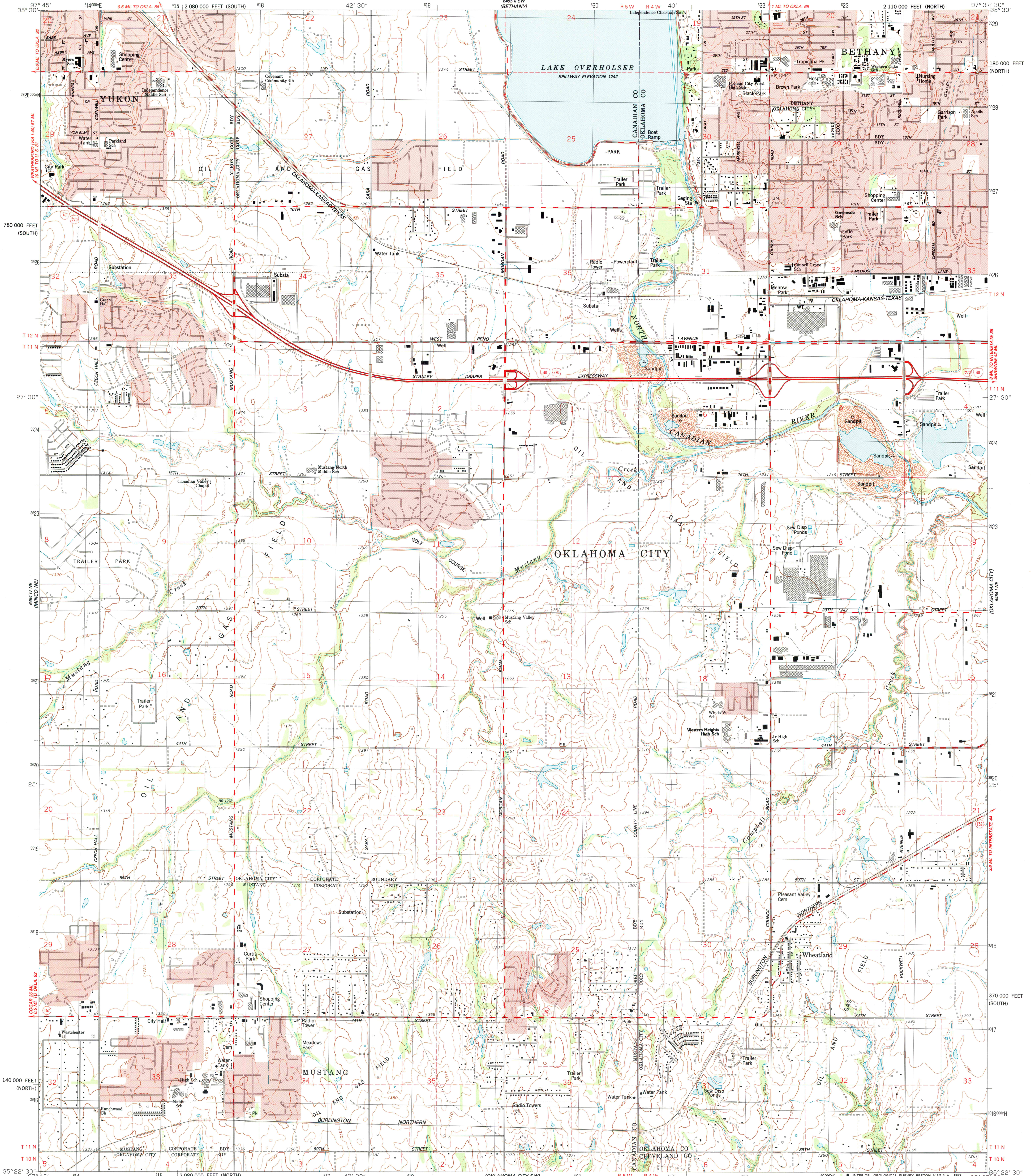
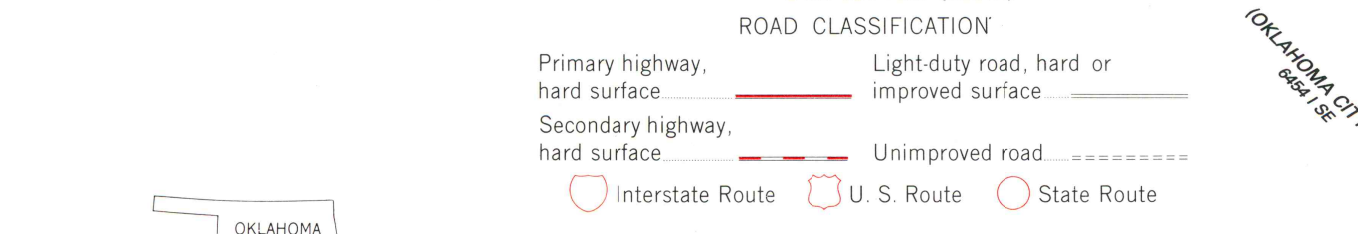
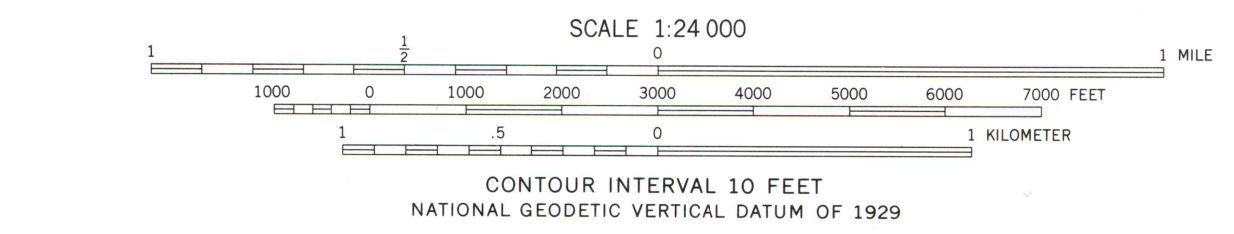
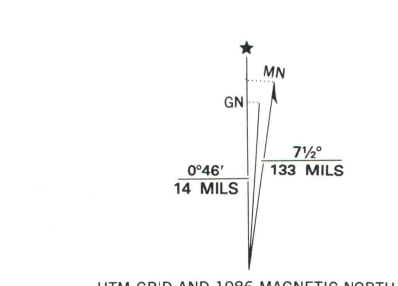


UNITED STATES
DEPARTMENT OF THE INTERIOR
GEOLOGICAL SURVEY

MUSTANG QUADRANGLE
OKLAHOMA
7.5 MINUTE SERIES (TOPOGRAPHIC)
NW4 OKLAHOMA CITY 15' QUADRANGLE



Mapped, edited, and published by the Geological Survey Control by USGS, NOS/NOAA, and Oklahoma State Highway Department Topography by photogrammetric methods from aerial photographs taken 1964. Field checked 1966. Revised from aerial photographs taken 1984. Field checked 1985. Map edited 1986
Projection: Oklahoma coordinate system, north zone (Lambert conformal conic)
10,000-foot grid ticks based on Oklahoma coordinate system, north and south zones
1000-meter Universal Transverse Mercator grid, zone 14 1927 North American Datum
To place on the predicted North American Datum 1983, move the projection lines 3 meters south and 29 meters east as shown by dashed corner ticks
Red tint indicates areas in which only landmark buildings are shown
Fine red dashed lines indicate selected fence and field lines where generally visible on aerial photographs. This information is unchecked



THIS MAP COMPLIES WITH NATIONAL MAP ACCURACY STANDARDS
FOR SALE BY U. S. GEOLOGICAL SURVEY, DENVER, COLORADO 80225, OR RESTON, VIRGINIA 22092
AND OKLAHOMA GEOLOGICAL SURVEY, NORMAN, OKLAHOMA 73069
A FOLDER DESCRIBING TOPOGRAPHIC MAPS AND SYMBOLS IS AVAILABLE ON REQUEST

MUSTANG, OKLA.
NW4 OKLAHOMA CITY 15' QUADRANGLE
35097-D6-TF-024

1986
DMA 6454 I NW-SERIES V885