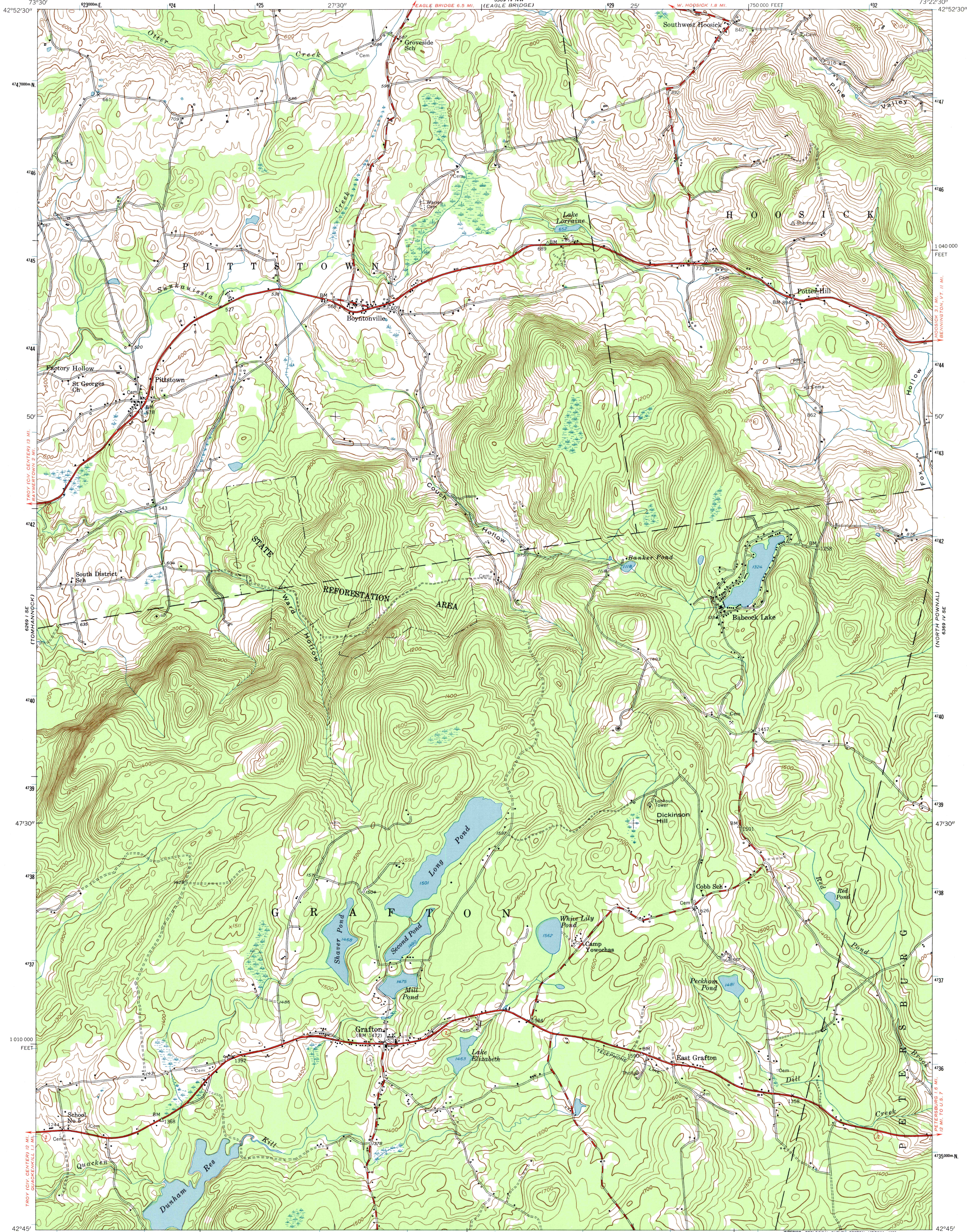
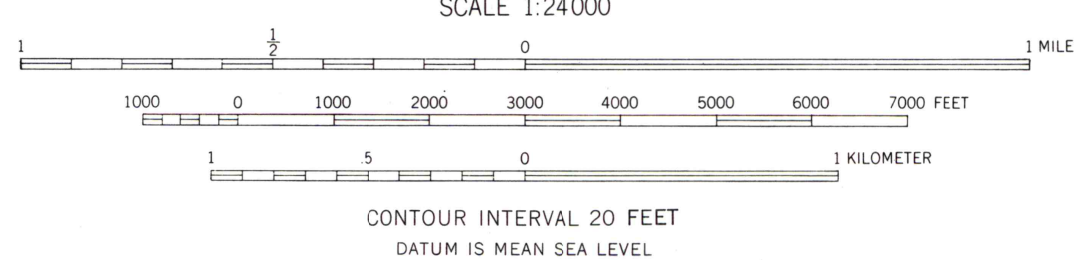
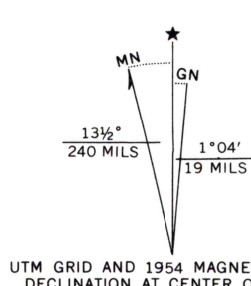


6889 1/4 NE  
(SCALE)  
(CORNER)

6889 1/4 NE  
(HOOSICK FALLS)



Mapped, edited, and published by the Geological Survey  
Control by USGS and USC&GS  
Topography from aerial photographs by multiplex methods  
Aerial photographs taken 1942. Field check 1943  
Revised by planetable surveys 1954  
Polyconic projection. 1927 North American datum  
10,000-foot grid based on New York coordinate system,  
east zone  
1000-meter Universal Transverse Mercator grid ticks,  
zone 18, shown in blue  
Unchecked elevations are shown in brown  
Map photinspected 1978  
No major culture or drainage changes observed



ROAD CLASSIFICATION

Heavy duty	Light duty
Medium-duty	Unimproved dirt
U. S. Route	State Route

GRAFTON, N. Y.  
N 4245—W 7322.5/7.5  
PHOTINSPECTED 1978  
1954

THIS MAP COMPLIES WITH NATIONAL MAP ACCURACY STANDARDS  
FOR SALE BY U.S. GEOLOGICAL SURVEY, RESTON, VIRGINIA 22092  
A FOLDER DESCRIBING TOPOGRAPHIC MAPS AND SYMBOLS IS AVAILABLE ON REQUEST

AMS 6369 IV SW—SERIES V821

